

# HY-BRID LIFTS™

BY CUSTOM EQUIPMENT LLC

## PARTS MANUAL

PUSH-AROUND AERIAL WORK PLATFORM

SUPO-730

REV B



---

**HB-P827**  
**HB-P1027**  
**HB-P4.5**  
**HB-P5.0**

---

SERIES I

Model HB-P827 Serial # Ranges:

D05-30001-39999

Model HB-P1027 Serial # Ranges:

D11-30001-39999

Model HB-P4.5 Serial # Ranges:

E05-35001-39999

Model HB-P5.0 Serial # Ranges:

E11-35001-39999



# TABLE OF CONTENTS

NOTES.....	2
FOREWORD.....	3
TABLE OF CONTENTS.....	4
INDEX OF FIGURES.....	5
<b>SECTION 1   BASE.....</b>	<b>6</b>
1.1   CASTER PARTS.....	6
1.2   CASTER SUBPARTS.....	7
1.3   BRAKE SUBPARTS.....	7
1.4   PUMP PARTS.....	8
1.5   PUMP SUBPARTS.....	10
1.6   MISC PARTS.....	12
<b>SECTION 2   CONTROLS.....</b>	<b>14</b>
2.1   ELECTRICAL PARTS.....	14
2.2   UPPER CONTROL PARTS.....	16
2.3   ENABLE SWITCH SUBPARTS.....	17
2.4   E-STOP SWITCH SUBPARTS.....	17
2.5   MASTER POWER SWITCH SUBPARTS.....	18
2.6   UP/DOWN SWITCH SUBPARTS.....	18
<b>SECTION 3   SCISSORS.....</b>	<b>20</b>
3.1   SCISSORS PARTS.....	20
3.2   CYLINDER SUBPARTS.....	22
<b>SECTION 4   PLATFORM &amp; RAILS.....</b>	<b>24</b>
<b>SECTION 5   DECALS.....</b>	<b>26</b>
5.1   DECALS-ANSI/CSA.....	26
5.2   DECALS-CE.....	28
<b>SECTION 6   OPTIONS &amp; MISCELLANEOUS.....</b>	<b>30</b>

# INDEX OF FIGURES

FIGURE 1: Caster Parts.....	6
FIGURE 2: Caster Subparts.....	7
FIGURE 3: Brake Subparts.....	7
FIGURE 4: Pump Parts.....	8
FIGURE 5: Pump Subparts.....	10
FIGURE 6: Misc Parts.....	12
FIGURE 7: Electrical Parts.....	14
FIGURE 8: Upper Control Parts.....	16
FIGURE 9: Enable Switch Subparts.....	17
FIGURE 10: Brake Subparts.....	17
FIGURE 11: Master Power Switch Subparts.....	18
FIGURE 12: Up/Down Switch Subparts.....	18
FIGURE 13: Scissors Parts.....	20
FIGURE 14: Cylinder Subparts.....	22
FIGURE 15: Platform & Rails.....	24
FIGURE 16: Decals.....	26
FIGURE 17: Decals-CE.....	28
FIGURE 18: Options & Misc.....	30

## 1.1 | CASTER PARTS

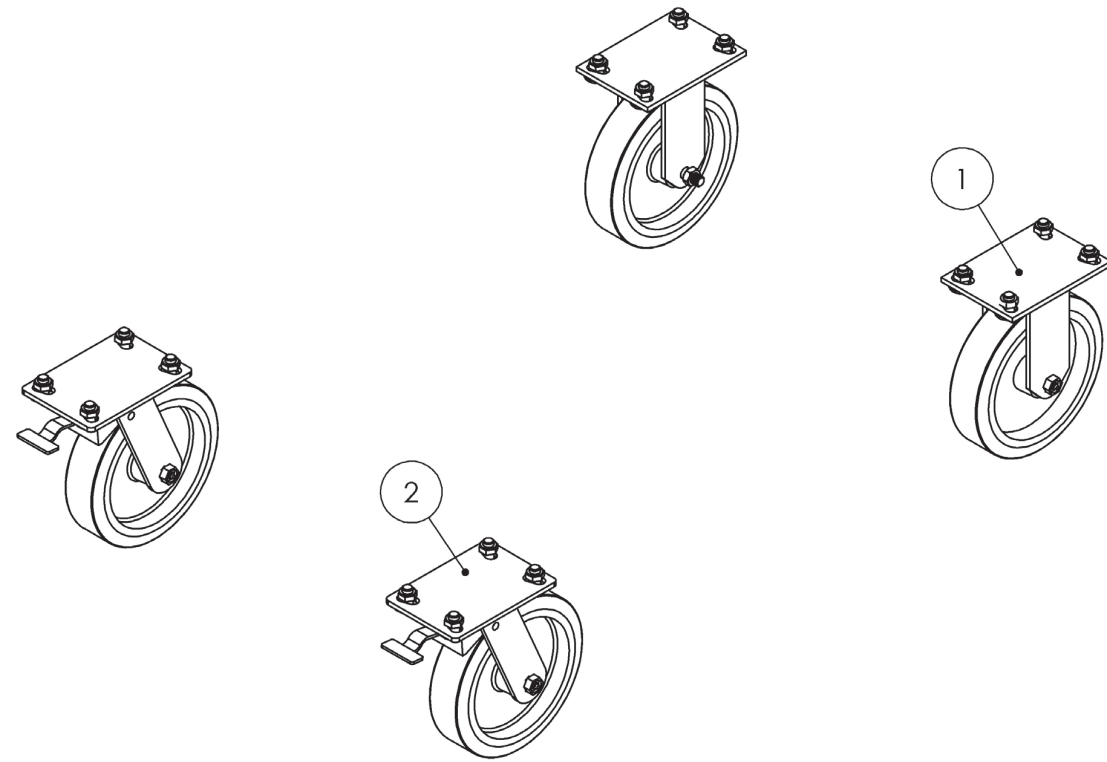


FIGURE 1: Caster Parts

Item #	Part Number	Part Description	Notes	Qty	Superseded By
1	1002103160-KIT	ASM,BASE CASTER,RIGID	Superseded	0	144-21-031-50-K
1	144-21-031-50-K	ASM,BASE CASTER,RIGID		2	
2	1002103161-KIT	ASM,BASE CASTER,SWIVEL	Superseded	0	WHEE-713-5-KIT
2	144-21-030-50-K	ASM,BASE CASTER,SWIVEL		2	
2	WHEE-713-5-KIT	WHL,8X2 GREY,W/FORK TOTAL LOCK	144-21-030-50-K may be substituted	2	

## 1.2 | CASTER SUBPARTS

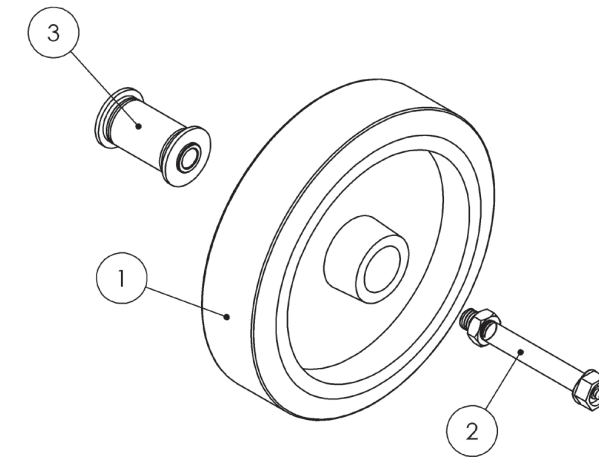


FIGURE 2: Caster Subparts

Item #	Part Number	Part Description	Notes	Qty	Superseded By
1	WHEE-706	WHL,8X2,GREY NM BORE 1.25		1	
2	WHEE-002-2	WHL,AXLE KIT 0.5X3.25		1	
3	WHEE-002-1	WHL,BEARING KIT,0.5 X 2.0 AXLE		1	

## 1.3 | BRAKE SUBPARTS

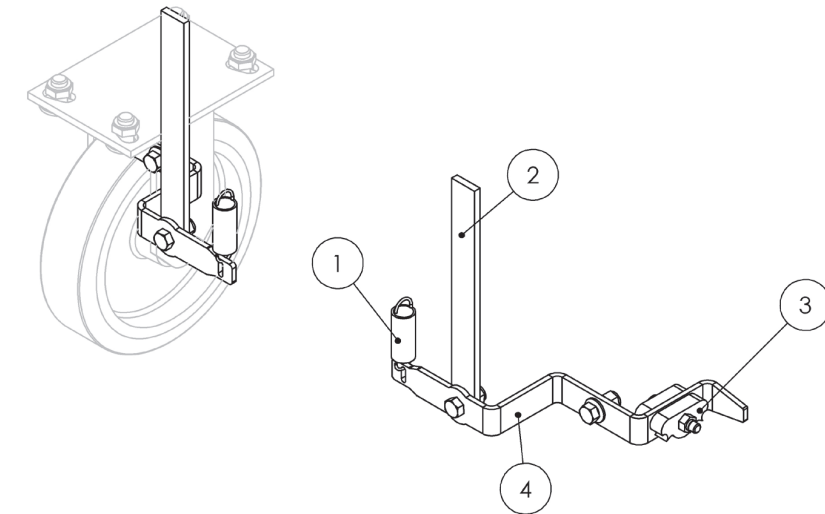


FIGURE 3: Brake Subparts

Item #	Part Number	Part Description	Notes	Qty	Superseded By
1	HARD-690	SPRING,EXT 2.69 X .75,OD		2	
2	1000131402	BASE,BRAKE ACTUATOR		2	
3	143-01-028-02	BASE,BRAKE CAM		4	
4	144-01-014-02	BASE,BRAKE		2	

1.4 | PUMP PARTS

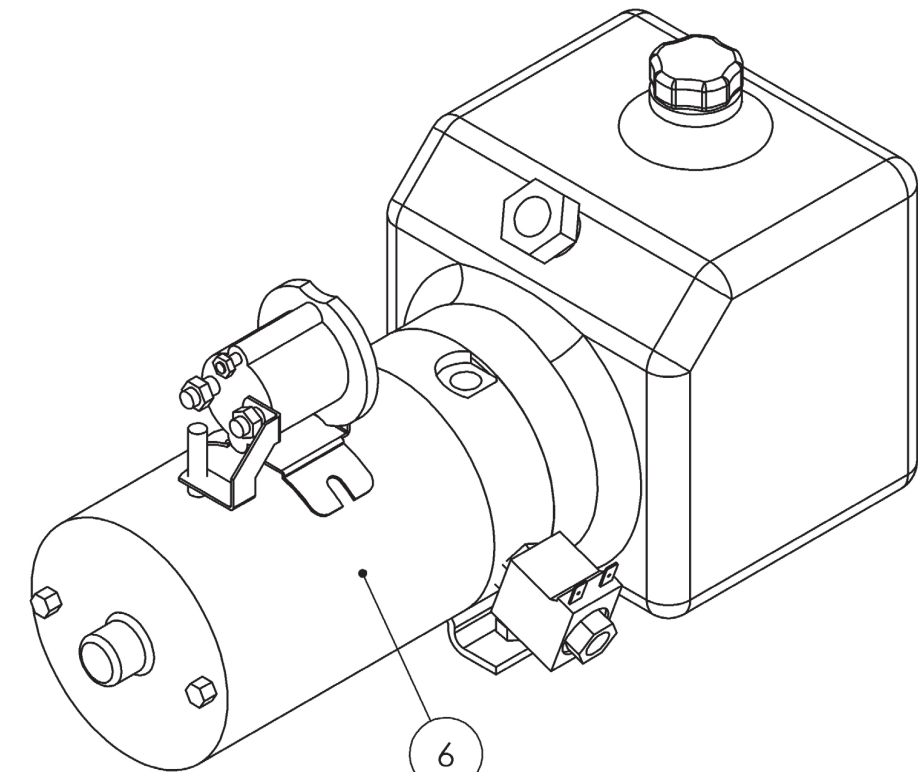
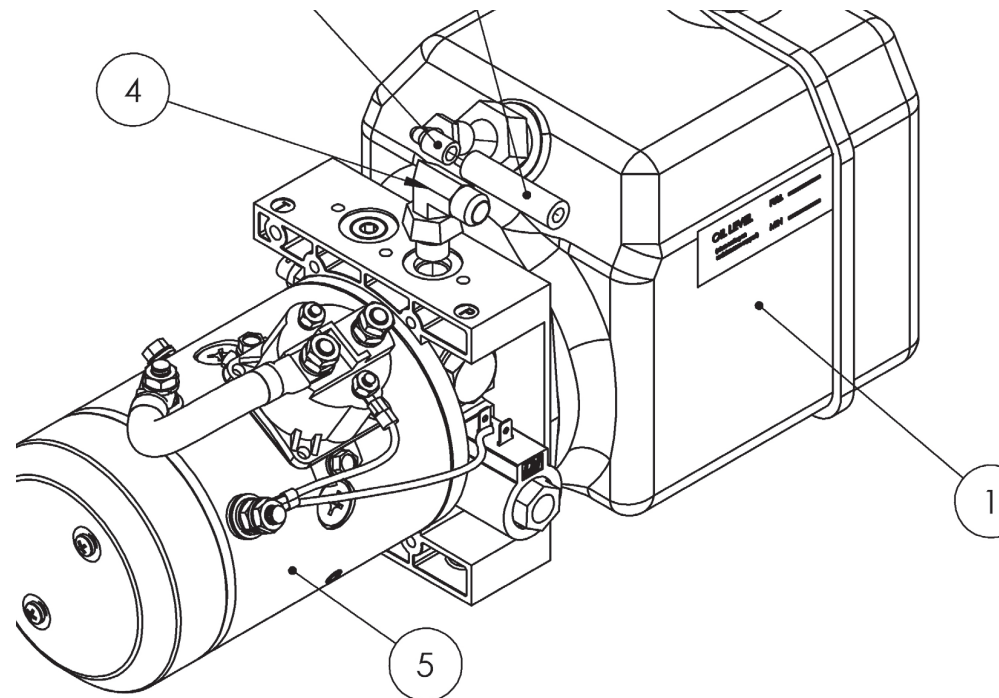


FIGURE 4: Pump Parts

Item #	Part Number	Part Description	Notes	Qty	Superseded By
1	HYDR-032	HYDRAULIC OIL	Not available as a replacement part. Replace with Flomite #150, Dexron II, Mobil-DTE 2 or equivalent 32 weight implement oil.	0	
2	HYDR-022-3	LOW PRESSURE HOSE	Qty in inches	93	
3	HYDR-019	FITTING,ELB,NPTM 3/8-1/4 PUSH		1	
4	HYDR-677	FITNG,ELB,JICM 9/16-SAEORM #6		1	
5	HYDR-050-14	PUMP,12VDC,0.078	Entire Pump, KTI	1	
6	HYDR-050-7	PUMP,12VDC,0.073,0.68,NA	Entire Pump, BUCHER; HYDR-050-14 may be substituted	1	

1.5 | PUMP SUBPARTS

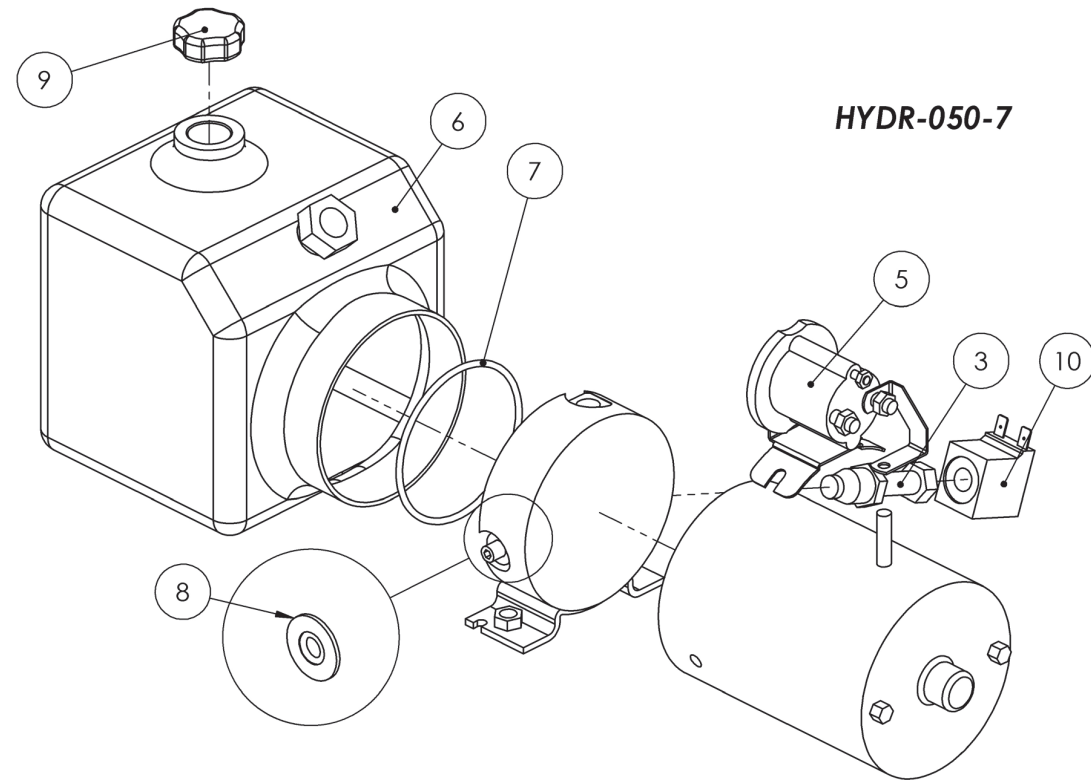
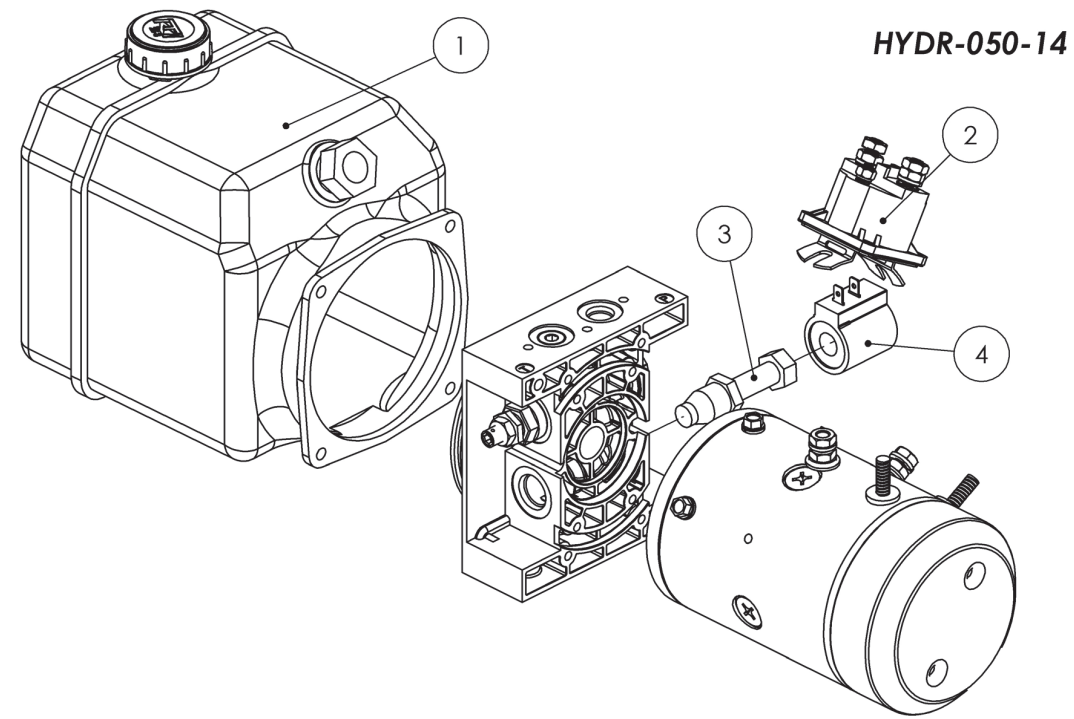
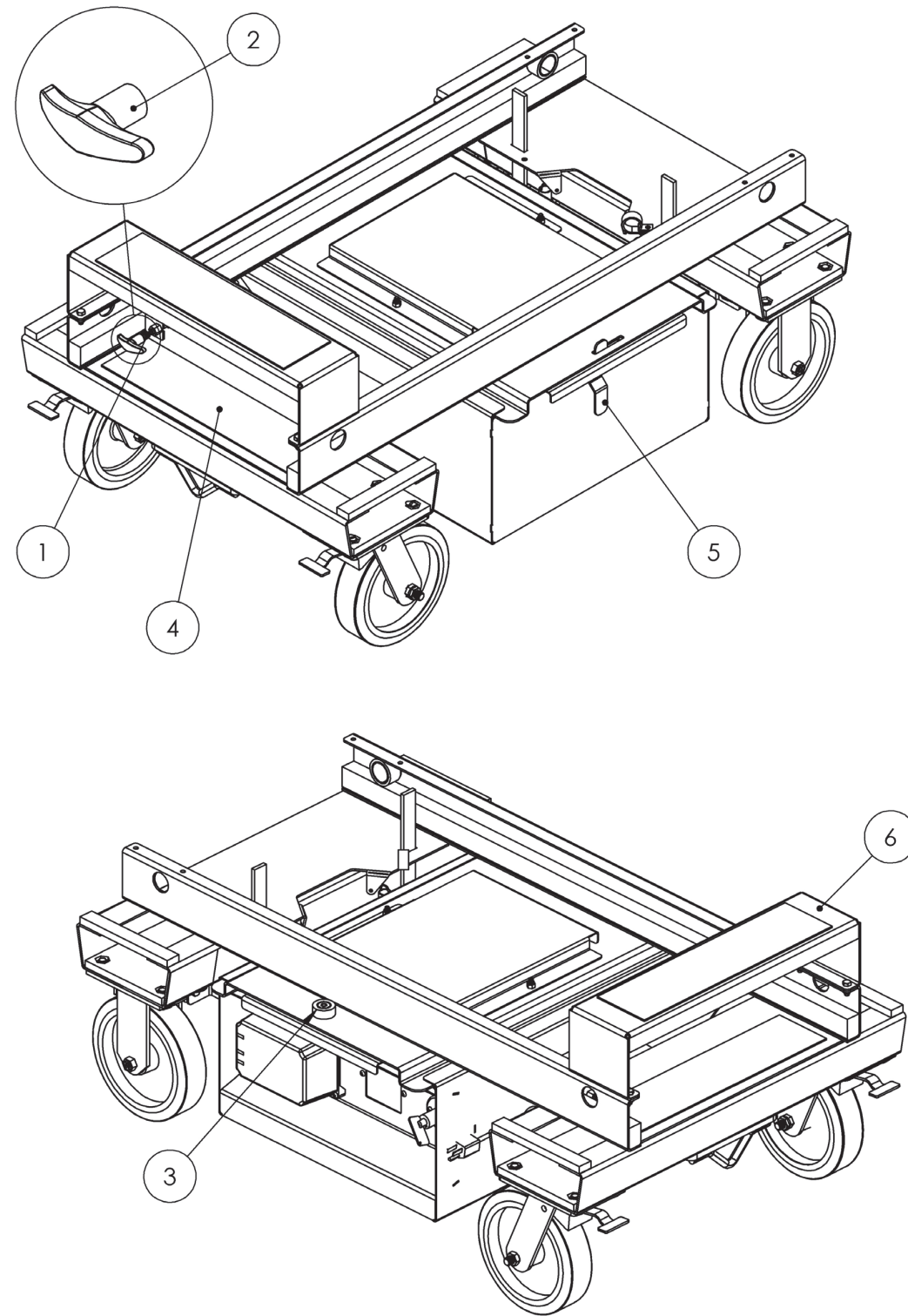


FIGURE 5: Pump Subparts

Item #	Part Number	Part Description	Notes	Qty	Superseded By
1	HYDR-116	PUMP RESERVOIR, 3 QT.	KTI Pump	1	
2	HYDR-691	SOLENOID,12V,100 AMP	KTI Pump	1	
3	HYDR-665	VALVE,NO,2W/2P,#8,UP		1	
4	HYDR-694	COIL,10V	KTI Pump	1	
5	HYDR-674	SOLENOID,12V,GROUNDED,SPST	Bucher Pump	1	
6	HYDR-067-1	PUMP RESERVOIR	Bucher Pump	1	
7	HYDR-068	PUMP RESERVOIR O-RING	Bucher Pump	1	
8	HYDR-667	WASH,0.38 ID,0.75 OD,PRES SEAL	Bucher Pump	1	
9	HYDR-042	PUMP RESERVOIR CAP	Bucher Pump	1	
10	HYDR-673	COIL,10V	Bucher Pump	1	

1.6 | BASE MISC PARTS



Item #	Part Number	Part Description	Notes	Qty	Superseded By
1	HARD-644-06	86/96 LOW FRICTION CABLE		1	
2	HARD-644-07	0.16 HANDLE,RED T		1	
3	HARD-086	LEVEL,BUBBLE		1	
4	MISC-031-06-KIT	ANTI-SLIP TAPE,4.00,16.00 LENG		2	
5	1000132101	BASE,CABINET LATCH		1	
6	144-01-020-01	BASE,STEP 5.0	Used on HB-P5.0 & HB-P1027	1	

FIGURE 6: Misc Parts

## 2.1 | ELECTRICAL PARTS

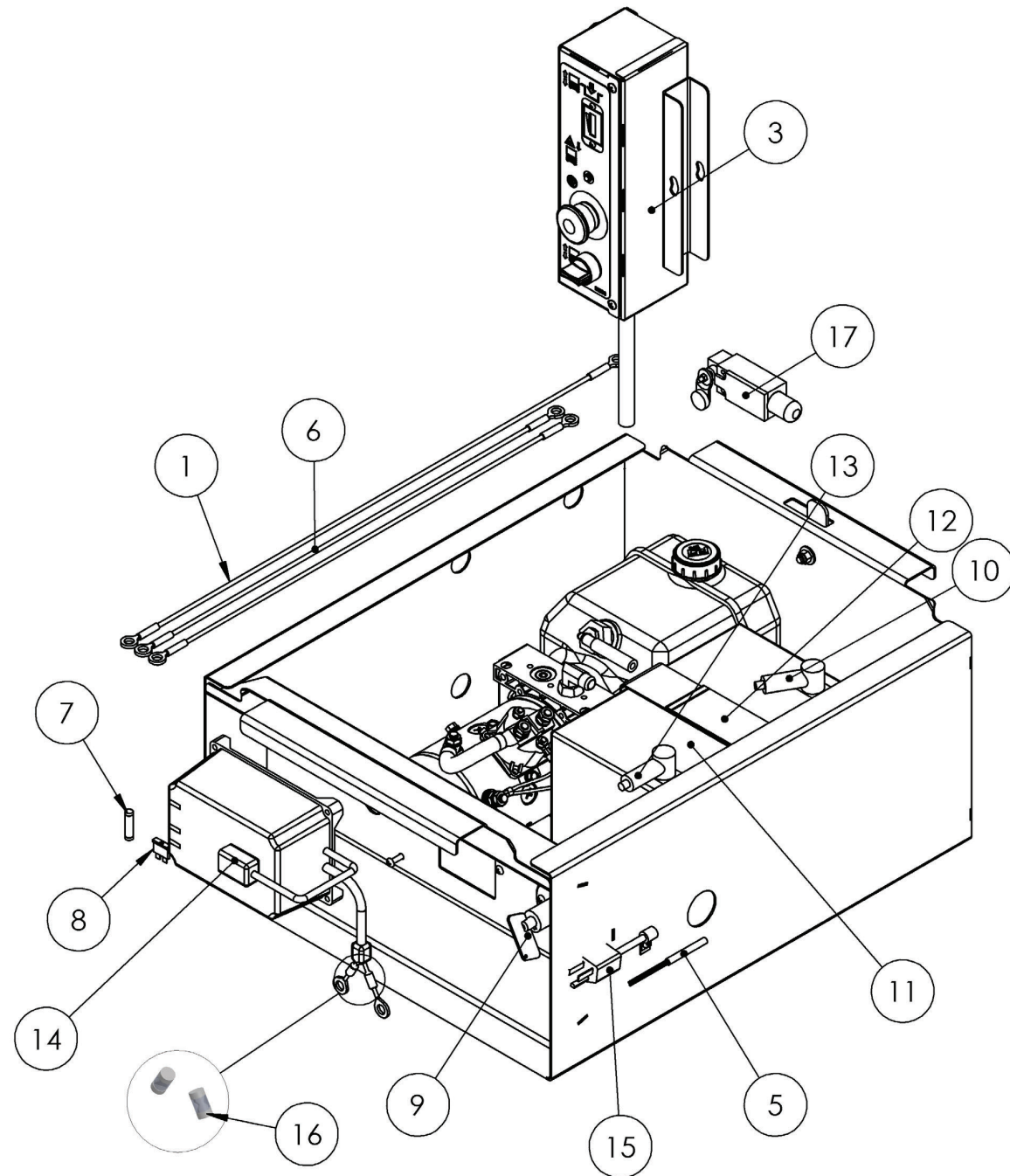


FIGURE 7: Electrical Parts

Item #	Part Number	Part Description	Notes	Qty	Superseded By
1	143-01-025-50	CABLE,6GA,RED,26,R/R,.38 EYES		1	
3	144-21-010-53	ASM,CTL UPR HB-P4.5/5.0	HB-P4.5 & HB-P5.0 ONLY	1	
3	144-21-016-50	ASM,CTL UPR HB-P827/1027	HB-P827: D05-30000-30030 HB-P1027: D11-3000-30036	1	
3	144-21-075-50	ASM,CTL UPR HB-P827/1027	HB-P827: D05-30031-39999 HB-P1027: D11-30037-39999	1	
5	ELEC-639-5	CORD,IEC AC/IEC C13 RT ANG,24		1	
6	ELEC-641E	CABLE,6GA,BLK,22,B/B,.38 EYES		2	
7	ELEC-670-2	FUSE 20 AMP AGC	HB-P4.5 & HB-P5.0 HB-P827: D05-30000-30030 HB-P1027: D11-3000-30036	1	
8	ELEC-959	FUSE, 20A ATC	HB-P827: D05-30031-39999 HB-P1027: D11-30037-39999	1	
9	ELEC-633-2	SWITCH,BATT DISCONNECT		1	
10	ELEC-634D	TERMINAL BOOT (BLACK)		3	
11	ELEC-047-6	BATTERY,12V,GR24 AGM		1	
12	HARD-684	BATTERY STRAP,VELCRO		1	
13	ELEC-634C	TERMINAL COVER (RED)		1	
14	ELEC-746	CHARGER,12V		1	
15	ELEC-639-4	CORD,NEMA/IEC RT ANG, 2FT.		1	
16	ELEC-670-6	FUSE 30 AMP,PCS		2	
17	ELEC-123-5	SWITCH,LIMIT,ROT LVR,NO/NC PO		1	
18	WD-144-20-001-51	WD,HB-P4.5/5.0	HB-P4.5 & HB-P5.0 HB-P827: D05-30000-30030 HB-P1027: D11-3000-30036 WIRING DIAGRAM	1	
18	WD-144-20-002-50	WD,HB-P827/1027	HB-P827: D05-30031-39999 HB-P1027: D11-30037-39999 WIRING DIAGRAM	1	
20	WS-144-20-001-51	ELEC SCH,HB-P4.5/5.0	HB-P4.5 & HB-P5.0 HB-P827: D05-30000-30030 HB-P1027: D11-3000-30036 ELECTRICAL SCHEMATIC	1	
20	WS-144-20-002-50	ELEC SCH,HB-P	HB-P827: D05-30031-39999 HB-P1027: D11-30037-39999 ELECTRICAL SCHEMATIC	1	



2.2 | UPPER CONTROL PARTS

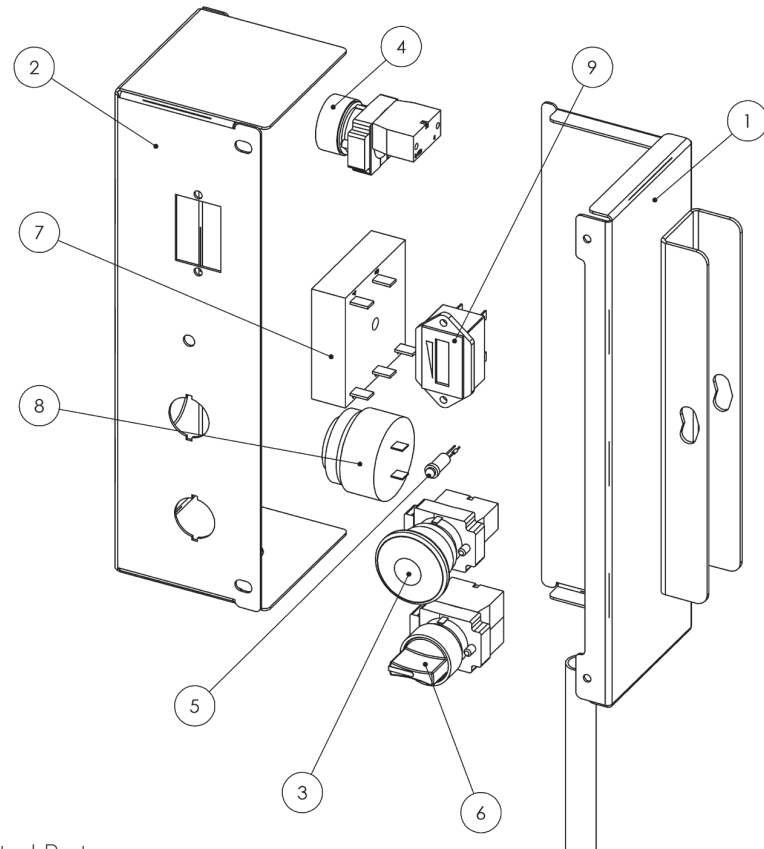


FIGURE 8: Upper Control Parts

Item #	Part Number	Part Description	Notes	Qty	Superseded By
1	144-03-004-01	RAIL,CTL BOX MNT		1	
2	144-03-007-01	RAIL,CTL PANEL UPR		1	
3	ELEC-071-KIT	EMERGENCY STOP BUTTON		1	
4	ELEC-602-KIT	BUTTON,PUSH GREEN		1	
5	ELEC-636	LED, RED		1	
6	ELEC-002A-KIT2	SWITCH,ROTARY MOMENTARY,3-POS		1	
7	ELEC-632	RELAY,TIME DELAY		1	
8	ELEC-635	ALARM,SLOW PULSE		1	
9	ELEC-610-5	METER,VOLT,12V		1	
10	WD-144-21-010-51	WD,UPR CTL HB-P4.5/5.0	HB-P4.5 & HB-P5.0 WIRING DIAGRAM	1	
10	WD-144-21-016-50	WD,UPR CTL HB-P827/1027	HB-P827: D05-30000- 30030 HB-P1027: D11-3000-30036 WIRING DIAGRAM	1	
10	WD-144-21-075-50	WD,UPR CTL HB-P827/1027	HB-P827: D05-30031-39999 HB-P1027: D11-30037-39999 WIRING DIAGRAM	1	

2.3 | ENABLE SWITCH SUBPARTS

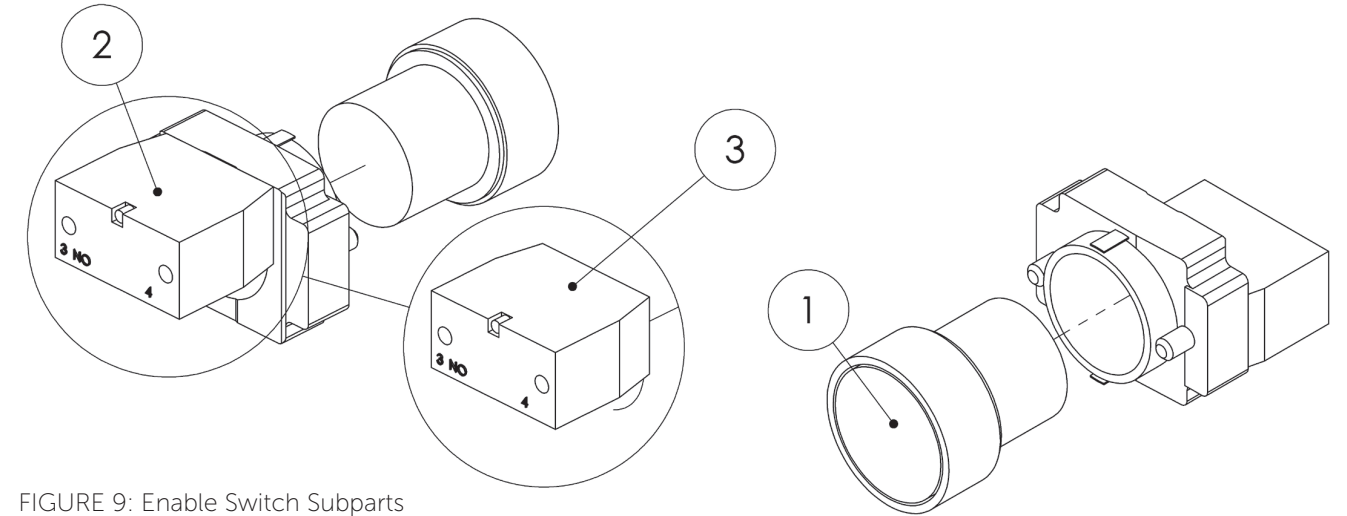


FIGURE 9: Enable Switch Subparts

Item #	Part Number	Part Description	Notes	Qty	Superseded By
1	ELEC-602	BUTTON,PUSH GREEN		1	
2	ELEC-871	CONTACT BLOCK,NO W/BASE		1	
3	ELEC-603	CONTACT BLOCK,NO		1	

2.4 | E-STOP SWITCH SUBPARTS

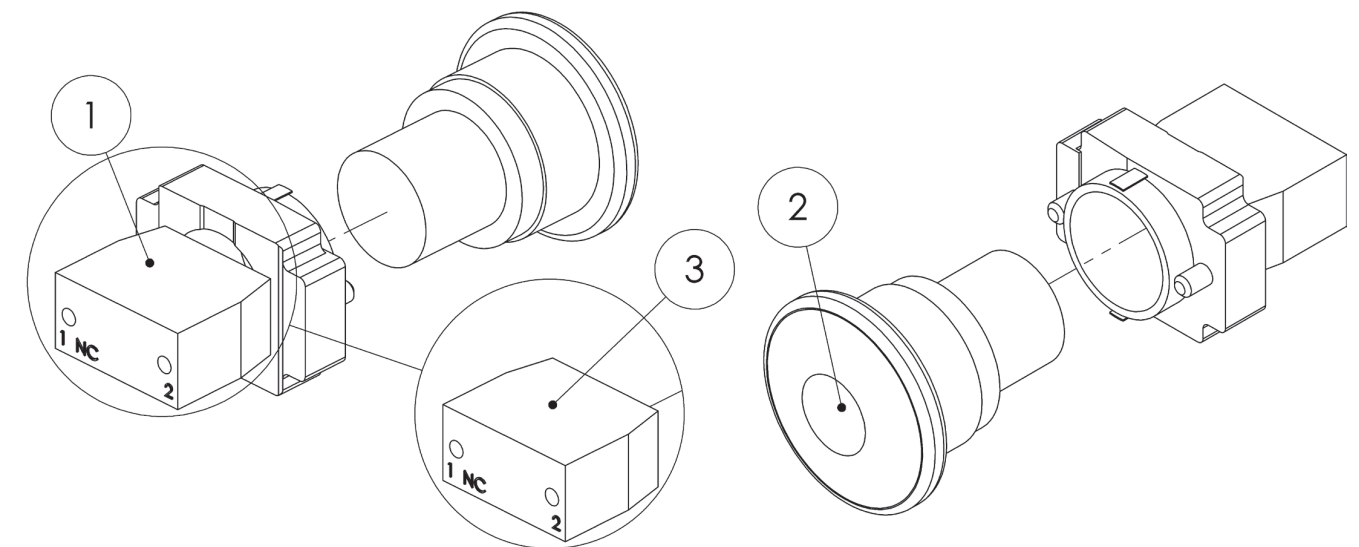


FIGURE 10: Brake Subparts

Item #	Part Number	Part Description	Notes	Qty	Superseded By
1	ELEC-872-KIT	CONTACT BLOCK,NC W/BASE		1	
2	ELEC-071	BUTTON,PUSH/PULL RED E-STOP		1	
3	ELEC-072	CONTACT BLOCK,NC		1	

2.5 | MASTER POWER SWITCH SUBPARTS

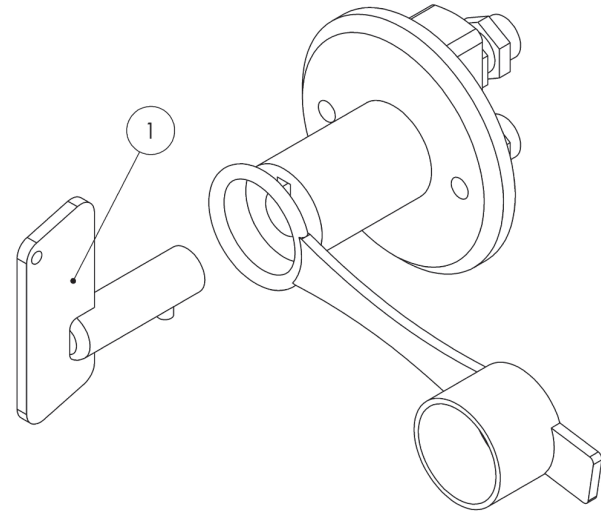


FIGURE 11: Master Power Switch Subparts

Item #	Part Number	Part Description	Notes	Qty	Superseded By
1	ELEC-633-3	SWITCH LEVER,BATT DISCONNECT		1	

2.6 | UP/DOWN SWITCH SUBPARTS

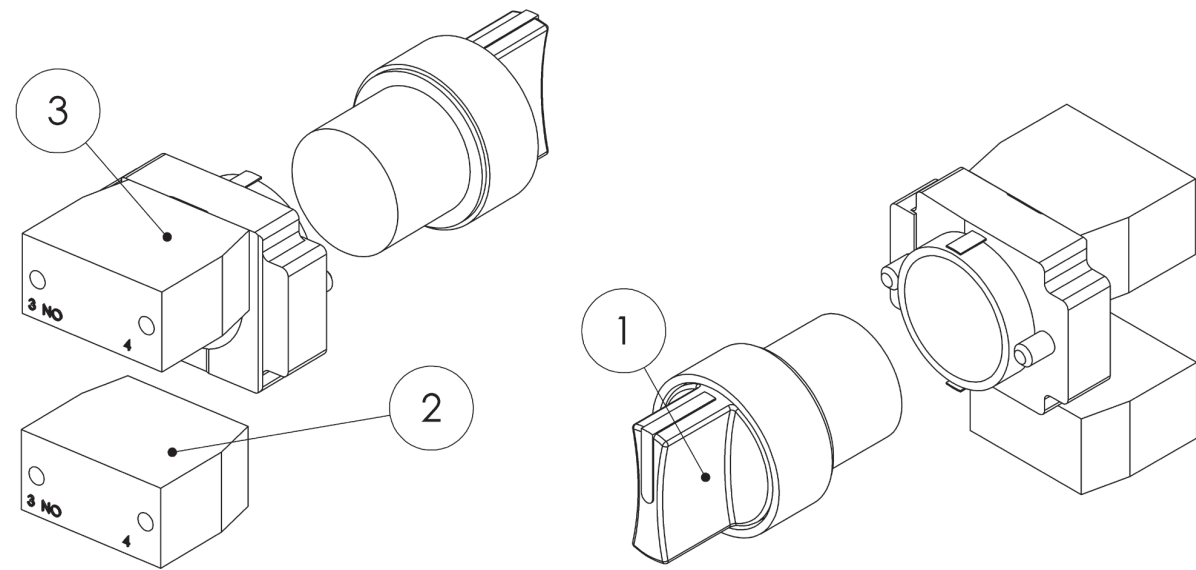
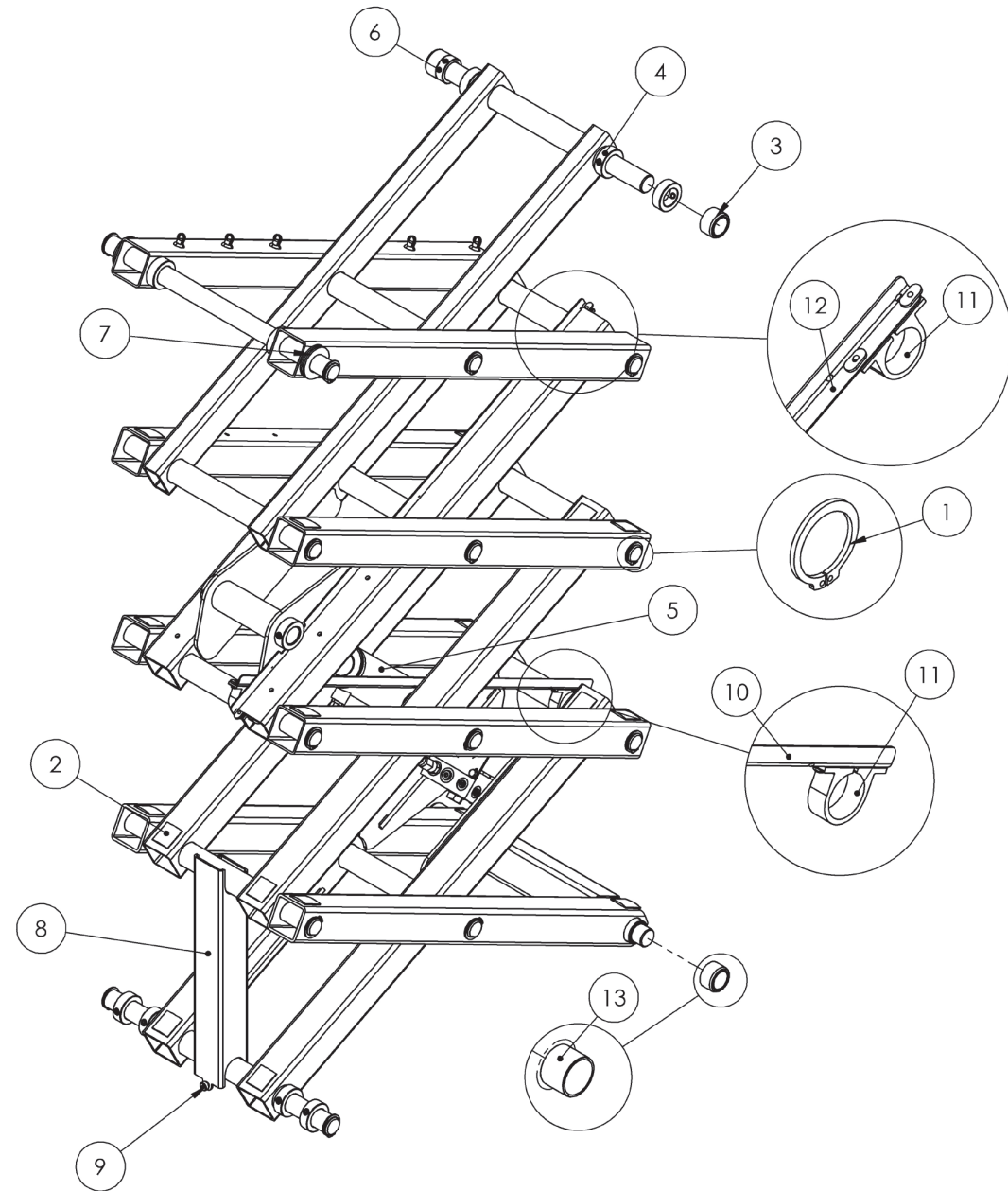


FIGURE 12: Up/Down Switch Subparts

Item #	Part Number	Part Description	Notes	Qty	Superseded By
1	ELEC-002A	SWITCH,ROTARY MOMENTARY,3-POS		1	
2	ELEC-603	CONTACT BLOCK,NO		1	
3	ELEC-871-KIT	CONTACT BLOCK,NO W/BASE		1	

THIS PAGE WAS INTENTIONALLY LEFT BLANK

## 3.1 | SCISSORS PARTS



Item #	Part Number	Part Description	Notes	Qty	Superseded By
1	HARD-022	1.25 RETAINING RING,EXT		20-26	
2	MISC-007-001-KIT	1 3/8 MOLDING BOND		16-20	
3	BM-6006-1-KIT	ASM,ROLLER,1.00 W/DU		4	
4	1021000102	SET COLLAR,1.25 ID		9	
5	144-21-012-51-K	ASM,SCISSOR CYL HB-4.5/827	HB-P4.5 & HB-P827 ONLY	1	
5	144-21-015-51-K	ASM,SCISSOR CYL HB-5.0/1027	HB-P5.0 & HB-P1027 ONLY	1	
6	144-10-001-02	SET COLLAR,1.25 ID		1	
7	HARD-716	1.25X2.25X0.13 WASH		6	
8	1000203401	SCISSOR,ML TUBE		1	
9	SCREW-3101	5/16-18 X 2.5 SHOULDER SCREW		1	
10	1000201916	SCISSOR,CONDUIT		1	
11	HARD-709	1.63 CLAMP		2-4	
12	144-02-013-01	SCISSOR,CONDUIT	Used on HB-P5.0 & HB-P1027	1	
13	HARD-001	1.25X1.00 SLEEVE BEARING,PTFE		1	

FIGURE 13: Scissors Parts

3.2 | CYLINDER SUBPARTS

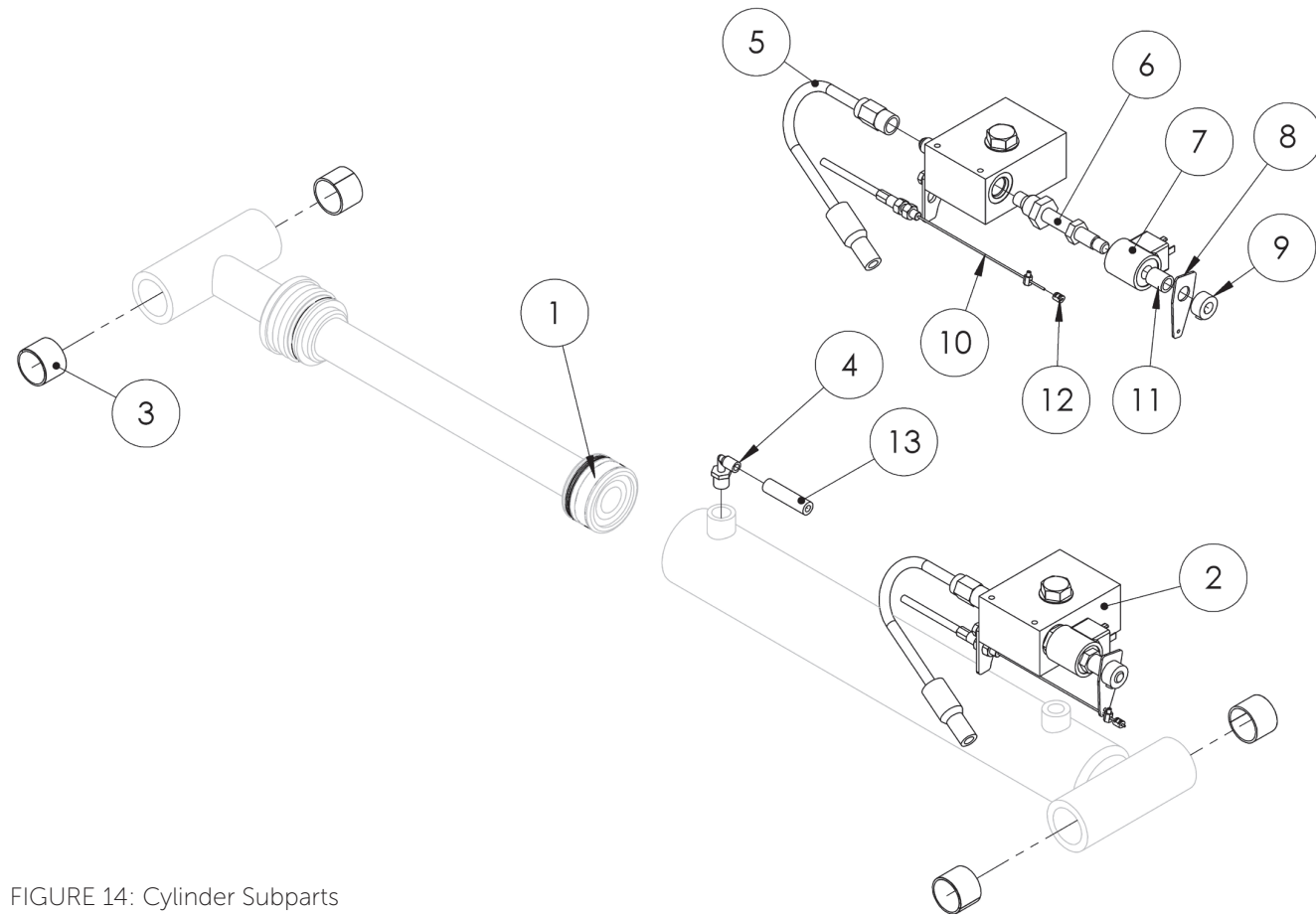


FIGURE 14: Cylinder Subparts

Item #	Part Number	Part Description	Notes	Qty	Superseded By
1	HYDR-009-SK	CYL,SEAL KIT 2.5 B,1.5 R		1	
2	144-21-011-51-K	ASM,SCISSOR CYL VALVE BLOCK		1	
3	HARD-001	1.25X1.00 SLEEVE BEARING,PTFE		4	
4	HYDR-019	FITTING,ELB,NPTM 3/8-1/4 PUSH		1	
5	HYDR-600-5	HOSE ASM,PRECUT 8FT3X		1	
6	HYDR-007-2E-5	VALVE,NC,2W/2P,#8,DWN,PULL,DEL		1	
7	HYDR-007-2E-6	COIL,12V,HC		1	
8	LAS-M115	SCISSOR,PLATE E-DOWN ACT		1	
9	HARD-650	0.44X0.88X0.44 SHAFT COLLAR		1	
10	HARD-644-06	86/96 LOW FRICTION CABLE		1	
11	HARD-621	038X0.63X075 SLEEVE BEARING		1	
12	HARD-900	SLEEVE,CABLE STOP 0.09		1	
13	HYDR-022-3	LOW PRESSURE HOSE	Quantity in inches	93	

THIS PAGE WAS INTENTIONALLY LEFT BLANK

# SECTION 4 | PLATFORM & RAILS

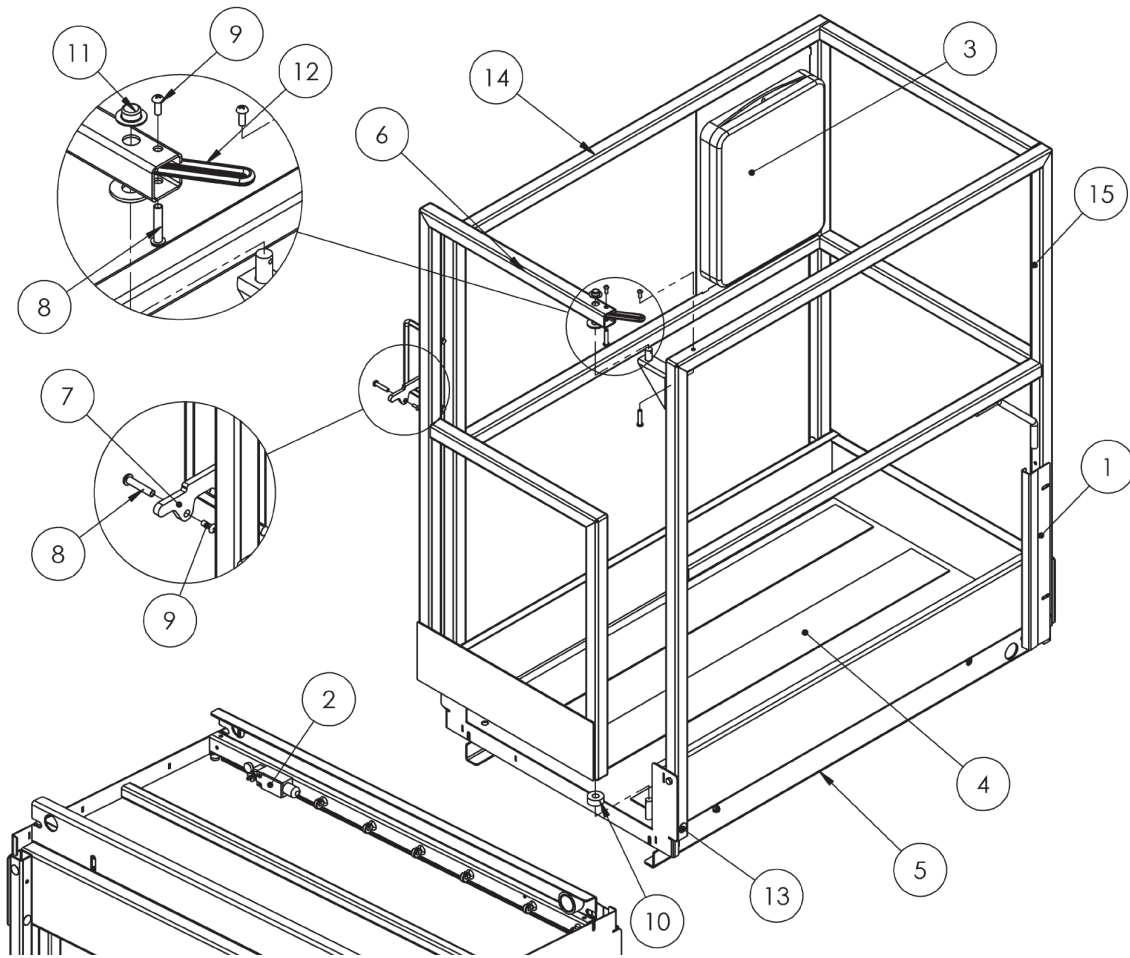


FIGURE 15: Platform & Rails

Item #	Part Number	Part Description	Notes	Qty	Superseded By
1	144-03-008-01	PF,WIRE BRACKET		1	
2	ELEC-123-5	SWITCH,LIMIT,ROT LVR,NO/NC PO		1	
3	HARD-603	MANUAL BOX		1	
4	MISC-031-05-KIT	ANTI-SLIP TAPE,4.00,37.50 LENG		3	
5	144-04-001-01	PF,WLDMNT HB-P4.5/5.0		1	
6	143-03-008-01	RAIL,GATE		1	
7	1000307601	RAIL,GATE LATCH		1	
8	HARD-649	0.25 X 1.25 BARREL SCRW,10-24		3	
9	SCREW-1100	10-24 X 0.50 PAN HEAD SCRW		3	
10	143-04-007-04	SPACER,.5ID,1.25OD, 0.5 THK		1	
11	HARD-656-1	QUICK NUT-1/2 ROD		1	
12	HARD-606-2	ORING,0.25 X 5		1	
13	HARD-645	PLUG,0.69 DIA,BLACK		7	
14	143-03-006-01	RAIL,WLDMNT		1	
15	HARD-067-2	0.31 SNAP BUTTON,DOUBLE END		1	

THIS PAGE WAS INTENTIONALLY LEFT BLANK

5.1 | DECALS-ANSI/CSA

ANSI/CSA

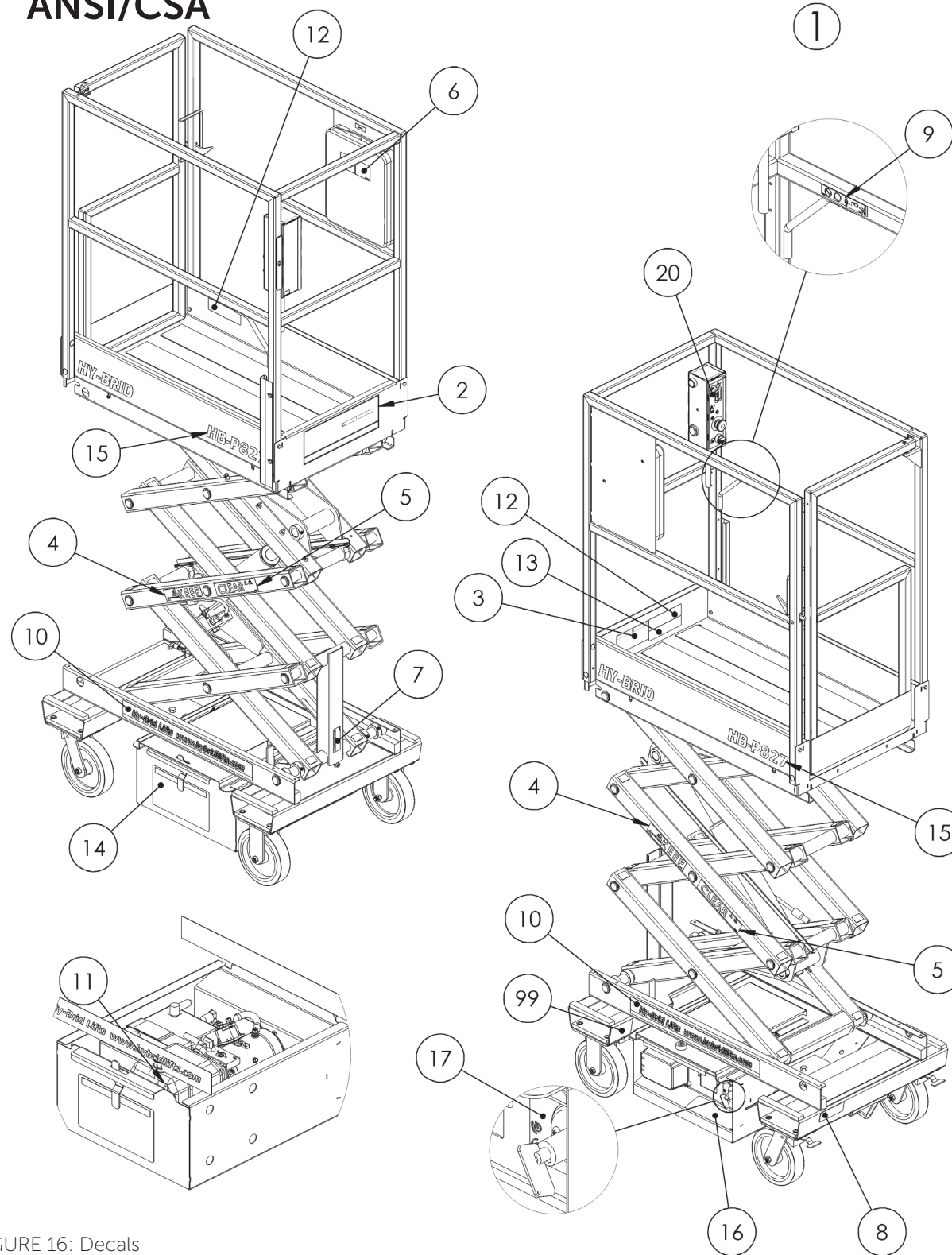


FIGURE 16: Decals

Item #	Part Number	Part Description	Notes	Qty	Superseded By
1	144-21-007-50-K	DECALS,HB-P827	DECAL SET	1	
1	144-21-007-52-K	DECALS,HB-P1027	DECAL SET	1	
2	DE601	DECAL,LOGO HY-BRID	SUPERSEDED;	1	DE821
2	DE821	DECAL,LOGO HY-BRID		1	
3	DE706	DECAL,UPR HB		1	
4	DE727	DECAL,KEEP		2	
5	DE728	DECAL,CLEAR		2	
6	DE600E-10	DECAL,MANUAL BOX		1	
7	DE600E-14	DECAL,MAINT LOCK		1	
8	DE751	DECAL,E-DOWN CABLE		1	
9	DE746	DECAL,LANYARD ATTACHMENT		1	
10	DE652	DECAL,WEBSITE	SUPERSEDED;	2	DE822
10	DE822	DECAL,WEBSITE		2	
11	DE679	DECAL,HYDR FLUID		1	
12	DE742	DECAL,CAPACITY,550#,1P,I,WO/SO		2	
13	DE730	DECAL,OL ALARM		1	
14	DE739	DECAL, LWR		1	
15	DE603-12	DECAL,MODEL HB-P827		2	
15	DE603-13	DECAL,MODEL HB-P1027		2	
16	DE759	DECAL,LWR PWR		1	
17	DE760	DECAL,E-STOP HANDLE		1	
18	DE851	DECAL,PF HOLE WARNING		2	
20	DE738	DECAL, CONTROL UPR		1	
99	N/A	SERIAL NUMBER DECAL		1	

5.2 | DECALS-CE  
**CE**

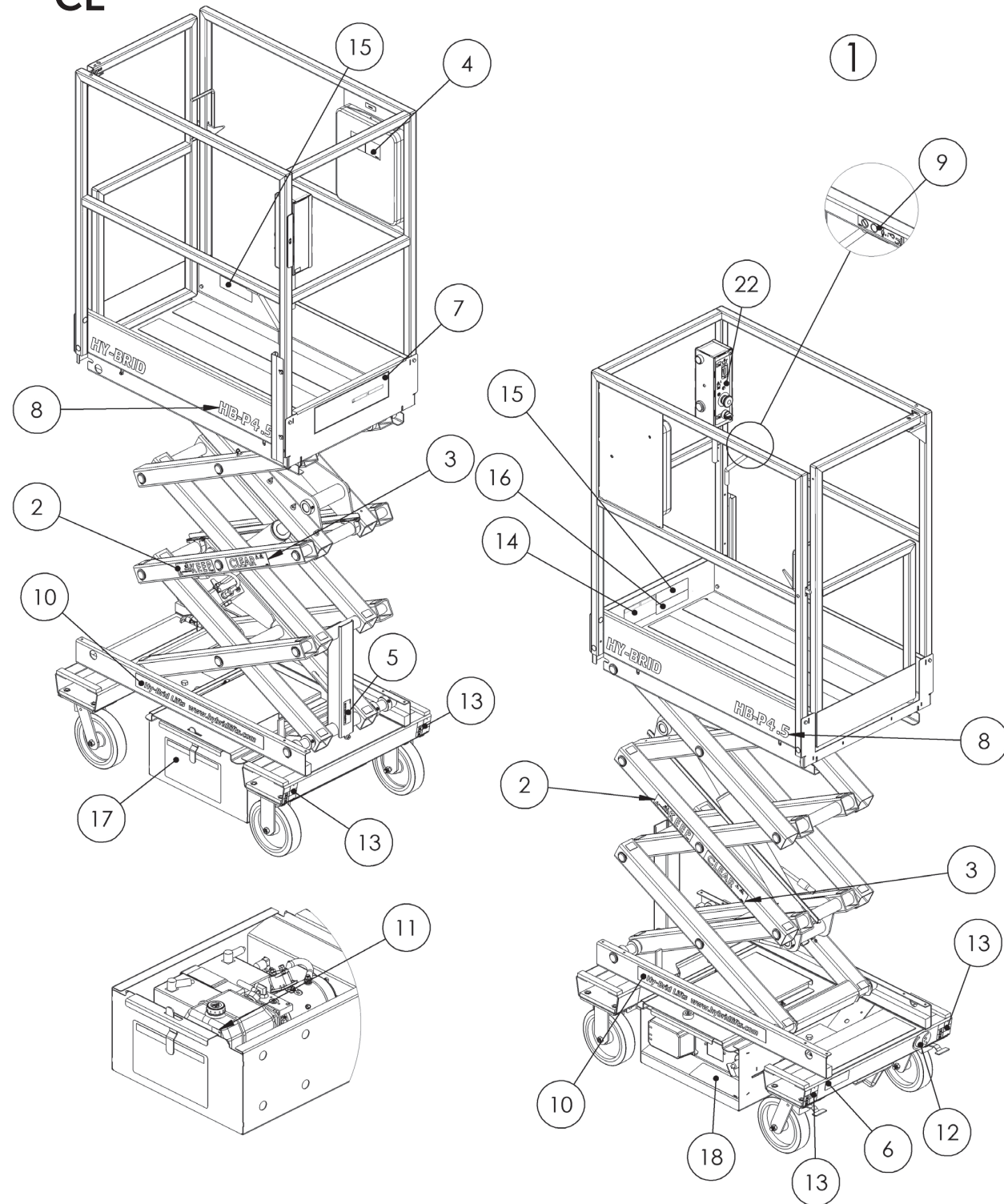


FIGURE 17: Decals-CE

Item #	Part Number	Part Description	Notes	Qty	Superseded By
1	144-21-007-51-K	DECALS,HB-P4.5	DECAL SET	1	
1	144-21-007-53-K	DECALS,HB-P5.0	DECAL SET	1	
2	DE727	DECAL,KEEP		2	
3	DE728	DECAL,CLEAR		2	
4	DE600E-10	DECAL,MANUAL BOX		1	
5	DE600E-14	DECAL,MAINT LOCK		1	
6	DE751	DECAL,E-DOWN CABLE		1	
7	DE601	DECAL,LOGO HY-BRID		1	DE821
7	DE821	DECAL,LOGO HY-BRID		1	
8	DE603-7	DECAL,MODEL HB-P4.5		2	
8	DE603-8	DECAL,MODEL HB-P5.0		2	
9	DE746	DECAL,LANYARD ATTACHMENT		1	
10	DE652	DECAL,WEBSITE		2	DE822
10	DE822	DECAL,WEBSITE		2	
11	DE679	DECAL,HYDR FLUID		1	
12	DE718	DECAL,CE		1	
13	DE723	DECAL,WHEEL LOAD HB-P4.5		4	
13	DE729	DECAL,WHEEL LOAD HB-P5.0		4	
14	DE706	DECAL,UPR HB		1	
15	DE742	DECAL,CAPACITY,550#,1P,I,WO/SO		2	
16	DE730	DECAL,OL ALARM		1	
17	DE739	DECAL, LWR		1	
18	DE740	DECAL,LWR PWR		1	
22	DE738	DECAL, CONTROL UPR		1	
99	N/A	SERIAL NUMBER DECAL		1	

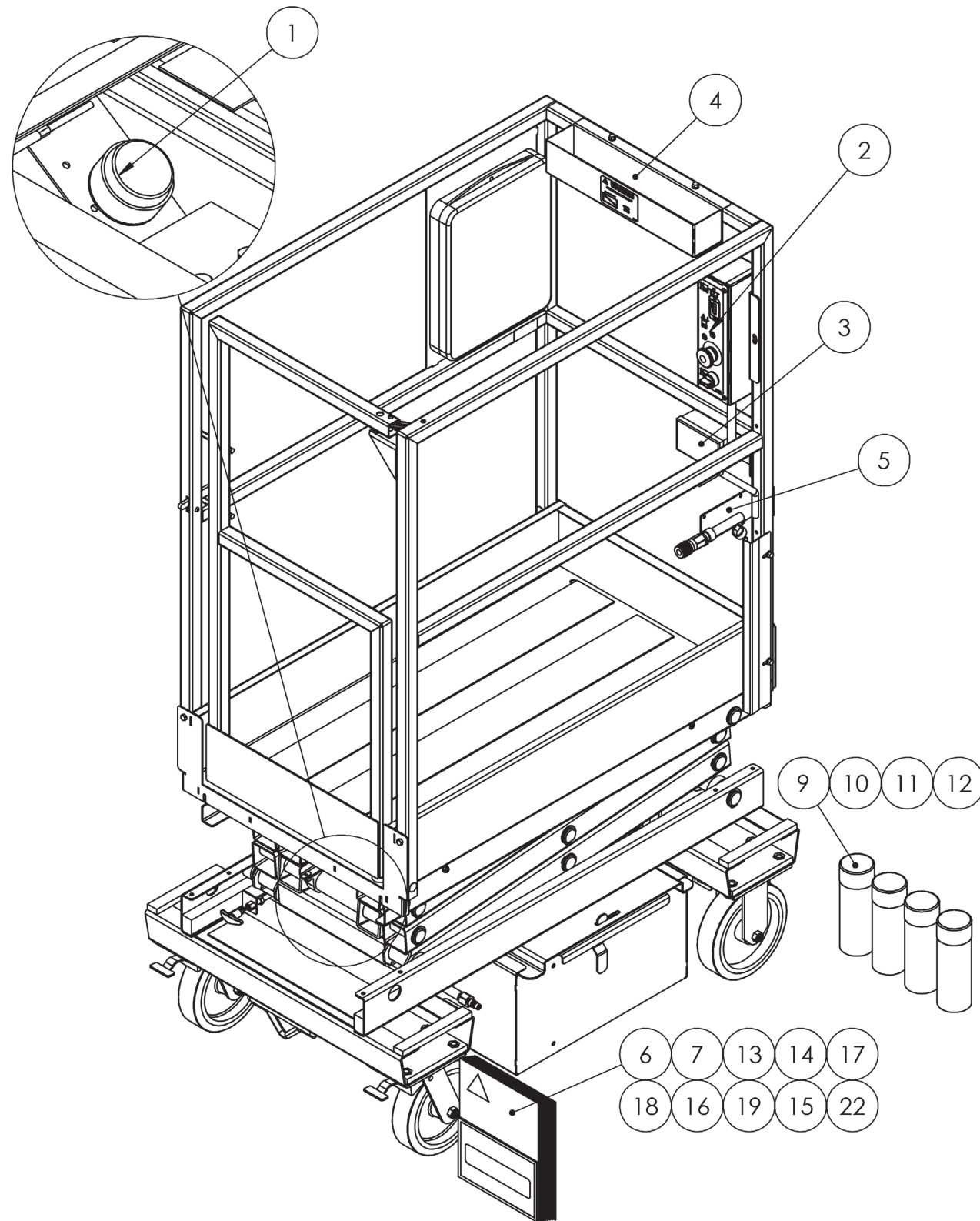


FIGURE 18: Options & Misc

Item #	Part Number	Part Description	Notes	Qty	Superseded By
1	144-21-018-50-K	BEACON,FLASHING(AMBER) HB5M		1	
2	144-21-019-50-K	MOTION ALARM,HB-P827/1027 S1		1	
3	144-21-022-50-K	ASM,PTP HB-P827		1	
3	144-21-022-52-K	ASM,PTP HB-10827		1	
4	144-21-021-50-K	TOOL TRAY, HB		1	
5	144-21-024-50-K	ASM,AIR TO PF HB-827		1	
5	144-21-024-51-K	ASM,AIR TO PF HB-1027		1	
6	MISC-601-1	MANUAL OF RESPONSIBILITY A92.3		1	
7	MISC-600	MANUAL,AERIAL PF		1	
8	HS-HB-P830CE	HYDR SCH,HB-P	HYDRAULIC SCHEMATIC	1	
9	MISC-624	PAINT,WHITE TOUCH-UP SPRAY		1	
10	MISC-625	PAINT,YELLOW TOUCH-UP SPRAY		1	
11	MISC-627	PAINT,GREEN TOUCH-UP SPRAY		1	
12	MISC-016	PAINT,RED TOUCH-UP SPRAY		1	
13	SUPO-647	MANUAL,OP HB-P4.5/5.0	For HB-P4.5 & HB-P5.0	1	
14	SUPO-648	MANUAL,MAINT,HB-P4.5/5.0	For HB-P4.5 & HB-P5.0	1	
15	SUPO-649	DOCUMENT,CE DECL HB-P4.5	For HB-P4.5	1	
16	SUPO-670	MANUAL,MAINT, HB-P827/1027 S1		1	
17	SUPO-671	MANUAL,OP, HB-P827/1027 S1	HB-P827: D05-30000-30030 HB-P1027: D11-3000-30036	1	
18	SUPO-722	MANUAL,MAINT, HB-P827/1027 S1	HB-P827: D05-30031-39999 HB-P1027: D11-30037-39999	1	
19	SUPO-730	MANUAL,PARTS HB-P827/1027		1	
20	SUPO-665	DOCUMENT,CSA DECL HB-P1027	For HB-P1027	1	
21	SUPO-666	DOCUMENT,CSA DECL HB-P827	For HB-P827	1	
22	SUPO-654	DOCUMENT,CE DECL HB-P5.0	For HB-P5.0	1	



# **HY-BRID LIFTS™**

BY CUSTOM EQUIPMENT LLC

---

Push-Around Aerial Work Platform  
Parts Manual  
HB-P827/HB-P1027/HB-P45/HB-P5.0

---

© 2018 Custom Equipment, LLC  
2647 Highway 175  
Richfield, WI 53076  
U.S.A.  
Tel. +1-262-644-1300  
Fax: +1-262-644-1320  
[www.hybridlifts.com](http://www.hybridlifts.com)  
[Service@Customequipmentlifts.com](mailto:Service@Customequipmentlifts.com)

"Hy-Brid Lifts" is a trademark of Custom Equipment, LLC.  
These machines comply with specified ANSI, CSA & EN 280  
requirements.

Revision Date: October 2018

Printed In The USA