

# **HY-BRID LIFTS™**

BY CUSTOM EQUIPMENT LLC

## **PARTS MANUAL**

SELF-PROPELLED AERIAL WORK PLATFORM

SUPO-682

REV F



---

# **HB-1030**

# **HB-1430**

---

SERIES II

MODEL HB-1030 SERIAL # RANGES:  
D11002-D11005  
D01-10010-D01-19999

MODEL HB-1430 SERIAL # RANGES:  
D21-0002-D210009  
D02-10010-10013  
D02-10015-D02-19999



# TABLE OF CONTENTS

NOTES.....	2
FOREWORD.....	3
TABLE OF CONTENTS.....	4
INDEX OF FIGURES.....	5
<b>SECTION 1   BASE.....</b>	<b>6</b>
1.1   POTHOLE GUARD PARTS.....	6
1.2   POTHOLE ACTUATOR SUBPARTS.....	8
1.3   STEER ACTUATOR PARTS.....	9
1.4   CENTER STEER SUBPARTS.....	12
1.5   CASTER SUBPARTS.....	13
1.6   FRONT WHEEL SUBPARTS.....	15
1.7   DRIVE PARTS.....	16
1.8   DRIVE SUBPARTS.....	18
1.9   DRIVE BRAKE SUBPARTS.....	20
1.10   PUMP PARTS.....	21
1.11   PUMP SUBPARTS.....	24
1.12   MISCELLANEOUS PARTS.....	26
<b>SECTION 2   CONTROLS.....</b>	<b>30</b>
2.1   MAIN CABLE SUBPARTS.....	34
2.2   UPPER CONTROL PARTS.....	36
2.3   JOYSTICK SUBPARTS.....	39
2.4   LOWER CONTROL PARTS.....	40
2.5   ENABLE SWITCH SUBPARTS.....	44
2.6   E-STOP SWITCH SUBPARTS.....	44
2.7   KEY SWITCH SUBPARTS.....	45
2.8   ELEVATE/LOWER SWITCH PARTS.....	46
2.9   MASTER POWER SWITCH PARTS.....	47
<b>SECTION 3   SCISSOR.....</b>	<b>48</b>
3.1   SCISSOR PARTS.....	48
3.2   CYLINDER SUBPARTS.....	52
<b>SECTION 4   PLATFORM &amp; RAILS.....</b>	<b>54</b>
4.1   PLATFORM & RAILS PARTS.....	54
<b>SECTION 5   DECALS.....</b>	<b>56</b>
5.1   DECALS.....	56
<b>SECTION 6   OPTIONS &amp; MISCELLANEOUS.....</b>	<b>60</b>
6.1   OPTIONS & MISCELLANEOUS PARTS.....	60

# INDEX OF FIGURES

FIGURE 1: HB-1030 Pothole Guard Parts.....	6
FIGURE 2: HB-1430 Pothole Guard Parts.....	7
FIGURE 3: HB-1030/1430 Pothole Actuator Subparts.....	8
FIGURE 4: HB-1030 Steer Parts.....	9
FIGURE 5: HB-1430 Steer Parts.....	10
FIGURE 6: HB-1030/1430 Steer Actuator Part.....	11
FIGURE 7: HB-1030/1430 Center Steer Subparts.....	12
FIGURE 8: HB-1030 Caster Subparts.....	13
FIGURE 9: HB-1430 Caster Subparts.....	14
FIGURE 10: HB-1030/1430 Front Wheel Subparts.....	15
FIGURE 11: HB-1030/1430 Drive Parts.....	16
FIGURE 12: HB-1030/1430 Drive Subparts.....	18
FIGURE 13: HB-1030/1430 Brake Left Subparts.....	20
FIGURE 14: HB-1030 Pump Parts.....	21
FIGURE 15: HB-1430 Pump Parts.....	22
FIGURE 16: HB-1030/1430 Pump Subparts.....	24
FIGURE 17: HB-1030 BASE MISCELLANEOUS PARTS.....	26
FIGURE 18: HB-1430 Base Miscellaneous Parts.....	28
FIGURE 19: HB-1030 Controls/Electrical Parts.....	30
FIGURE 20: HB-1430 Controls/Electrical Parts.....	32
FIGURE 21: HB-1030/HB-1430 Main Cable.....	34
FIGURE 22: HB-1430/HB-1030 Upper Control Parts.....	36
FIGURE 23: HB-1030/1430 Joystick Subparts.....	39
FIGURE 24: HB-1030 Lower Control Parts.....	40
FIGURE 25: HB-1430 Lower Control Parts.....	42
FIGURE 26: HB-1030/1430 Enable Switch Subparts.....	44
FIGURE 27: HB-1030/1430 E-Stop Switch Subparts.....	44
FIGURE 28: HB-1030/1430 Key Switch Subparts.....	45
FIGURE 29: Elevate Lower Switch Parts.....	46
FIGURE 30: Master Power Switch Parts.....	47
FIGURE 31: HB-1030 Scissor Parts.....	48
FIGURE 32: HB-1430 Scissor Parts.....	50
FIGURE 33: HB-1030 Cylinder Subparts.....	52
FIGURE 34: HB-1430 Cylinder Subparts.....	53
FIGURE 35: HB-1030/1430 Platform & Rail Parts.....	54
FIGURE 36: HB-1030 Decals.....	56
FIGURE 37: HB-1430 Decals.....	58
FIGURE 38: HB-1030 Options & Miscellaneous Parts.....	60
FIGURE 39: HB-1430 Options & Miscellaneous Parts.....	62

1.1 | POTHOLE GUARD PARTS

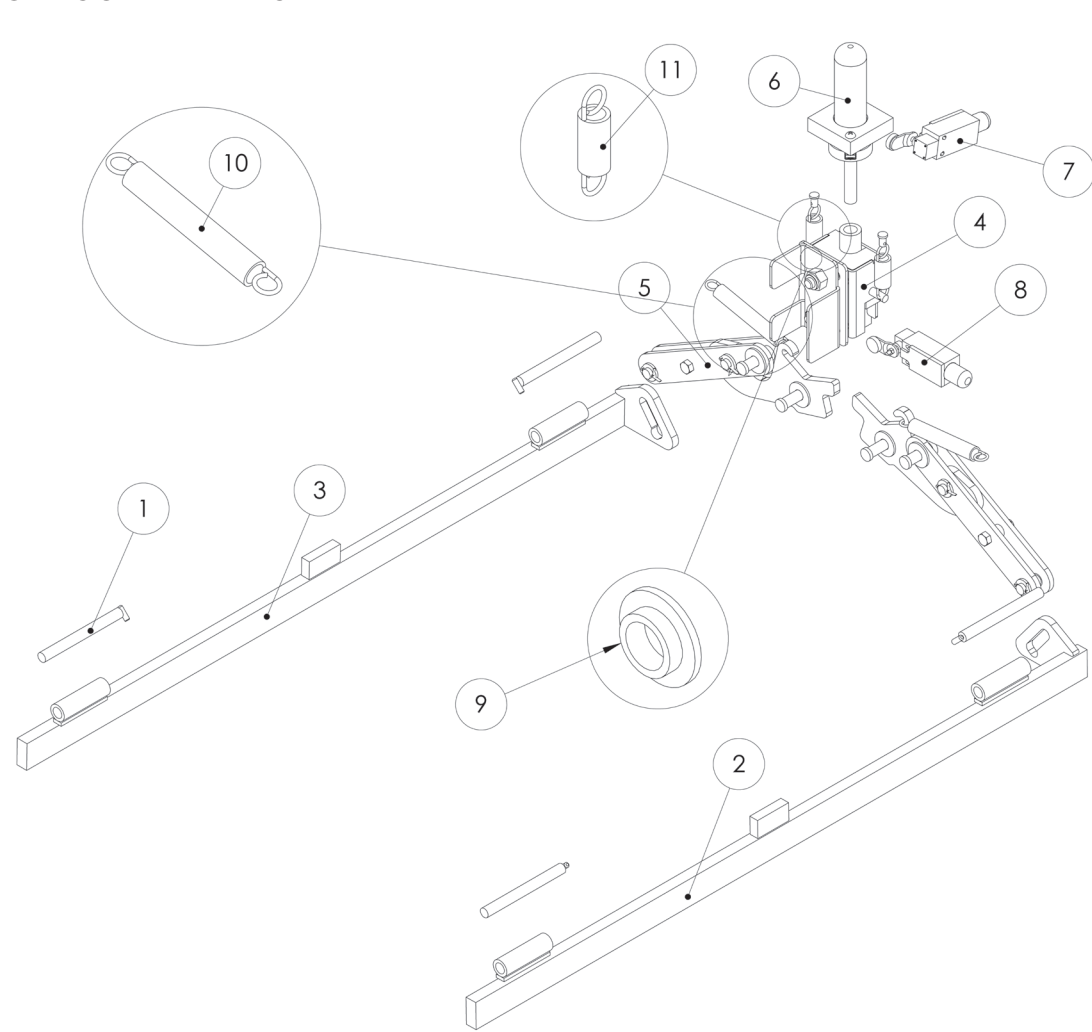


FIGURE 1: HB-1030 Pothole Guard Parts

Item #	Part Number	Part Description	Notes	Qty	Superseded By
1	RND-HB-002-P	PIN,HINGE,0.50,5.0		4	
2	HB-PH-41-L-EC	BASE,PH BAR L (HB2 8.0 WHL)		1	
3	HB-PH-41-R-EC	BASE,PH BAR R (HB2 8.0 WHL)		1	
4	1022101862-KIT	ASM,BASE PH LOCK		1	
5	1002100191-KIT	ASM,BASE PH ARMS		1	
6	SUB A28-KIT	ASM,BASE PH ACT		1	112-21-426-50-K
7	ELEC-123-5	SWITCH,LIMIT,ROT LVR,NO/NC PO		1	
8	ELEC-123-5	SWITCH,LIMIT,ROT LVR,NO/NC PO		1	
9	HARD-626	WASH,0.38ID,0.5D,0.19THK,NYL	Superseded; Obsolete	0	HARD-626-3
9	HARD-626-3	WASH,0.38ID,0.5D,0.19THK,NYL		1	
10	HARD-701	SPRING,EXT 5.5X.69		1	
11	HARD-702	SPRING, EXT 3X .75		1	

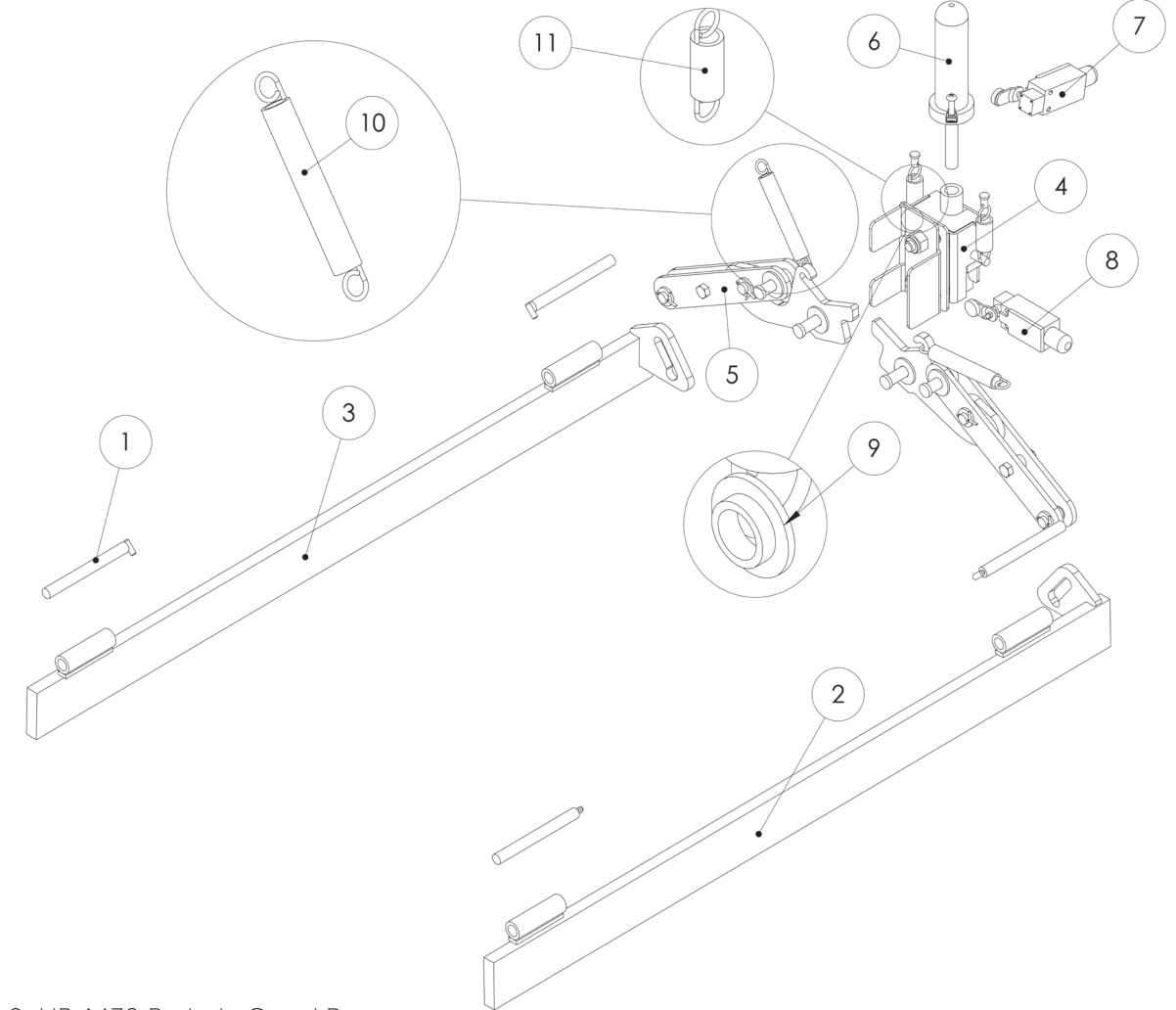


FIGURE 2: HB-1430 Pothole Guard Parts

Item #	Part Number	Part Description	Notes	Qty	Superseded By
1	RND-HB-002-P	PIN,HINGE,0.50,5.0		4	
2	HB-PH-21-L-EC	BASE,PH BAR L (HB2 10.0 WHL)		1	
3	HB-PH-21-R-EC	BASE,PH BAR R (HB2 10.0 WHL)		1	
4	1022101862-KIT	ASM,BASE PH LOCK		1	
5	1002100191-KIT	ASM,BASE PH ARMS		1	
6	SUB A28-KIT	ASM,BASE PH ACT		1	112-21-426-50-K
7	ELEC-123-5	SWITCH,LIMIT,ROT LVR,NO/NC PO		1	
8	ELEC-123-5	SWITCH,LIMIT,ROT LVR,NO/NC PO		1	
9	HARD-626	WASH,0.38ID,0.5D,0.19THK,NYL	Superseded; Obsolete	0	HARD-626-3
9	HARD-626-3	WASH,0.38ID,0.5D,0.19THK,NYL		1	
10	HARD-701	SPRING,EXT 5.5X.69		1	
11	HARD-702	SPRING, EXT 3X .75		1	

1.2 | POTHOLE ACTUATOR SUBPARTS

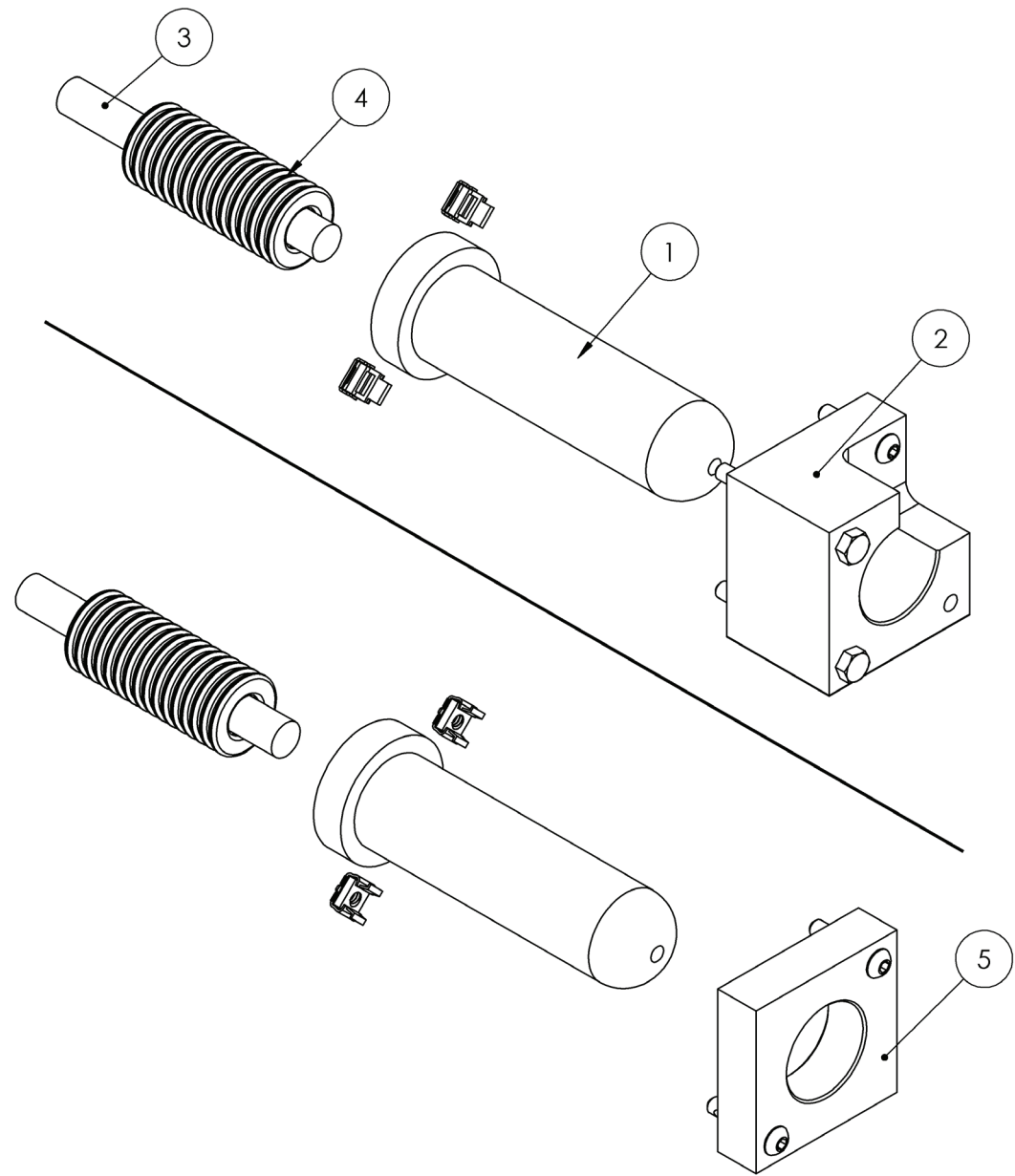


FIGURE 3: HB-1030/1430 Pothole Actuator Subparts

Item #	Part Number	Part Description	Notes	Qty	Superseded By
1	HB-PH-20	BASE,PH RET SLEEVE		1	
2	112-01-235-03	BASE,PH GUIDE BLOCK-1.5 ID		1	
3	HB-M220-P	PH PLUNGER ROD		1	
4	HARD-654	SPRING,COMP,3 X 1.2500,OD		1	
5	HB-PH-13	BASE,PH GUIDE BLOCK-1.5 ID	Superseded;	1	112-01-235-03

1.3 | STEER ACTUATOR PARTS

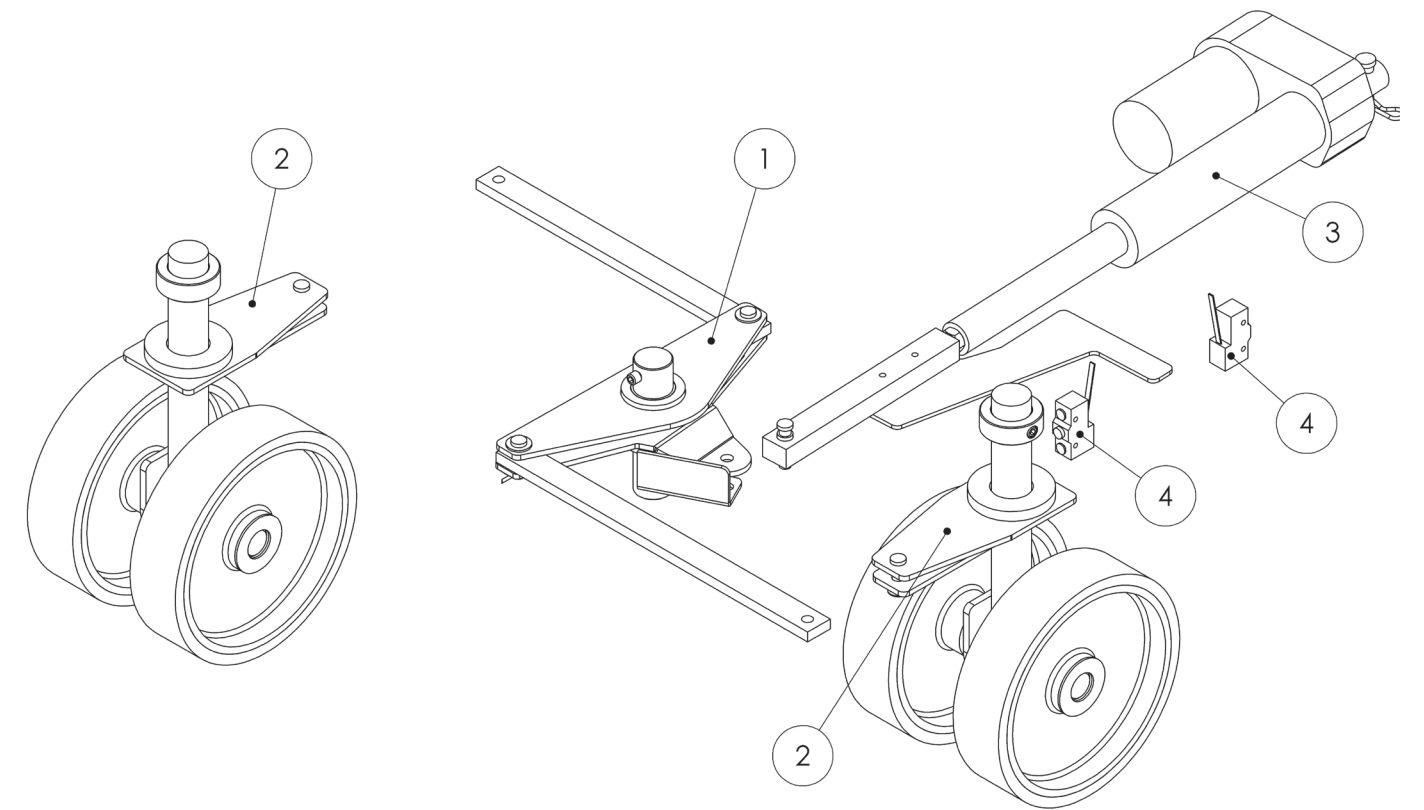


FIGURE 4: HB-1030 Steer Parts

Item #	Part Number	Part Description	Notes	Qty	Superseded By
1	SUB A26-KIT	ASM,BASE CENTER STEER		1	
2	SUB A45-KIT	ASM,BASE CASTERS 8IN WHL		2	
3	SUB A29-KIT	ASM,BASE STEER ACT		1	
4	ELEC-624	SWITCH,LIMIT STRAIGHT LEVER		1	

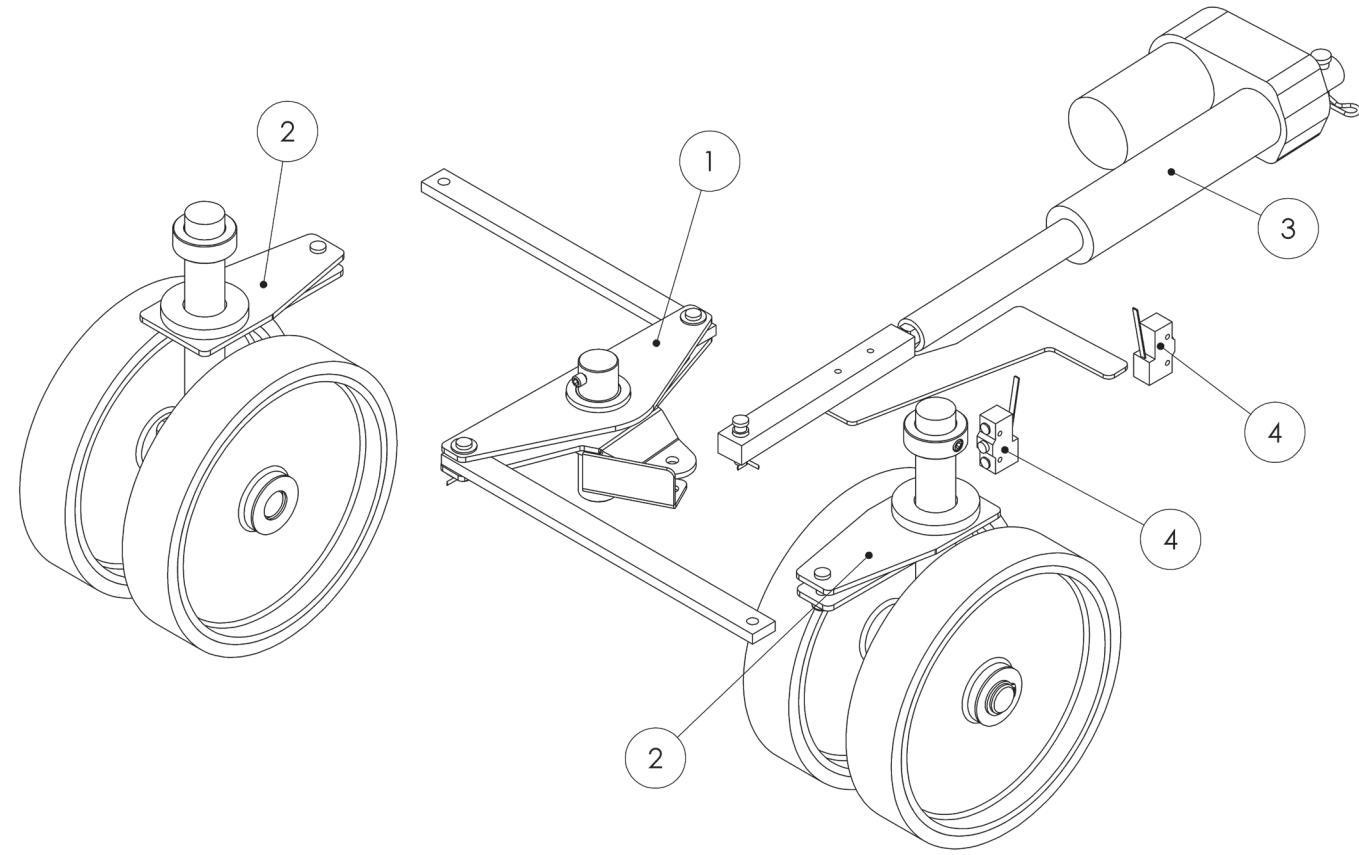


FIGURE 5: HB-1430 Steer Parts

Item #	Part Number	Part Description	Notes	Qty	Superseded By
1	SUB A26-KIT	ASM,BASE CENTER STEER		1	
2	SUB A27-KIT	ASM,BASE CASTER 10 WHL		2	
3	SUB A29-KIT	ASM,BASE STEER ACT		1	
4	ELEC-624	SWITCH,LIMIT STRAIGHT LEVER		1	

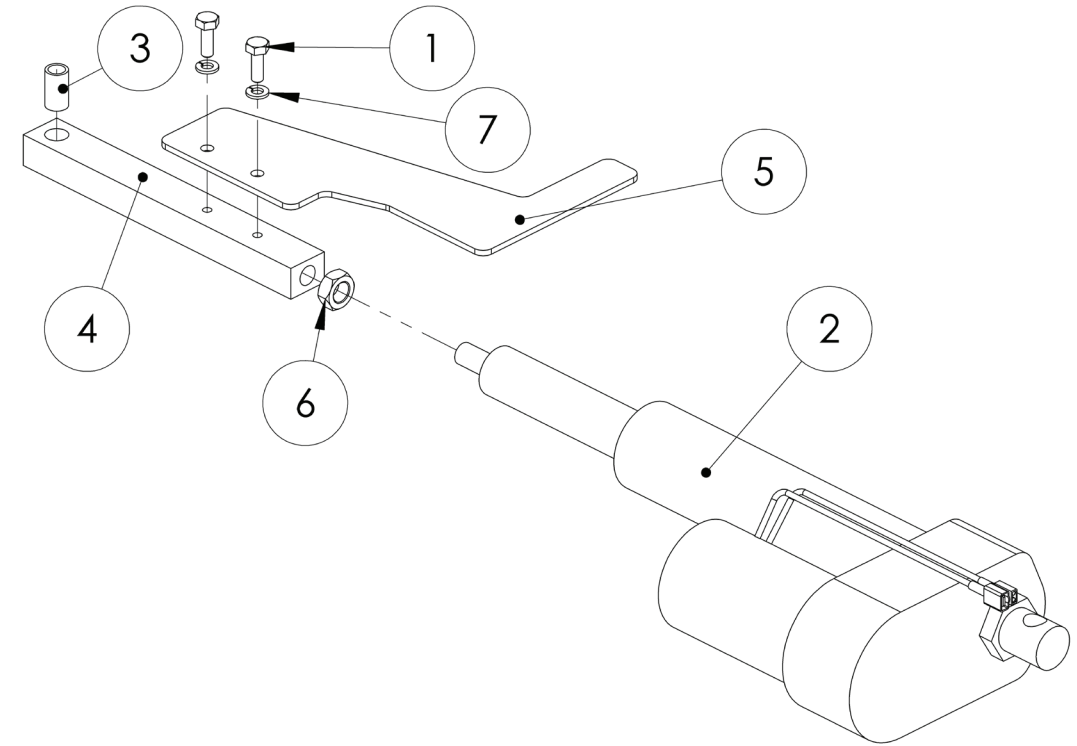


FIGURE 6: HB-1030/1430 Steer Actuator Part

Item #	Part Number	Part Description	Notes	Qty	Superseded By
1	BOLT-2502	1/4-20 X .75 HHCS		2	
2	ELEC-650	ACTUATOR		1	
3	HARD-620	BUSHING,0.38,0.50,0.88		1	
4	HB-M205-P	BASE,STEER ACT EXT		1	
5	LAS-M219-P	BASE,STEER LS ACT		1	
6	NUTS-6000	1/2-20 HEX JAM NUT (THIN)		1	
7	WASH-2521	1/4 LOCK WASHER		2	

1.4 | CENTER STEER SUBPARTS

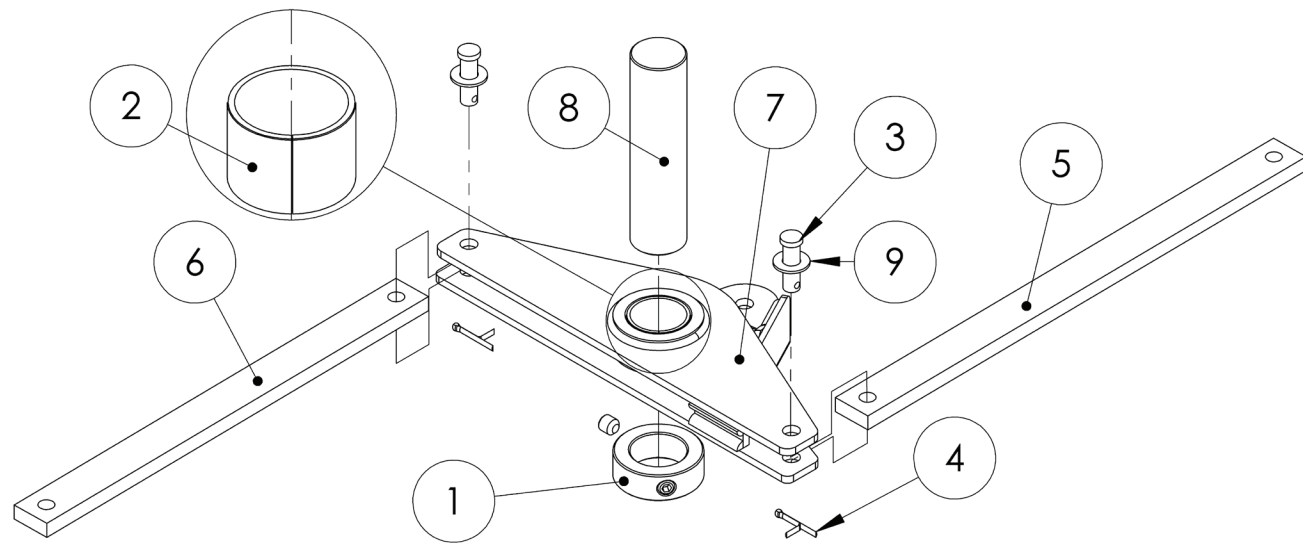


FIGURE 7: HB-1030/1430 Center Steer Subparts

Item #	Part Number	Part Description	Notes	Qty	Superseded By
1	1021000102	SET COLLAR,1.25 ID		1	
2	HARD-001	DU BEARING, 1.25 ID, 1 LENGTH		1	
3	HARD-641-5	CLEVIS PIN,3/8 X 1.25,PLATED		2	
4	HARD-643	COTTER PIN, 5/32 X 1		2	
5	HB-ST-2-A-P	BASE,TIE ROD LONG		1	
6	HB-ST-3-A-P	BASE,TIE ROD SHORT		1	
7	HB-ST-4-B-KIT	BASE,STEER WLDMNT (HB2)		1	
8	PB-0018-P	PIN,STEER,1.25,6.0		1	
9	WASH-3800	3/8 FLAT WASHER		2	

1.5 | CASTER SUBPARTS

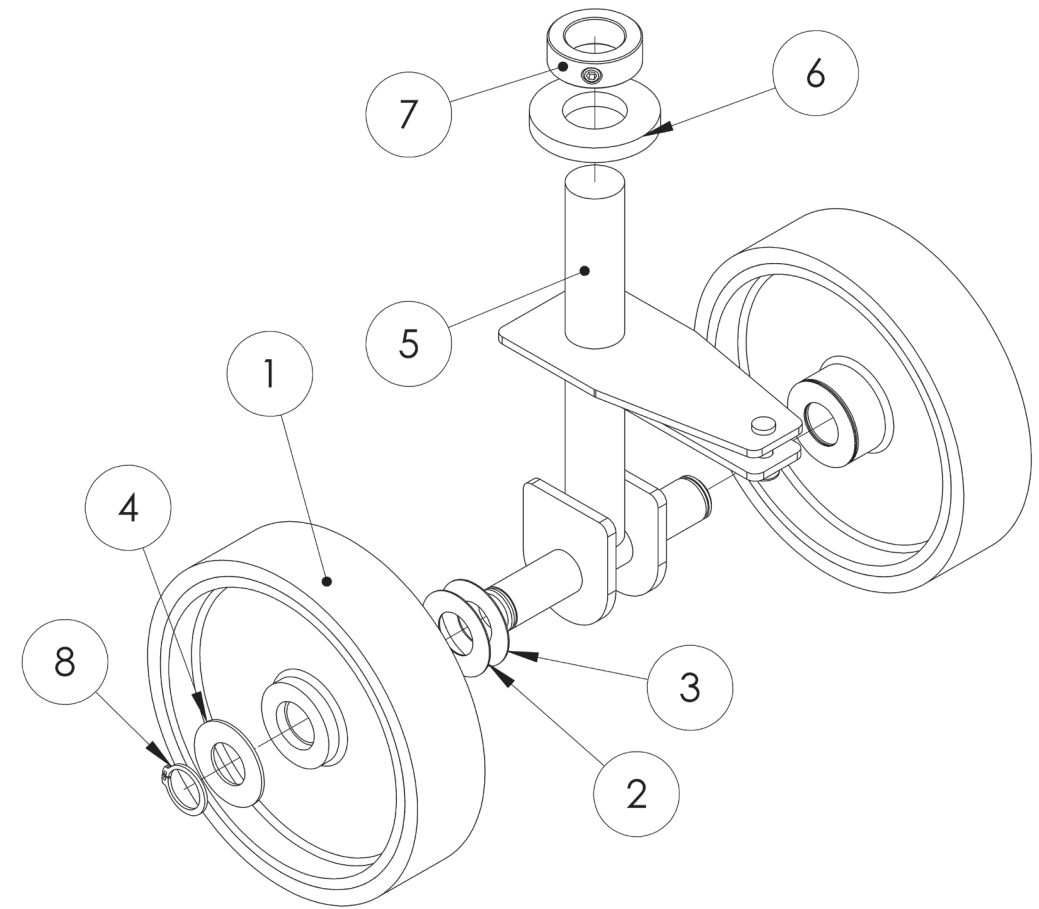


FIGURE 8: HB-1030 Caster Subparts

Item #	Part Number	Part Description	Notes	Qty	Superseded By
1	WHEEL-611-KIT	WHL,8X2 GREY UR,OFFSET		2	
2	WHEEL-609-P	WASHER,1.015 IDX2 ODX,.03 THK P		2	
3	WHEEL-609-SS	WASHER, 1.015ID,2OD,.03 THK SS		2	
4	WHEEL-603-2-P	WASHER,1.0 ID,2.0 OD,.075 THK		2	
5	PB-0021-P	BASE,CASTER FRONT		1	
6	HARD-615-2	THRUST BEARING,.38 THK,UHMW		1	
7	1021000102	SET COLLAR,1.25 ID		1	
8	HARD-021	RET RING 1.0		2	

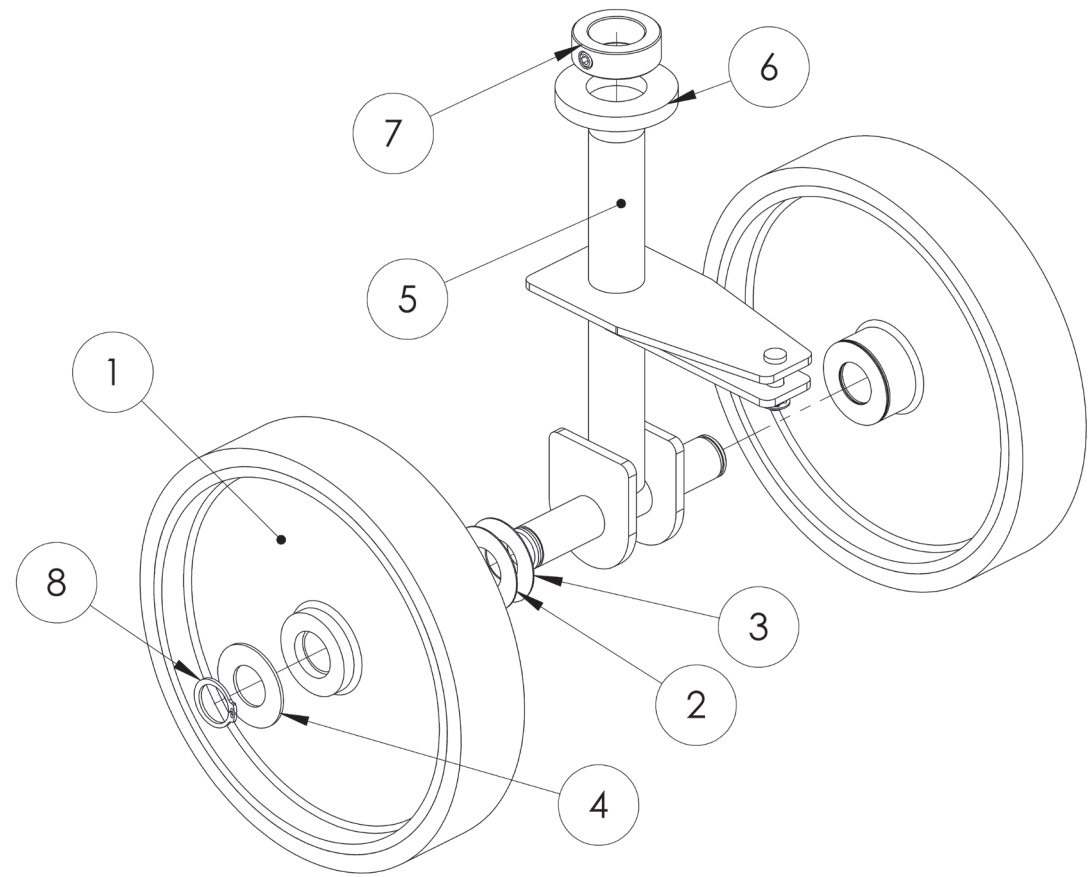


FIGURE 9: HB-1430 Caster Subparts

Item #	Part Number	Part Description	Notes	Qty	Superseded By
1	WHEE-604-KIT	WHL,10X2,GREY UR		2	
2	WHEE-609-P	WASHER,1.015 IDX2 ODX.03 THK P		2	
3	WHEE-609-SS	WASHER, 1.015ID,2.0OD,.03 THK SS		2	
4	WHEE-603-2-P	WASHER,1.0 ID,2.0 OD,.075 THK		2	
5	PB-0021-P	BASE,CASTER FRONT		1	
6	HARD-615-2	THRUST BEARING,.38 THK,UHMW		1	
7	1021000102	SET COLLAR,1.25 ID		1	
8	HARD-021	RET RING 1.0		2	

1.6 | FRONT WHEEL SUBPARTS

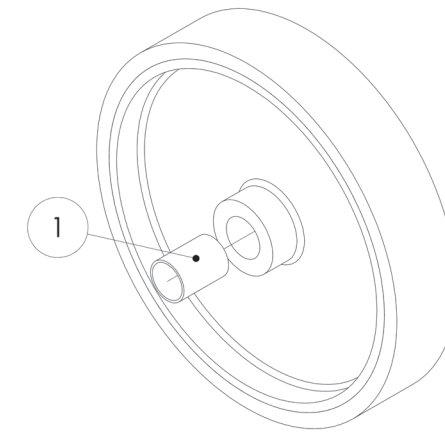


FIGURE 10: HB-1030/1430 Front Wheel Subparts

Item #	Part Number	Part Description	Notes	Qty	Superseded By
1	HARD-001-1	DU BEARING,1 ID X 1.5 L		1	



1.7 | DRIVE PARTS

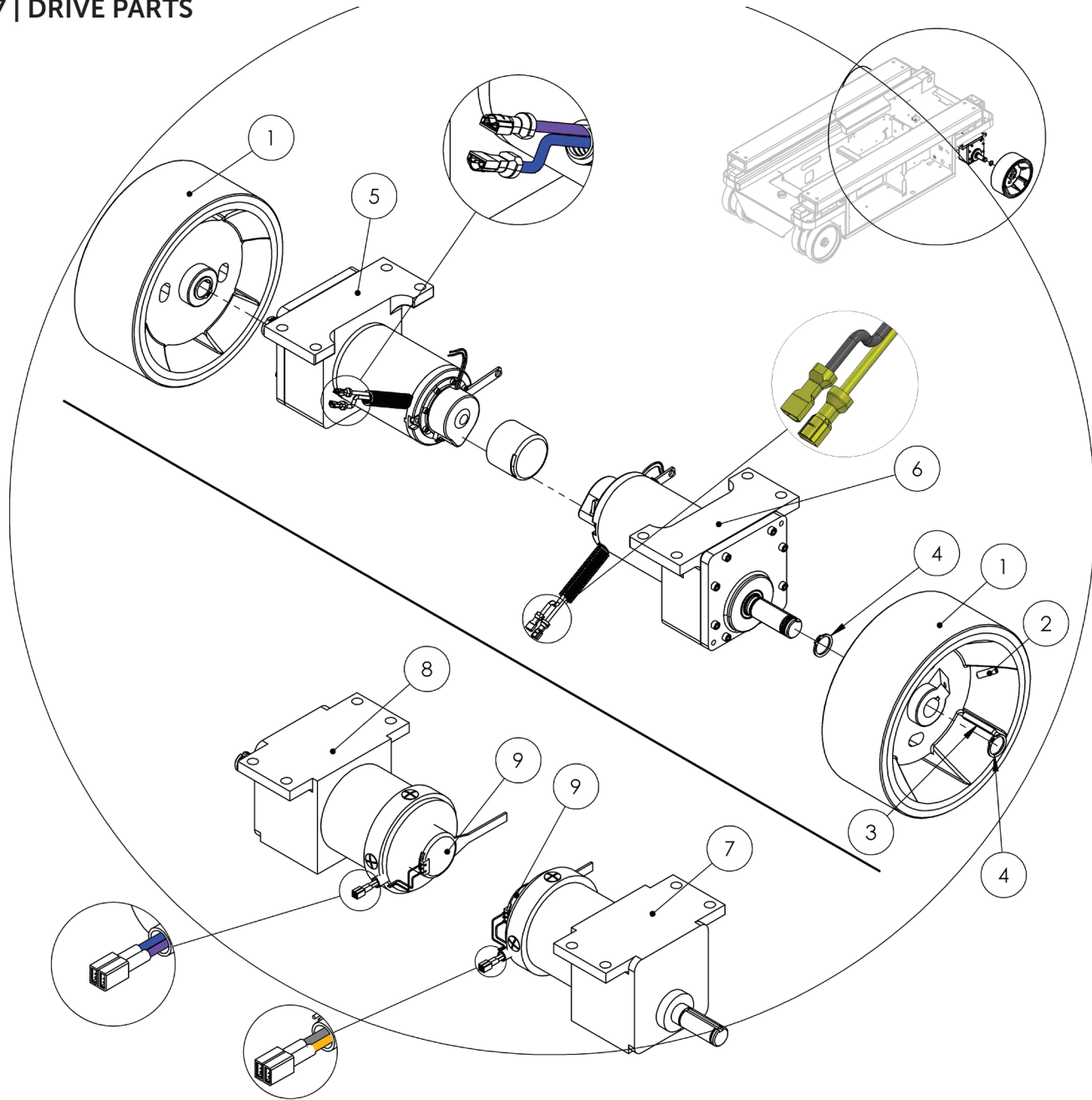
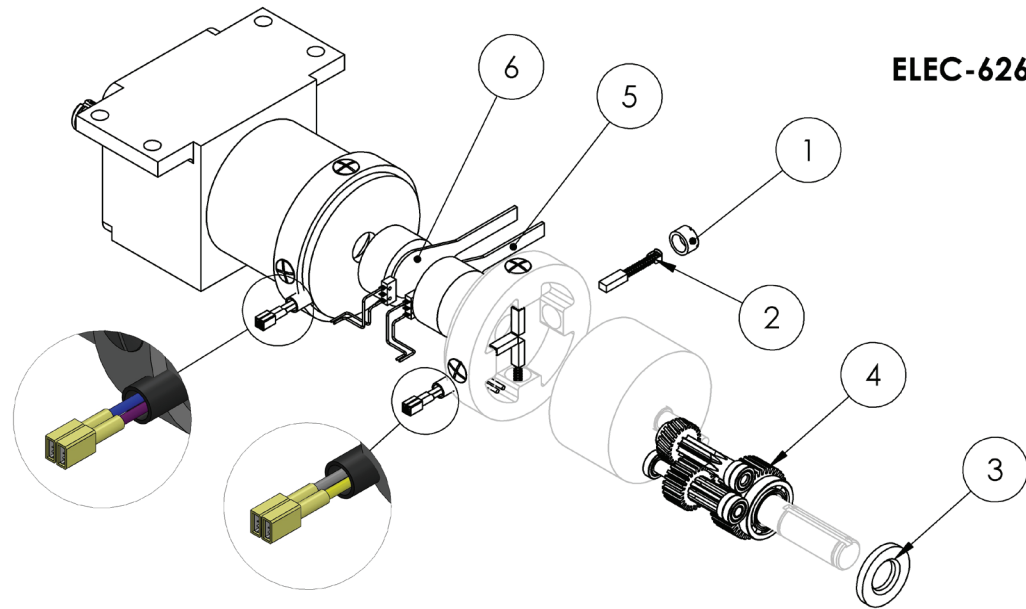


FIGURE 11: HB-1030/1430 Drive Parts

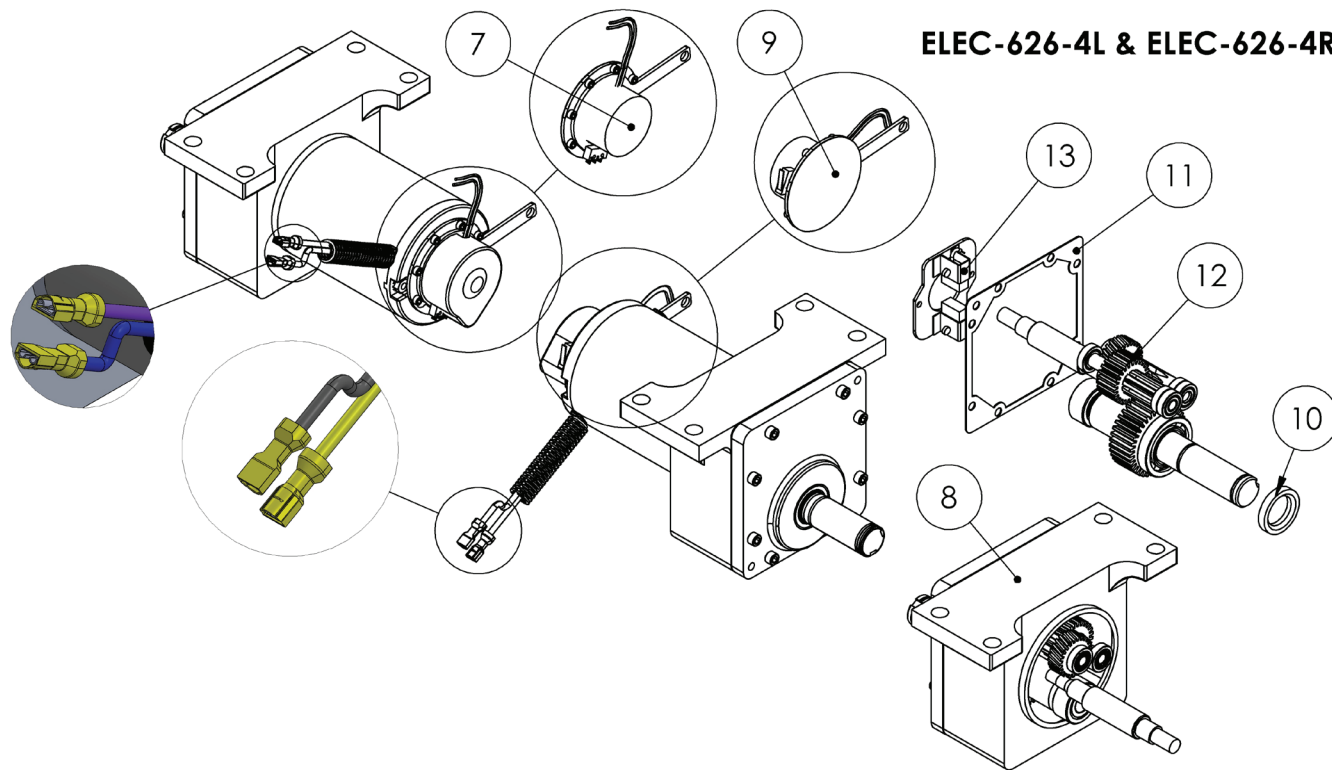
Item #	Part Number	Part Description	Notes	Qty	Superseded By
1	WHEE-600-1	WHL,10X4 GREY UR KW 1.0		2	
2	SCREW-2011	5/16-18 X 1 SS CUP PT SET SCRW		2	
3	HARD-157	KEY,0.25 X 0.25 X 2		2	
4	HARD-021	RET RING 1.0		4	
5	ELEC-626-4R-KIT	DRIVE MOTOR,24V ELEC,HB,DUM,R	BLUE/VIOLET LEADS; PRIMARILY ON D01-10114-19999 & D02-10491-19999, UNLESS DRIVES REPLACED	1	
6	ELEC-626-4L-KIT	,LDRIVE MOTOR,24V ELEC,HB,DUM	YELLOW/GREY LEADS; PRIMARILY ON D01-10114-19999 & D02-10491-19999, UNLESS DRIVES REPLACED	1	
7	ELEC-626-3L-KIT	DRIVE MOTOR,24V ELE,HB,EUC,L	YELLOW/GREY LEADS; PRIMARILY ON D01-1002-10212 & D02-10002-11341, UNLESS DRIVES REPLACED	1	ELEC-626-4L-KIT
8	ELEC-626-3R-KIT	DRIVE MOTOR,24V ELE,HB,EUC,R	BLUE/VIOLET LEADS; PRIMARILY ON D01-1002-10212 & D02-10002-11341, UNLESS DRIVES REPLACED	1	ELEC-626-4R-KIT
9	ELEC-627-COVER	COVER,VINYL		2	

1.8 | DRIVE SUBPARTS

**ELEC-626-3L & ELEC-626-3R**



**ELEC-626-4L & ELEC-626-4R**



Item #	Part Number	Part Description	Notes	Qty	Superseded By
1	ELEC-626-BRSHCP	DRIVE MOTOR BRUSH CAP	EUCLID: HOUSING WITH BLACK STRIP PRIMARILY ON D01-1002-10212 & D02-10002-11341, UNLESS DRIVES REPLACED	1	
2	ELEC-626-BRUSH	DRIVE MOTOR BRUSHES	EUCLID: HOUSING WITH BLACK STRIP PRIMARILY ON D01-1002-10212 & D02-10002-11341, UNLESS DRIVES REPLACED	1	
3	ELEC-626-3A	DRIVE MOTOR SHAFT SEAL,EUC	EUCLID: HOUSING WITH BLACK STRIP PRIMARILY ON D01-1002-10212 & D02-10002-11341, UNLESS DRIVES REPLACED	1	
4	ELEC-626-G	DRIVE MOTOR GEARS,HB,EUC	EUCLID: HOUSING WITH BLACK STRIP PRIMARILY ON D01-1002-10212 & D02-10002-11341, UNLESS DRIVES REPLACED	1	
5	ELEC-627-3L	DRIVE MOTOR BRAKE L,HB,EUC	EUCLID: HOUSING WITH BLACK STRIP PRIMARILY ON D01-1002-10212 & D02-10002-11341, UNLESS DRIVES REPLACED	1	
6	ELEC-627-3R	DRIVE MOTOR BRAKE R,HB,EUC	EUCLID: HOUSING WITH BLACK STRIP PRIMARILY ON D01-1002-10212 & D02-10002-11341, UNLESS DRIVES REPLACED	1	
7	ELEC-627-5R	DRIVE MOTOR BRAKE R,HB,DUM	DUMORE: HOUSING ALL SILVER; PRIMARILY ON D01-10114-19999 & D02-10491-19999, UNLESS DRIVES REPLACED	1	
8	ELEC-626-4C	DRIVE MOTOR GEARBOX,DUM	DUMORE: HOUSING ALL SILVER; PRIMARILY ON D01-10114-19999 & D02-10491-19999, UNLESS DRIVES REPLACED	1	
9	ELEC-627-5L	DRIVE MOTOR BRAKE L,HB,DUM	DUMORE: HOUSING ALL SILVER; PRIMARILY ON D01-10114-19999 & D02-10491-19999, UNLESS DRIVES REPLACED	1	
10	ELEC-626-4A	DRIVE MOTOR SHAFT SEAL,DUM	DUMORE: HOUSING ALL SILVER; PRIMARILY ON D01-10114-19999 & D02-10491-19999, UNLESS DRIVES REPLACED	1	
11	ELEC-626-4B	DRIVE MOTOR HOUSING GASKET,DUM	DUMORE: HOUSING ALL SILVER; PRIMARILY ON D01-10114-19999 & D02-10491-19999, UNLESS DRIVES REPLACED	1	
12	ELEC-626-4G	DRIVE MOTOR GEARS,HB,DUM	DUMORE: HOUSING ALL SILVER; PRIMARILY ON D01-10114-19999 & D02-10491-19999, UNLESS DRIVES REPLACED	1	
13	ELEC-626-4BRUSH	BRUSH KIT,DUMORE	DUMORE: HOUSING ALL SILVER; PRIMARILY ON D01-10114-19999 & D02-10491-19999, UNLESS DRIVES REPLACED	1	

FIGURE 12: HB-1030/1430 Drive Subparts

1.9 | DRIVE BRAKE SUBPARTS

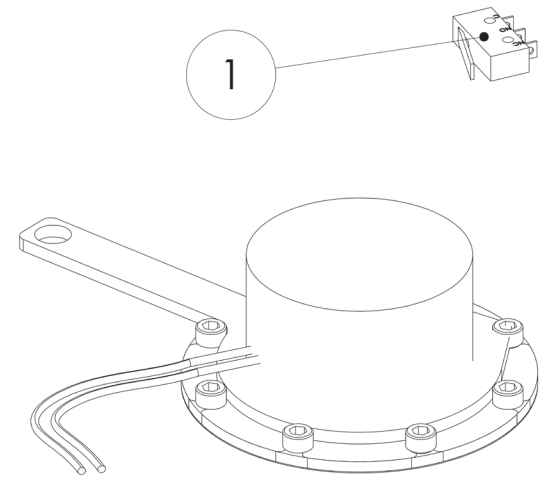


FIGURE 13: HB-1030/1430 Brake Left Subparts

Item #	Part Number	Part Description	Notes	Qty	Superseded By
1	ELEC-126-7-KIT	SWITCH,LIMIT,STRAIGHT LVR MICR	DUMORE: HOUSING ALL SILVER; PRIMARILY ON D01-10114-19999 & D02-10491-19999, UNLESS DRIVES REPLACED	1	
2	ELEC-627-4-KIT	SWITCH,LIMIT,BUTTON,MICRO	EUCLID: HOUSING WITH BLACK STRIP PRIMARILY ON D01-1002-10212 & D02-10002-11341, UNLESS DRIVES REPLACED	1	

1.10 | PUMP PARTS

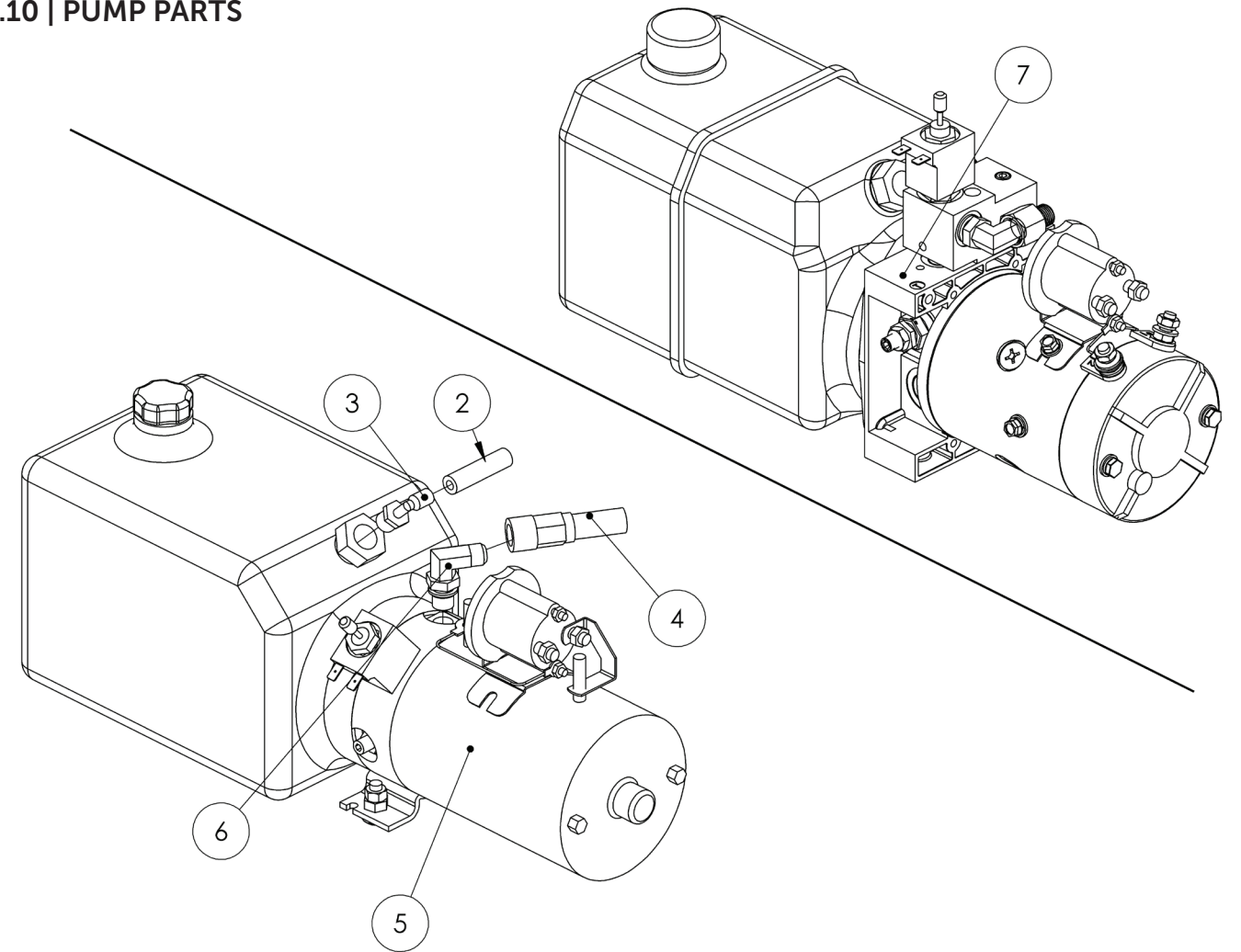


FIGURE 14: HB-1030 Pump Parts

Item #	Part Number	Part Description	Notes	Qty	Superseded By
1	HYDR-032	HYDRAULIC OIL	Not available as a replacement part. Replace with Flomite #150, Dexron II, Mobil-DTE 2 or equivalent.	1	
2	HYDR-022-3	LOW PRESSURE HOSE	Quantity in inches	102	
3	HYDR-019	FITTING,ELB,NPTM 3/8-1/4 PUSH		1	
4	HYDR-600	HOSE ASM,HB-2X		1	
5	HYDR-050-1	PUMP,24VDC,0.125,1.15,3.5	Superseded; Entire pump	1	HYDR-050-1-KIT
5	HYDR-050-1-KIT	PUMP,24VDC,0.125,1.15,3.5	Entire pump, includes fittings, may sub HYDR-050-KIT2	1	
6	HYDR-035	FITTING,ELB,JICM9/16-SAEORM#6		1	
6	HYDR-037	FITTING,ELB,JICM 9/16-NPTM 3/8	With KTI or serial numbers before D01-13100	1	
7	HYDR-050-1-KIT2	PUMP,24VDC,0.125,1.15,3.5,KTI	Entire pump, includes fittings, may sub HYDR-050-KIT	1	

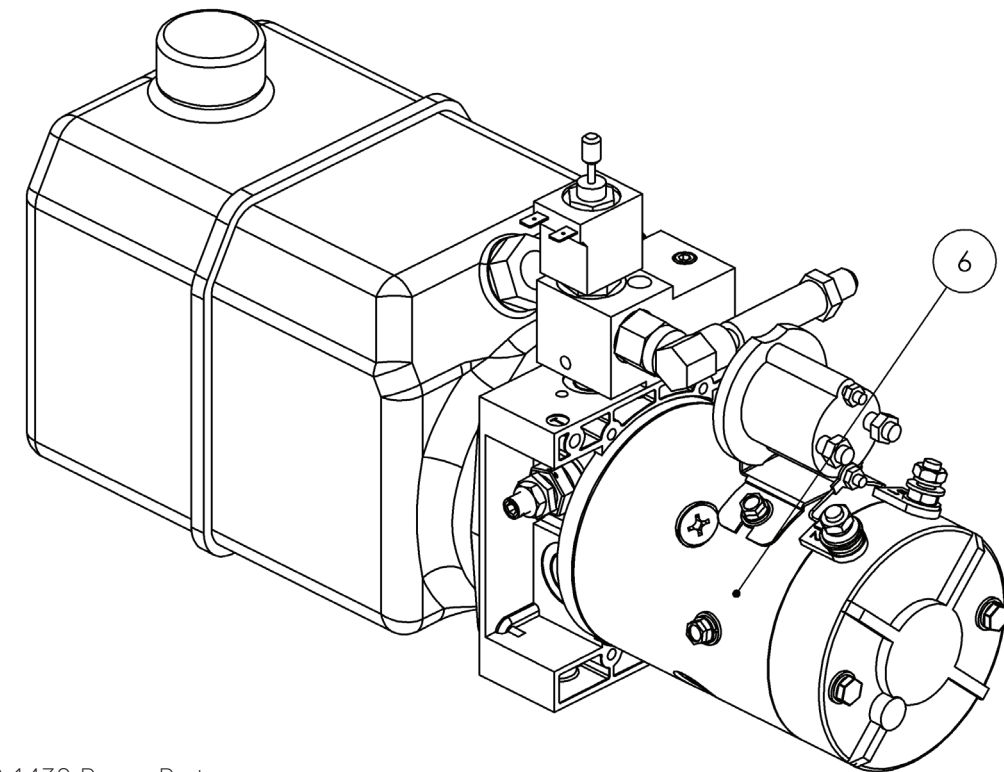
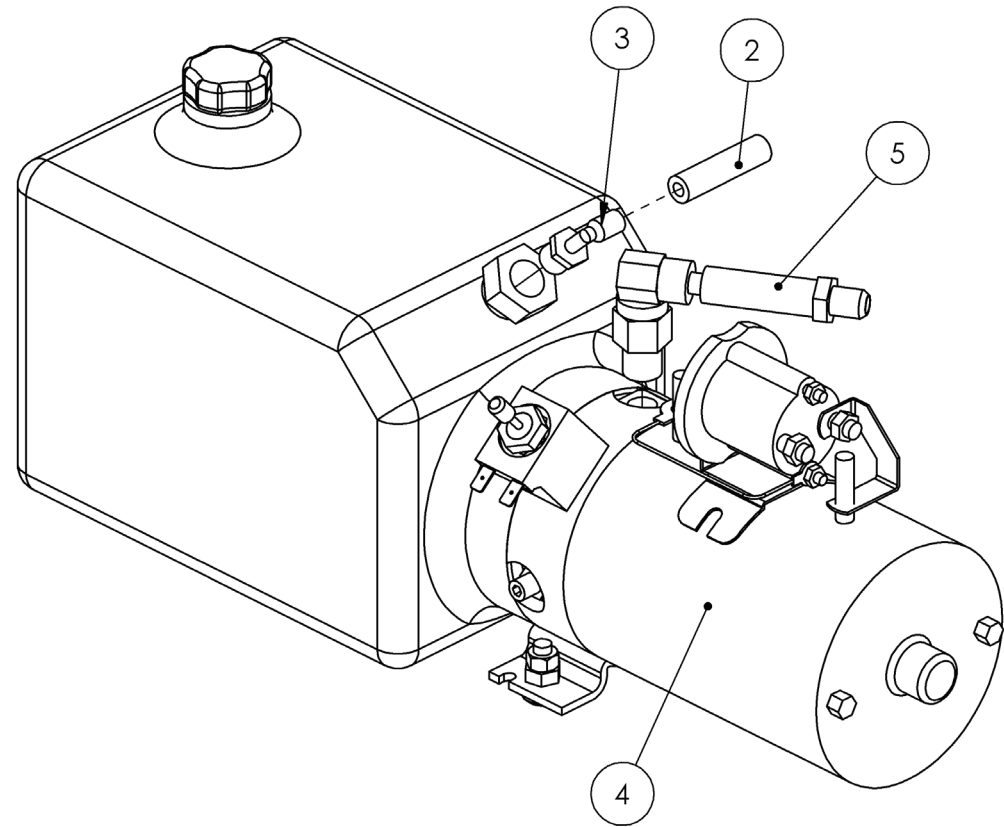
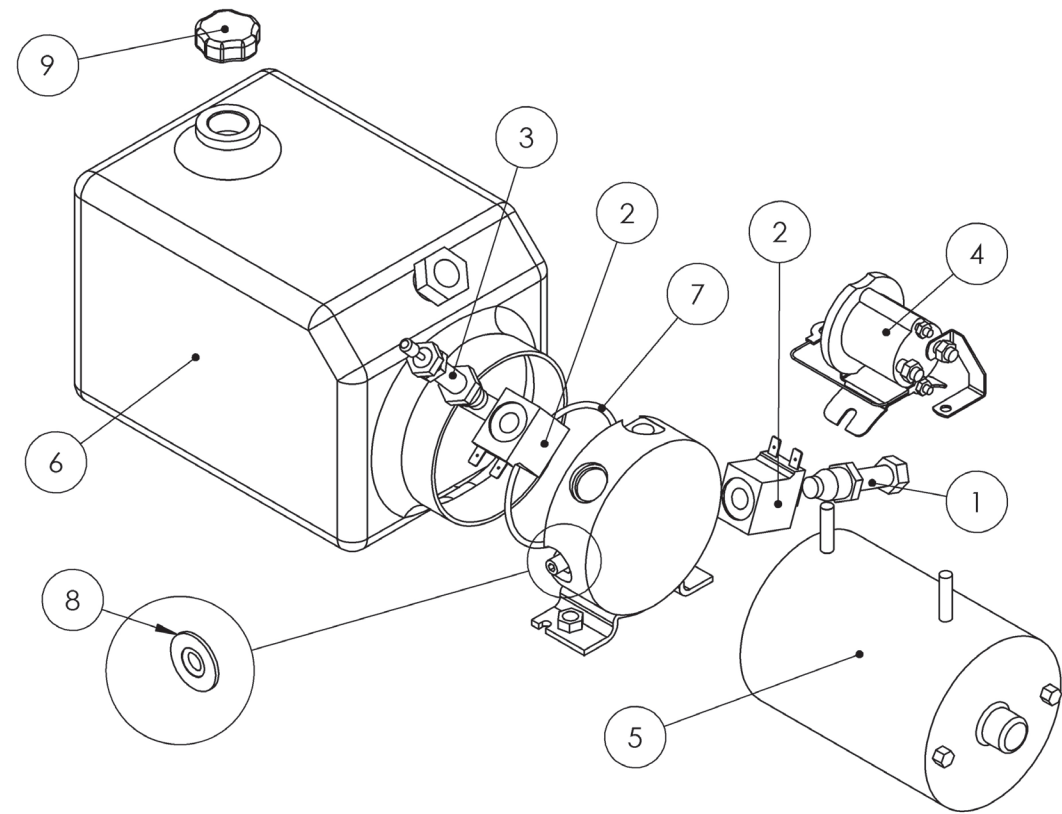


FIGURE 15: HB-1430 Pump Parts

Item #	Part Number	Part Description	Notes	Qty	Superseded By
1	HYDR-032	HYDRAULIC OIL	Not available as a replacement part. Replace with Flomite #150, Dexron II, Mobil-DTE 2 or equivalent 32 weight implement oil.	1	
2	HYDR-022-3	LOW PRESSURE HOSE	Quantity in inches	163	
3	HYDR-019	FITTING,ELB,NPTM 3/8-1/4 PUSH		1	
4	HYDR-050-111	PUMP,24VDC,0.125,1.15,3.5	Bucher	1	
4	HYDR-050-1-KIT2	PUMP,24VDC,0.125,1.15,3.5,KTI	Entire pump, includes fittings, may sub HYDR-050-KIT	1	
5	HYDR-600-1A	HOSE ASM,PRECUT HB1430 PMP END	With Bucher, serial numbers before D02-13820	1	
5	HYDR-600-1C	HOSE ASM,PRECUT HB1430 PMP END	With KTI or serial numbers after D02-13820	1	
6	HYDR-050-1	PUMP,24VDC,0.132,1.0,3.5	Superseded; Bucher	0	HYDR-050-1-KIT
6	HYDR-050-11	PUMP,24VDC,0.132,1.0,3.5	KTI	1	
6	HYDR-050-1-KIT	PUMP,24VDC,0.132,1.0,3.5	Entire pump, includes fittings, may sub HYDR-050-KIT2	1	

1.11 | PUMP SUBPARTS



Item #	Part Number	Part Description	Notes	Qty	Superseded By
1	HYDR-665	VALVE,NO,2W/2P,#8,UP		1	
2	HYDR-664	COIL,18V		2	
3	HYDR-663	VALVE,NC,2W/2P,#8,DWN,TURN,DEL	DOWN VALVE	1	
4	HYDR-666-1	SOLENOID,24V,ISOLATED,SPST	START SOLENOID	1	
5	HYDR-050-1MOTOR	PUMP MOTOR,24V,0.125 CIR		1	
6	HYDR-067	PUMP RESERVOIR,1.15 GAL		1	
7	HYDR-068	PUMP RESERVOIR O-RING		1	
8	HYDR-667	WASH,0.38 ID,0.75 OD,PRES SEAL		1	
9	HYDR-042	PUMP RESERVOIR CAP		1	
10	HYDR-103	PUMP RESERVOIR,1.0 GAL	IF KTI PUMP INSTALLED	1	
11	HYDR-105	PUMP MOTOR,24V,0.132 CIR	IF KTI PUMP INSTALLED	1	
12	HYDR-112	PUMP,MANIFOLD BLOCK	IF KTI PUMP INSTALLED	1	
13	HYDR-692	SOLENOID,24V,100 AMP	IF KTI PUMP INSTALLED	1	

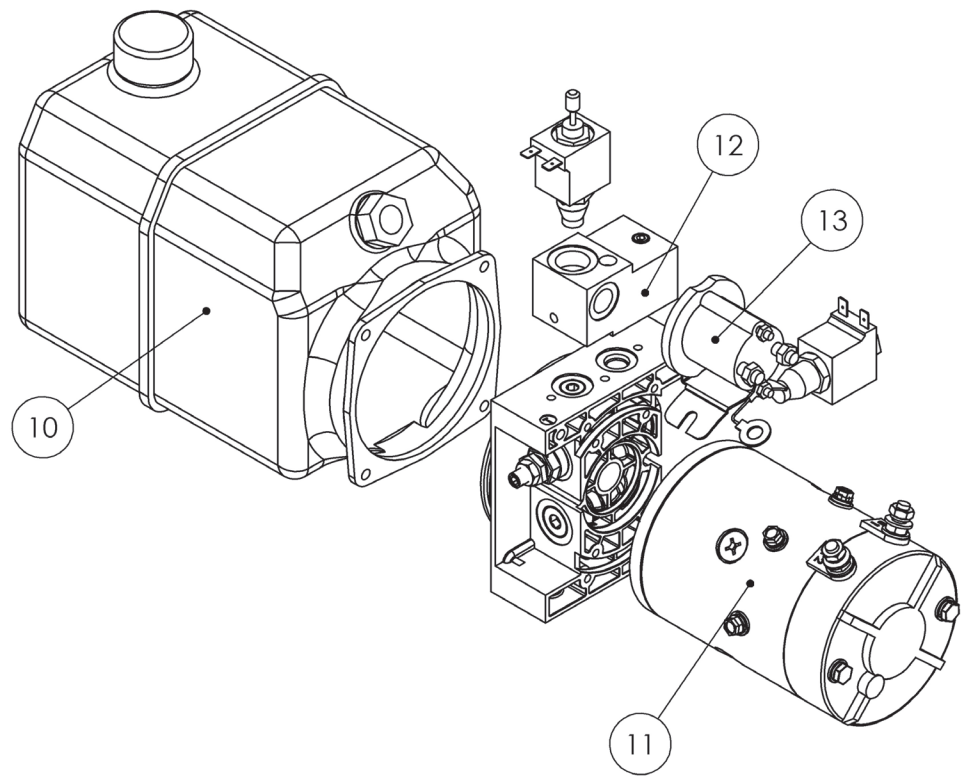
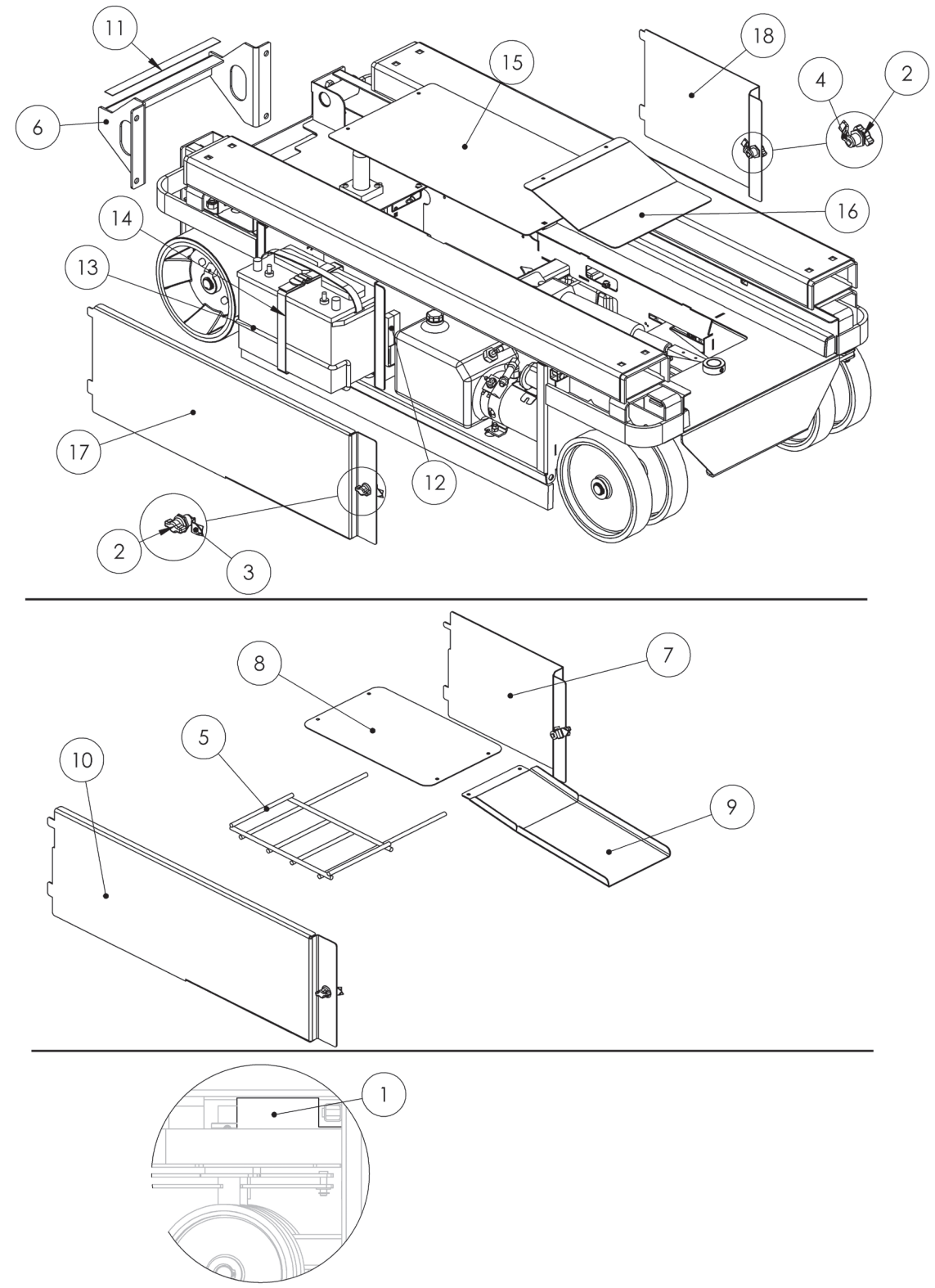


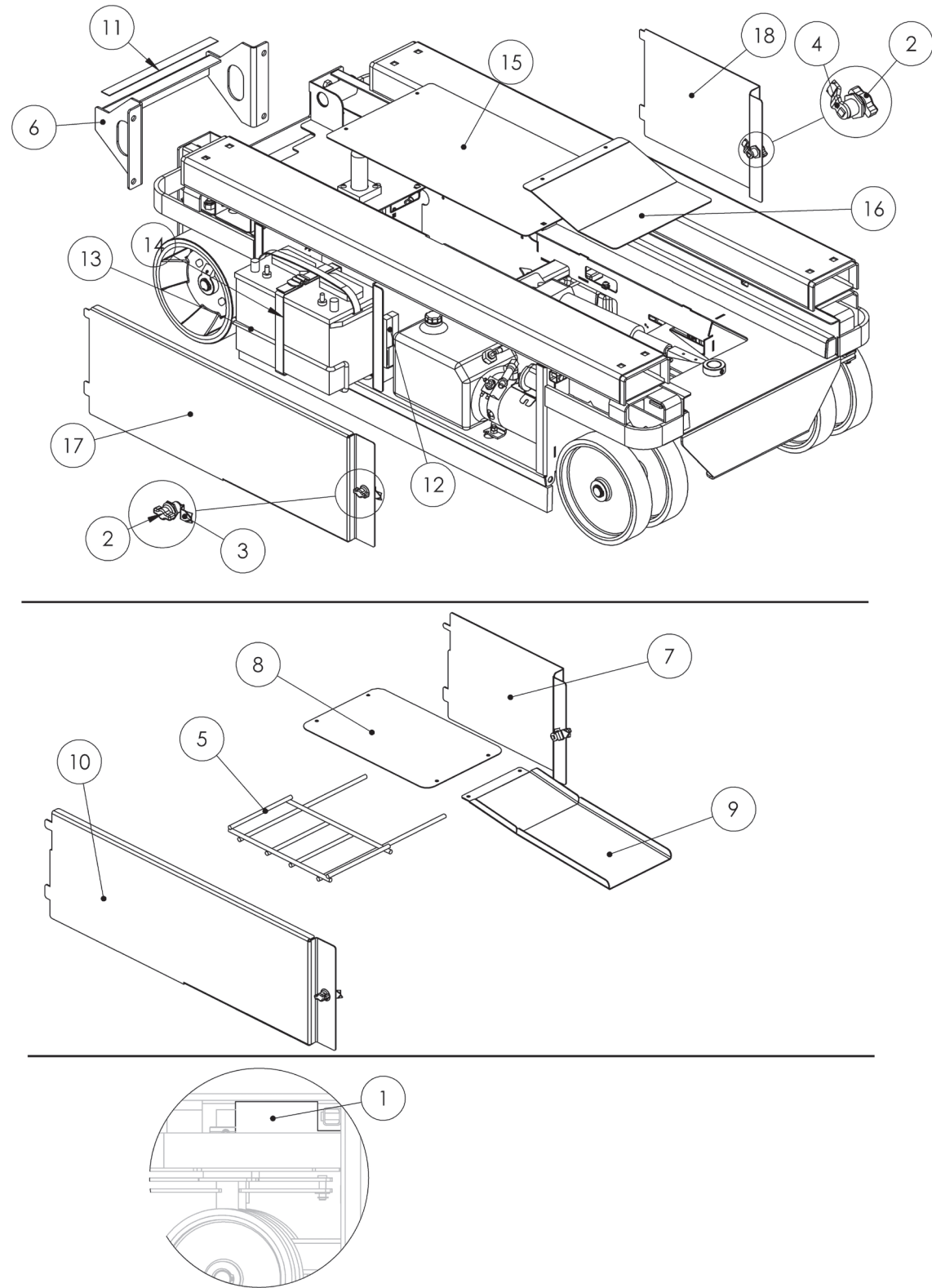
FIGURE 16: HB-1030/1430 Pump Subparts

1.12 | MISCELLANEOUS PARTS



Item #	Part Number	Part Description	Notes	Qty	Superseded By
1	112-01-001-03-K	BASE,CASTER HUB SUPPORT	D01-10120-D01-10930	1	
2	HARD-633B	CABINET LATCH HANDLE		2	
3	HARD-633C	CABINET LATCH CAM		1	
4	HARD-633D	CABINET LATCH CAM		1	
4	HARD-633E	CABINET LATCH CAM	Superseded; Obsolete	0	HARD-633D
5	HB-0001-P	BASE,BATT TRAY	D110002-D110005	1	
6	LAS-M100-E-PC	BASE,ACCESS STEP	Not required on HB-1030	1	
7	LAS-M226-KIT	COVER, SIDE CTL	D110002-D110005	1	
8	LAS-M230-PC	COVER,REAR	D110002-D110005; 10 in. wide x 16.19 long	1	
9	LAS-M231-PC	COVER,FRONT	D110002-D110005; 18 in. long, 8 in. wide	1	
10	LAS-M246-KIT	COVER,SIDE PUMP	D110002-D110005	1	
11	MISC-030-01-KIT	ANTI-SLIP TAPE,1, 13.75 LENGTH		1	
12	HB-M215-P	MAINT LOCK PIN (SQUARE)		2	
13	1020123502	BASE,BATT TRAY	D01-10120-D01-19999	2	
14	HARD-054	BATTERY STRAP/BUCKLE		2	
15	1020500101	COVER,BASE TOP	D01-10120-D01-19999	1	
16	1020500201	COVER,FRONT	D01-10120-D01-19999	1	
17	1020500401-KIT	COVER,PUMP SIDE	D01-10120-D01-19999	1	
18	1020500301-KIT	COVER,BATT CONTROL SIDE	D01-10120-D01-19999	1	

FIGURE 17: HB-1030 BASE MISCELLANEOUS PARTS



Item #	Part Number	Part Description	Notes	Qty	Superseded By
1	112-01-001-03-K	BASE,CASTER HUB SUPPORT	D02-10167-D02-10162	1	
2	HARD-633B	CABINET LATCH HANDLE		2	
3	HARD-633C	CABINET LATCH CAM		1	
4	HARD-633D	CABINET LATCH CAM		1	
4	HARD-633E	CABINET LATCH CAM	Superseded: Obsolete	0	HARD-633D
5	HB-0001-P	BASE,BATT TRAY	D210002-D210009	1	
6	LAS-M100-E-PC	BASE,ACCESS STEP		1	
7	LAS-M226-KIT	COVER, SIDE CTL	D210002-D210009	1	
8	LAS-M230-PC	COVER,REAR	D210002-D210009; 10 in. wide x 16.19 long	1	
9	LAS-M231-PC	COVER,FRONT	D210002-D210009; 18 in. long, 8 in. wide	1	
10	LAS-M246-KIT	COVER,SIDE PUMP	D210002-D210009	1	
11	MISC-030-01-KIT	ANTI-SLIP TAPE,1, 13.75 LENGTH		1	
12	HB-M215-P	MAINT LOCK PIN (SQUARE)		2	
13	1020123502	BASE,BATT TRAY	D02-10167-D02-19999	2	
14	HARD-054	BATTERY STRAP/BUCKLE		2	
15	1020500101	COVER,BASE TOP	D02-10167-D02-19999	1	
16	1020500201	COVER,FRONT	D02-10167-D02-19999	1	
17	1020500401-KIT	COVER,PUMP SIDE	D02-10167-D02-19999	1	
18	1020500301-KIT	COVER,BATT CONTROL SIDE	D02-10167-D02-19999	1	

FIGURE 18: HB-1430 Base Miscellaneous Parts

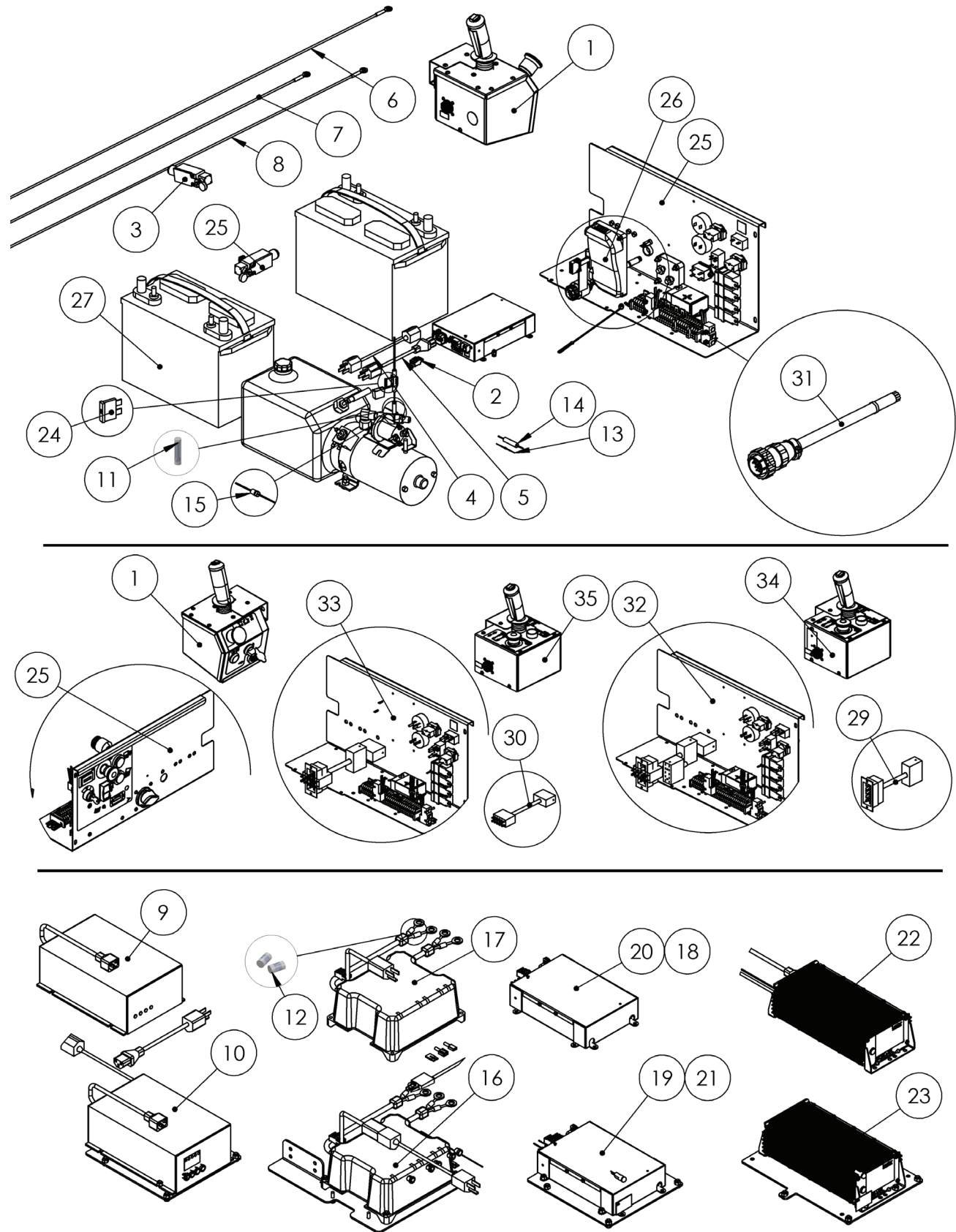


FIGURE 19: HB-1030 Controls/Electrical Parts

Item #	Part Number	Part Description	Notes	Qty	Superseded By
1	112-21-204-50	ASM,CTL UPR	D01-13000-D01-29999	1	
2	112-21-233-50-K	CTL,CHR INTERLOCK KIT	FOR USE WITH ELEC-770 OR ELEC-771	1	
3	ELEC-123-5	SWITCH,LIMIT,ROT LVR,NO/NC PO		2	
4	ELEC-639	CORD,NEMA 5-15P/5-16R,6.0	12INCH CHARGER PIGTAIL	1	
5	ELEC-639-3	CORD,NEMA 515/IEC C13,36	36 INCH LENGTH CHARGER CORD	1	
6	ELEC-641A	CABLE,6GA,BLACK,63,B/B		1	
7	ELEC-641C	CABLE,6GA,RED,50,B/R		1	
8	1002101798	CABLE,6GA,RED,54,R/R		1	
9	ELEC-645	CHARGER, 24V	SIGNET	1	
10	ELEC-645-KITB	CHARGER,24V,11A,RETROFIT	RETROFIT TO ELEC-645	1	
11	ELEC-670-2	FUSE 20 AMP AGC	D110002-D110005; D01-10010-D01-12999	1	
12	ELEC-670-6	FUSE 30 AMP,PCS		2	
13	ELEC-686	DIODE		1	
14	ELEC-687	4-OHM RESISTOR		1	
15	ELEC-688	DIODE TVS 1.5KE		1	
16	ELEC-747	CHARGER,24V	PCS	1	
17	ELEC-747-KITA	CHARGER,24V	RETROFIT TO ELEC-747	1	
18	ELEC-770	CHARGER,24V,12A AGM LES PRIME	FOR AGM BATT	1	
19	ELEC-770-KITA	CHARGER,24V,LES PRI RETRO LGS2	RETROFIT TO ELEC-770, FOR AGM BATT	1	
20	ELEC-771	CHARGER,24V,12A WET CELL LES PRIME	FOR WET CELL BATT	1	
21	ELEC-771-KITA	CHARGER,24V,12A LES PRI RETRO LGS2	RETROFIT TO ELEC-771, FOR WET BATT	1	
22	ELEC-772	CHARGER,24V,25A,LES SLM		1	
23	ELEC-772-KITA	CHARGER,24V,LES SLM RETRO LGS2	RETROFIT TO ELEC-772	1	
24	ELEC-959	FUSE, 20A ATC	D01-13000-D01-29999	1	
25	112-21-205-50	ASM,CTL LWR	D01-13000-D01-29999	1	
26	SUB 903	BOARD,DRIVE CTL (HB2)		1	
27	N/A	BATTERY,12V,GR27 HD DEEP CYCLE	NOT SOLD FOR REPLACEMENT. REPLACE WITH GROUP 27, 12-VOLT DEEP CYCLE OR AGM BATTERY WEIGHING AT LEAST 45 LB.	2	
28	SUB A13	CTL,WIRE HARNESS,MAIN 10C/21FT	Superseded; D110010-D110096OBSOLETE	1	SUB A13-3
29	SUB A13-101	CTL,WIRE HARNESS,MAIN 10C/21FT	D110002-D110005	1	
30	SUB A13-3	CTL,WIRE HARNESS,MAIN 10C/27FT	D01-10010-D01-10096	1	
31	SUB A13-4	MAIN CABLE ASSEMBLY	D01-10097-D01-29999	1	
32	SUB A8-001	LWR CONTROLS (ANSI STYLE HB2)	D110002-D110005; D01-10010-D01-12999	1	
33	SUB A8-002	LWR CONTROLS (ANSI STYLE HB2)	D01-10097-D01-12999	1	
34	SUB A9-001	ASM,CTL UPR (HB ANSI)	D110002-D110005; D01-10010-D01-12999	1	
35	SUB A9-002	ASM,CTL UPR (HB ANSI)	D01-10097-D01-12999	1	
36	WD-112-20-216-50	WD,HBLG S2.6	D01-13000-D01-29999; WIRING DIAGRAM	1	
37	WD-HB2	WIRING DIAGRAM - HB2	D110002-D110005; D01-10010-D01-12999; WIRING DIAGRAM	1	
38	WS-112-20-216-50	ELEC SCH,HBLG S2.6	D01-13000-D01-29999; ELECTRICAL SCHEMATIC	1	
39	WS-HB2	ELEC SCH,HB2	D110002-D110005; D01-10010-D01-12999; ELECTRICAL SCHEMATIC	1	



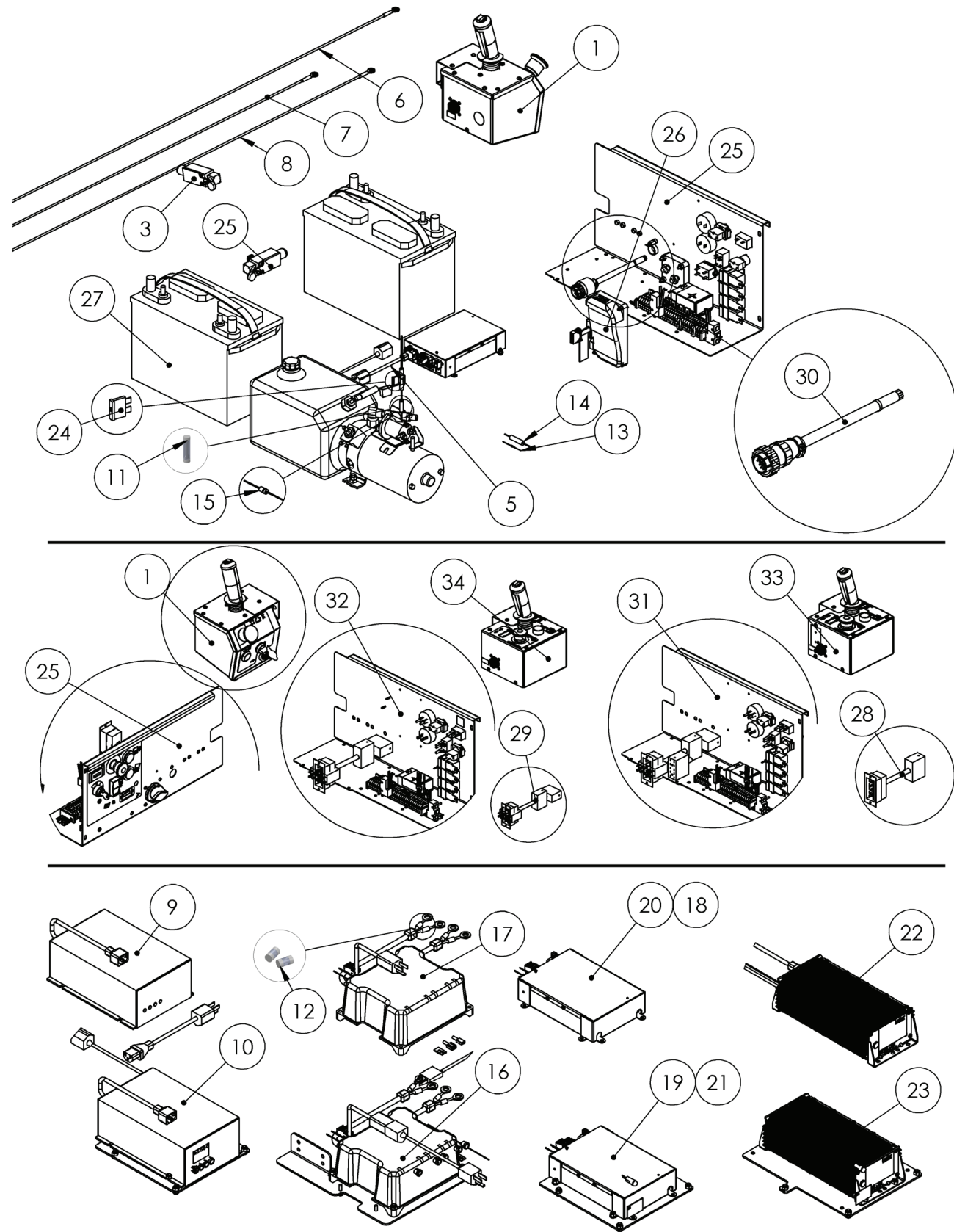


FIGURE 20: HB-1430 Controls/Electrical Parts

Item #	Part Number	Part Description	Notes	Qty	Superseded By
1	112-21-204-50	ASM,CTL UPR	D02-13000-D02-29999	1	
2	112-21-233-50-K	CTL,CHR INTERLOCK KIT	USE WITH ELEC-770 OR ELEC-771	1	
3	ELEC-123-5	SWITCH,LIMIT,ROT LVR,NO/NC PO		2	
4	ELEC-639	CORD,NEMA 5-15P/5-16R,6,0	6 INCH CHARGER PIGTAIL	1	
5	ELEC-639-3	CORD,NEMA 515/IEC C13,36	36 INCH LENGTH CHARGER CORD	1	
6	ELEC-641A	CABLE,6GA,BLACK,63,B/B		1	
7	ELEC-641C	CABLE,6GA,RED,50,B/R		1	
8	1002101798	CABLE,6GA,RED,54,R/R		1	
9	ELEC-645	CHARGER, 24V	SIGNET	1	
10	ELEC-645-KITB	CHARGER,24V,11A,RETROFIT	RETROFIT TO ELEC-645	1	
11	ELEC-670-2	FUSE 20 AMP AGC	D210002-D210009; D02-10010-D02-12999	1	
12	ELEC-670-6	FUSE 30 AMP,PCS		2	
13	ELEC-686	DIODE		1	
14	ELEC-687	4-OHM RESISTOR		1	
15	ELEC-688	DIODE TVS 1.5KE		1	
16	ELEC-747	CHARGER,24V	PCS	1	
17	ELEC-747-KITA	CHARGER,24V	RETROFIT TO ELEC-747	1	
18	ELEC-770	CHARGER,24V,12A AGM LES PRIME	FOR AGM BATT	1	
19	ELEC-770-KITA	CHARGER,24V,12A AGM LES PRIME	RETROFIT TO ELEC-770, FOR AGM BATT	1	
20	ELEC-771	CHARGER,24V,12A WET CELL LES PRIME	FOR WET CELL BATT	1	
21	ELEC-771-KITA	CHARGER,24V,12A LES PRI RETRO LGS2	RETROFIT TO ELEC-771, FOR WET BATT	1	
22	ELEC-772	CHARGER,24V,25A,LES SLM		1	
23	ELEC-772-KITA	CHARGER,24V,LES SLM RETRO LGS2	RETROFIT TO ELEC-772	1	
24	ELEC-959	FUSE, 20A ATC	D02-13000-D02-29999	1	
25	112-21-205-50	ASM,CTL LWR	D02-13000-D02-29999	1	
26	SUB 903	BOARD,DRIVE CTL (HB2)		1	
27	N/A	BATTERY,12V,GR27 HD DEEP CYCLE	NOT SOLD FOR REPLACEMENT. REPLACE WITH GROUP 27, 12-VOLT DEEP CYCLE OR AGM BATTERY WEIGHING AT LEAST 45 LB.	2	
28	SUB A13-102	CTL,WIRE HARNESS,MAIN 10C/27FT	D210002-D210009	1	
29	SUB A13-3	CTL,WIRE HARNESS,MAIN 10C/27FT	D02-10010-D02-10468	1	
30	SUB A13-4	MAIN CABLE ASSEMBLY	D02-10469-D02-29999	1	
31	SUB A8-001	LWR CONTROLS (ANSI STYLE HB2)	D210002-D210009; D02-10010-D02-12999	1	
32	SUB A8-002	LWR CONTROLS (ANSI STYLE HB2)	D02-10469-D02-29999	1	
33	SUB A9-001	ASM,CTL UPR (HB ANSI)	D210002-D210009; D02-10010-D02-12999	1	
34	SUB A9-002	ASM,CTL UPR (HB ANSI)	D02-10469-D02-29999	1	
35	WD-112-20-216-50	WD,HBLG S2.6	D02-13000-D02-29999; WIRING DIAGRAM	1	
36	WD-HB2	WIRING DIAGRAM - HB2	D210002-D210009; D02-10010-D02-12999; WIRING DIAGRAM	1	
37	WS-112-20-216-50	ELEC SCH,HBLG S2.6	D02-13000-D02-29999; ELECTRICAL SCHEMATIC	1	
38	WS-HB2	ELEC SCH,HB2	D210002-D210009; D02-10010-D02-12999; ELECTRICAL SCHEMATIC	1	

2.1 | MAIN CABLE SUBPARTS

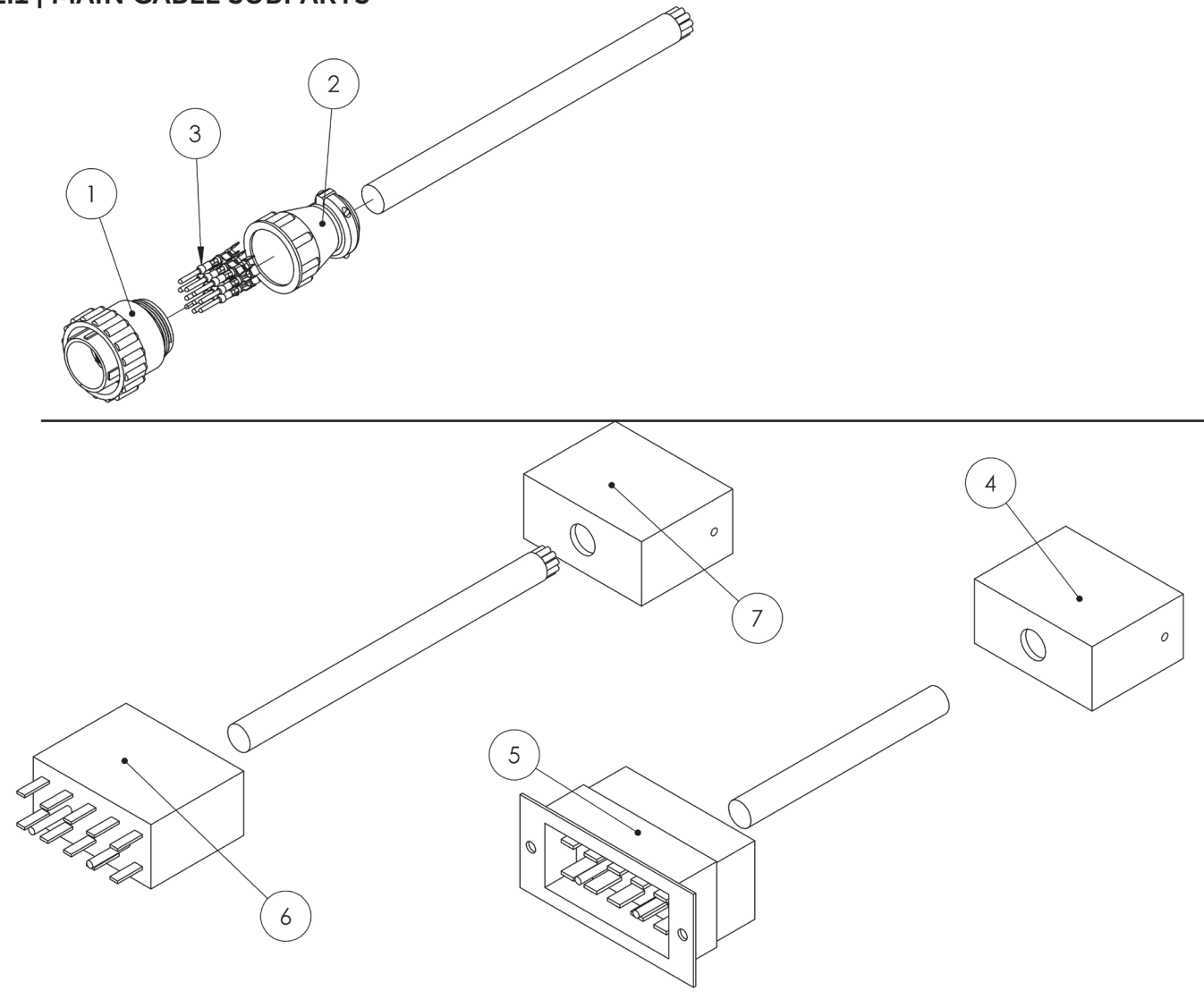


FIGURE 21: HB-1030/HB-1430 Main Cable

HB-1030

Item #	Part Number	Part Description	Notes	Qty	Superseded By
1	ELEC-749	CONN,CPC,PLUG,14 POS	D02-10469-D02-19999	1	
2	ELEC-750	CABLE CLAMP,CPC,BACK SHELL	D02-10469-D02-19999	1	
3	ELEC-752	CONTACT PIN,CPC,14-18GA TIN	D02-10469-D02-19999	12	
4	ELEC-621	SOCKET,10C,CABLE MNT	D02-10010-D02-10468	1	
5	ELEC-620	PLUG,10C,PANEL MNT	D02-10010-D02-10468	1	
6	ELEC-622	PLUG,10C,CABLE MNT	D02-10002-D02-10009	1	
7	ELEC-621	SOCKET,10C,CABLE MNT	D02-10002-D02-10009	1	

HB-1430

Item #	Part Number	Part Description	Notes	Qty	Superseded By
1	ELEC-749	CONN,CPC,PLUG,14 POS	D01-10097-D01-19999	1	
2	ELEC-750	CABLE CLAMP,CPC,BACK SHELL	D01-10097-D01-19999	1	
3	ELEC-752	CONTACT PIN,CPC,14-18GA TIN	D01-10097-D01-19999	12	
4	ELEC-621	SOCKET,10C,CABLE MNT	D01-10002-D01-10005	1	
5	ELEC-620	PLUG,10C,PANEL MNT	D01-10002-D01-10005	1	
6	ELEC-622	PLUG,10C,CABLE MNT	D01-10010-D01-10096	1	
7	ELEC-621	SOCKET,10C,CABLE MNT	D01-10010-D01-10096	1	

2.2 | UPPER CONTROL PARTS

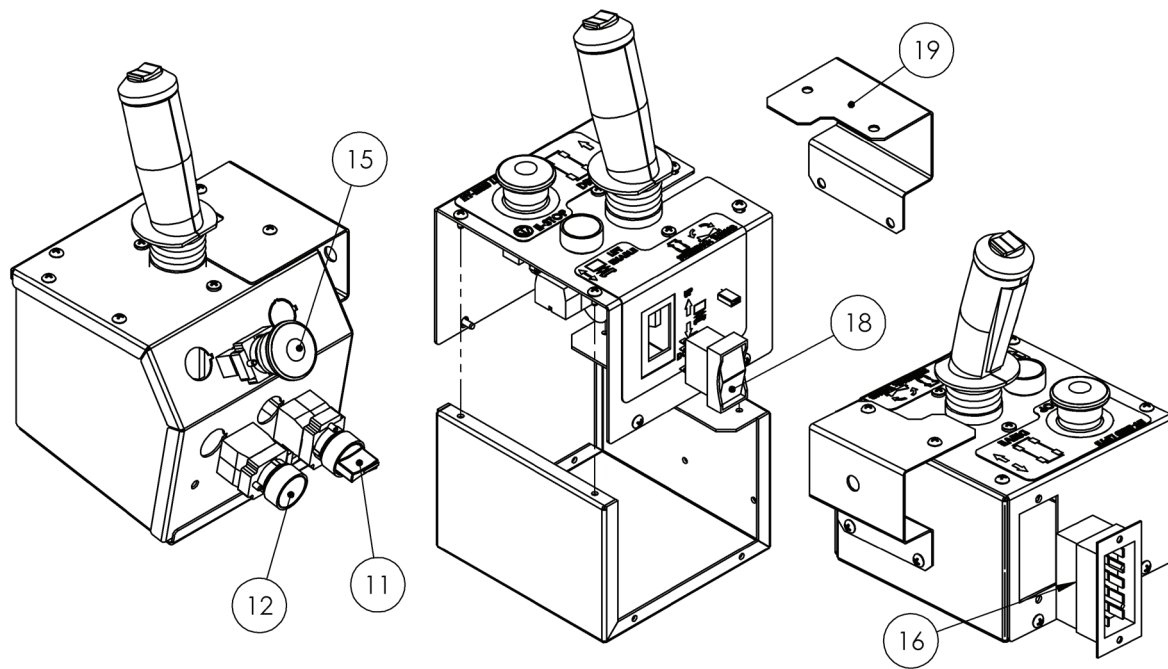
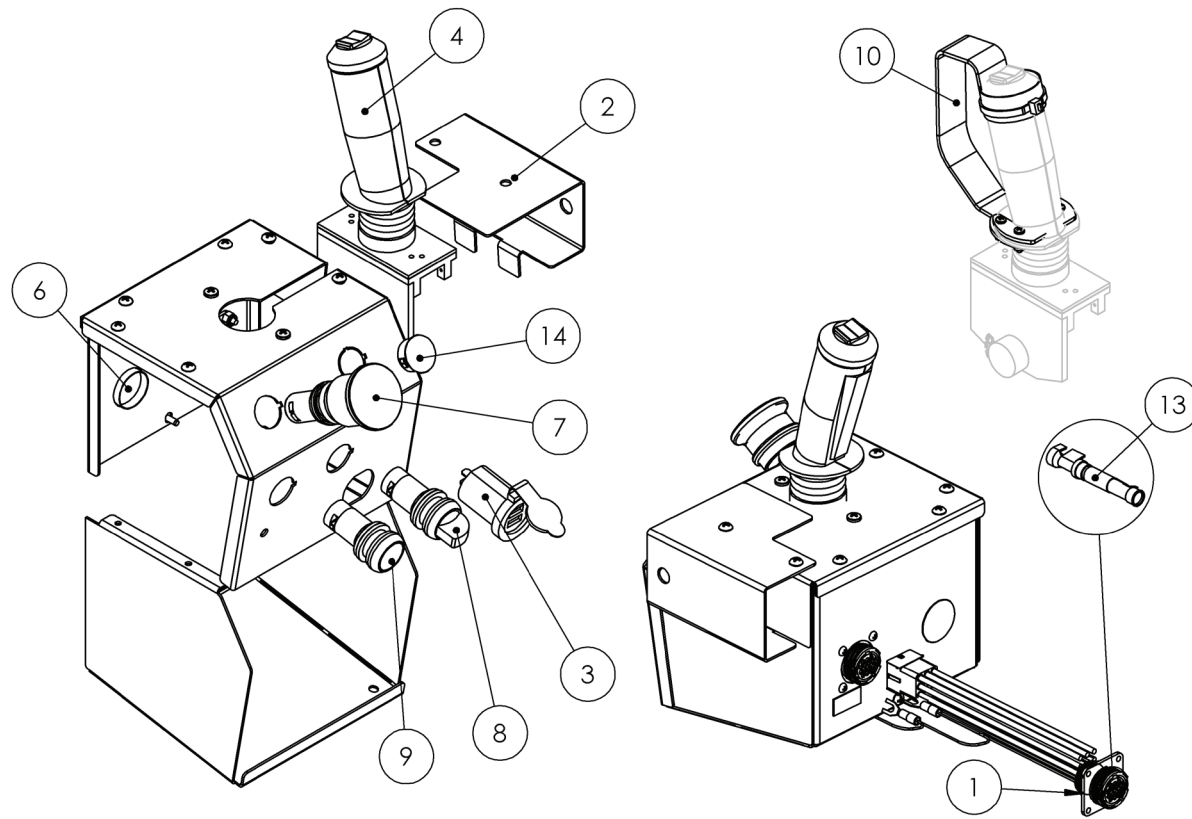


FIGURE 22: HB-1430/HB-1030 Upper Control Parts

Item #	Part Number	Part Description	Notes	Qty	Superseded By
1	112-21-012-50	CTL,WIRE HARNESS,UPR CTL	D01-10097-D01-29999; D02-10469-D02-29999	1	
2	112-03-204-01	RAIL,CTL MNT CHNL	D01-13000-D01-29999;D02-13000-D02-29999	1	
3	ELEC-892	POWER PORT,USB 12/24V	D01-13000-D01-29999;D02-13000-D02-29999	1	
4	ELEC-601	JOYSTICK		1	
5	WD-112-21-204-50	WD,UPR CTL HBLG	D01-13000-D01-29999;D02-13000-D02-29999; WIRING DIAGRAM	2	
6	HARD-726	PLUG,1.09 DIA,BLACK	D01-13000-D01-29999;D02-13000-D02-29999	1	
7	ELEC-065	BUTTON,TWIST REL. RED E-STOP	D01-13178-D01-29999,D02-14590-D02-29999; FOR BEST RESULTS, USE DIELECTRIC GREASE AT INSTALLATION	1	
8	ELEC-066	SWITCH,ROTARY MOM. ,3-POS	D01-13178-D01-29999,D02-14590-D02-29999; FOR BEST RESULTS, USE DIELECTRIC GREASE AT INSTALLATION	1	
9	ELEC-067	SWITCH,PUSH BTN,GREEN	D01-13178-D01-29999,D02-14590-D02-29999; FOR BEST RESULTS, USE DIELECTRIC GREASE AT INSTALLATION	1	
10	112-21-216-50-K	ASM,JOYSTICK GUARD	OPTIONAL FIELD INSTALL KIT	1	
11	ELEC-002A-KIT2	SWITCH,ROTARY MOMENTARY,NO/NO	D01-13000-D01-29999;D02-13000-D02-29999	1	
12	ELEC-602-KIT2	BUTTON,PUSH GREEN,NO/NC		1	
13	ELEC-753	CONTACT, SOCKET 20-24 GA	D01-10097-D01-29999,D02-10469-D02-29999	10	
14	HARD-706	PLUG,0.88 DIA,BLACK	D01-13000-D01-29999;D02-13000-D02-29999	1	
15	ELEC-071-KIT	EMERGENCY STOP BUTTON		1	
16	ELEC-620	PLUG,10C,PANEL MNT	D110002-D110005,D01-10010-D01-10096; D210002-D210009, D02-10110-D02-10468	1	
17	WD-SUB A9-001	WD,UPR CTL HBLGS2	D110002-D110005,D01-10010-D01-10096; D210002-D210009, D02-10110-D02-10468; WIRING DIAGRAM	1	
18	ELEC-133B	SWITCH,ROCKER DPDT	D110002-D110005,D01-10010-D01-12999; D210002-D210009, D02-10110-D02-12999	1	
19	LAS-M087-PCA	RAIL,CONTROL MNT CHANNEL	D110002-D110005,D01-10010-D01-12999; D210002-D210009, D02-10110-D02-12999	1	
20	WD-SUB A9-002	WD,UPR CTL HBLG	D01-10097-D01-12999; D02-10469-D02-12999; WIRING DIAGRAM	1	

THIS PAGE IS INTENTIONALLY LEFT BLANK

2.3 | JOYSTICK SUBPARTS

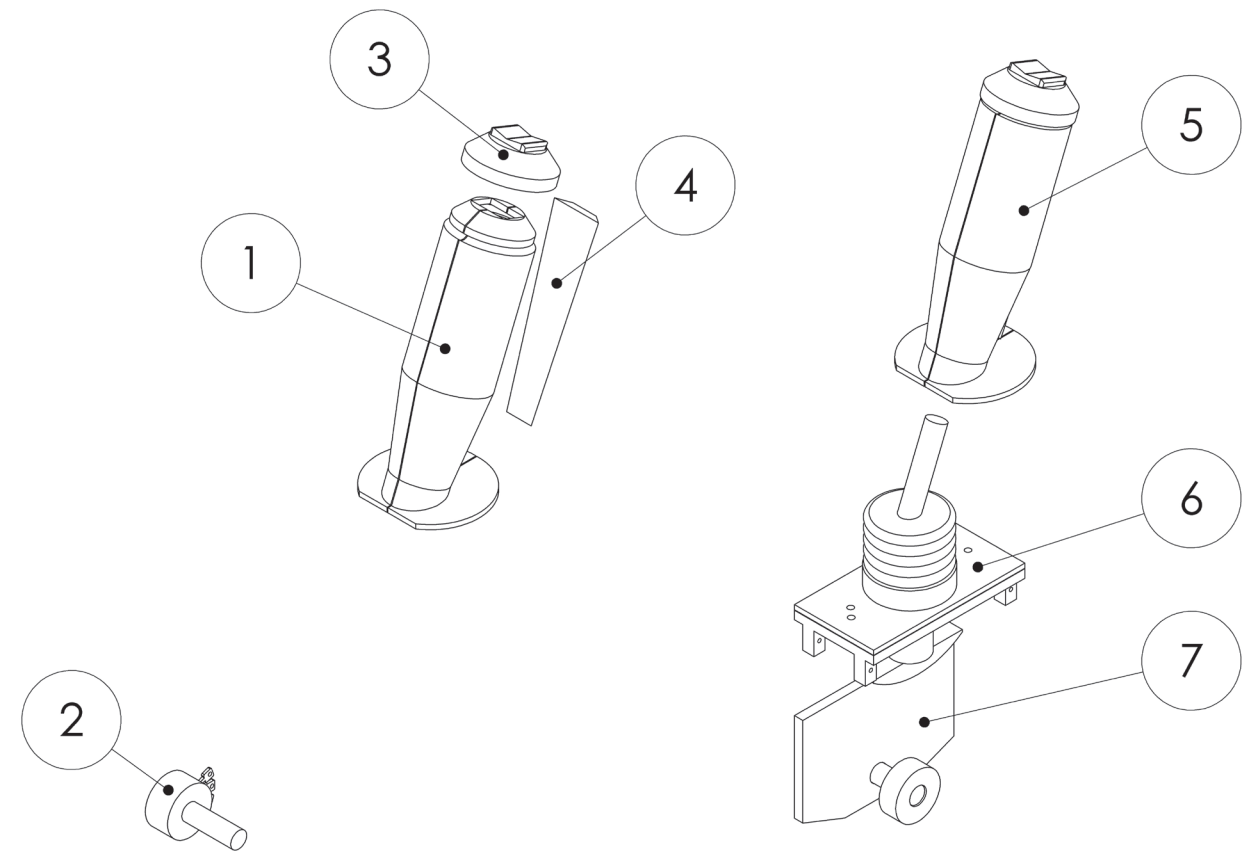


FIGURE 23: HB-1030/1430 Joystick Subparts

Item #	Part Number	Part Description	Notes	Qty	Superseded By
1	ELEC-601-1	JOYSTICK HANDLE-LEFT & RIGHT		1	
2	ELEC-601-2	JOYSTICK POTENTIOMETER		1	
3	ELEC-601-4	JOYSTICK RUBBER BOOT ROCKR CAP		1	
4	ELEC-601-5	JOYSTICK-RED ENABLER TRIGGER		1	
5	ELEC-601-A	JOYSTICK HANDLE ASSEMBLY		1	
6	ELEC-601-B	JOYSTICK SHAFT ASSEMBLY		1	
7	ELEC-601-C	JOYSTICK POT & GEAR ASM		1	

2.4 | LOWER CONTROL PARTS

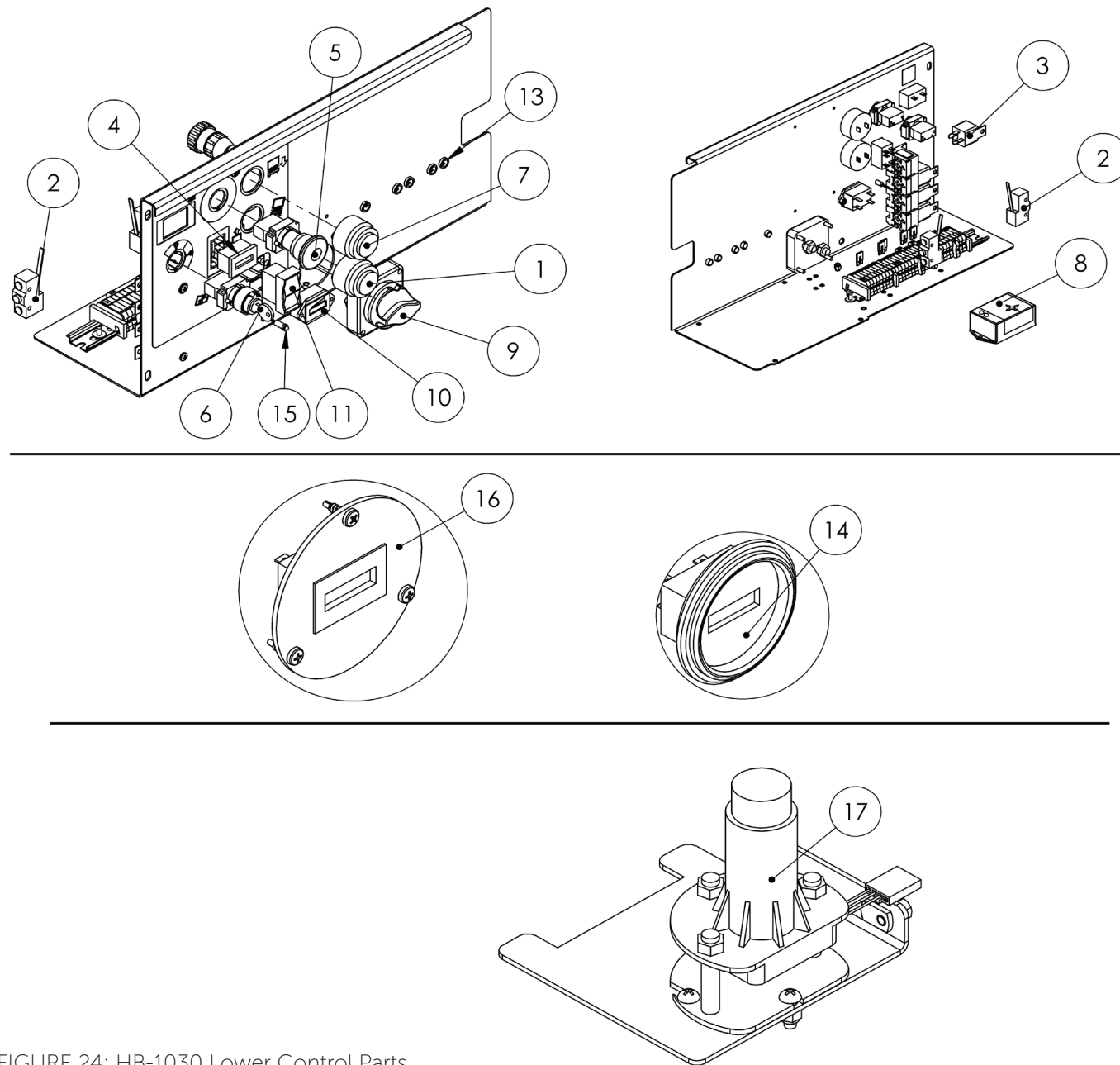


FIGURE 24: HB-1030 Lower Control Parts

Item #	Part Number	Part Description	Notes	Qty	Superseded By
1	ELEC-635-1	ALARM-FAST PULSE		1	
2	ELEC-624	SWITCH,LIMIT STRAIGHT LEVER		2	
3	ELEC-631	RELAY,SPDT,ICE CUBE,24V DC		4	
4	ELEC-610-2	METER,HOUR	D01-10002-D01-10005	1	
5	ELEC-071-KIT	BUTTON,PUSH/PULL RED E-STOP		1	
6	ELEC-073F-KIT	SWITCH,KEY		1	
7	ELEC-635	ALARM,SLOW PULSE		1	
8	ELEC-628	SENSOR,TILT 2.0 X 2.0 NO	USA ONLY; IN CANADA USE ELEC-629	1	
8	ELEC-629	SENSOR,TILT 1.5 X 2.0 NO	REQUIRED IN CANADA; OK FOR USA	1	
10	ELEC-610-4	METER,VOLT,24V	D01-13001-D01-19999	1	
11	ELEC-133B	SWITCH,ROCKER DPDT		1	
12	WD-112-21-205-50	WD,HBLG LWR CTL	D01-13001-D01-19999	1	
12	WD-SUB A8-001	WD,HBLG LWR CTL	D01-10002-D01-10005	1	
12	WD-SUB A8-002	WD,HBLG LWR CTL	D01-10097-D01-12999	1	
13	HARD-658	PLUG,0.38 DIA,TRANSPARENT		6	
14	ELEC-610	METER,HOUR & VOLT	Superseded; D01-10002-D01-10005OBSOLETE. REPLACE WITH ELEC-610-1-KIT	0	ELEC-610-1-KIT
15	ELEC-636	LED, RED		1	
16	ELEC-610-1-KIT	METER,HOUR		1	
17	ELEC-628-KIT	ASM,TILT SENSOR 2.0X2.0	USA ONLY; IN CANADA USE ELEC-629	1	

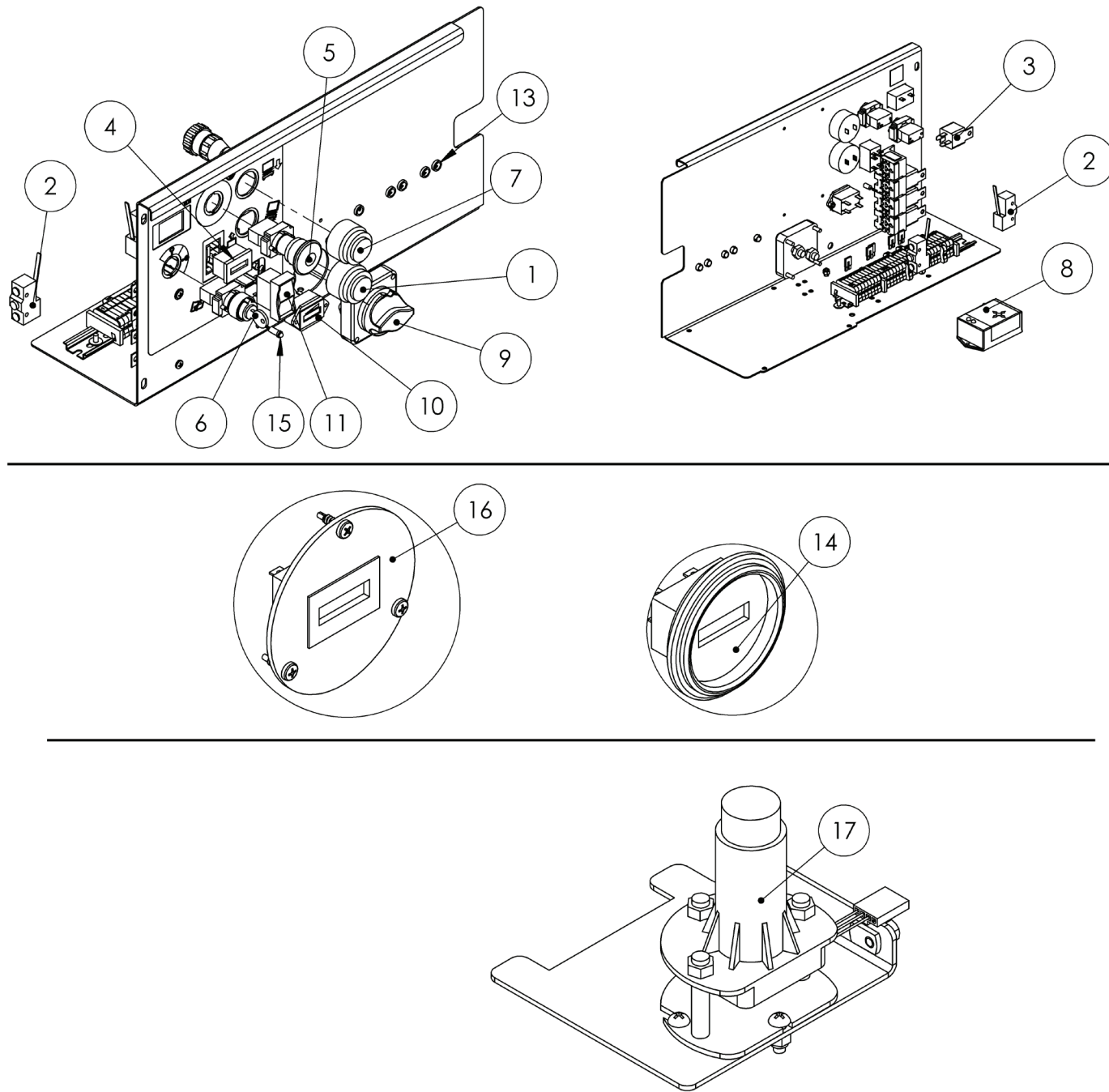


FIGURE 25: HB-1430 Lower Control Parts

Item #	Part Number	Part Description	Notes	Qty	Superseded By
1	ELEC-635-1	ALARM-FAST PULSE		1	
2	ELEC-624	SWITCH,LIMIT STRAIGHT LEVER		2	
3	ELEC-631	RELAY,SPDT,ICE CUBE,24V DC		4	
4	ELEC-610-2	METER,HOUR	D02-10119-D02-19999	1	
5	ELEC-071-KIT	BUTTON,PUSH/PULL RED E-STOP		1	
6	ELEC-073F-KIT	SWITCH,KEY		1	
7	ELEC-635	ALARM,SLOW PULSE		1	
8	ELEC-628	SENSOR,TILT 2.0 X 2.0 NO	USA ONLY; IN CANADA USE ELEC-629	1	
8	ELEC-629	SENSOR,TILT 1.5 X 2.0 NO	REQUIRED IN CANADA; OK FOR USA	1	
9	ELEC-633-4	SWITCH,MASTER DISCONNECT	D02-13001-D02-19999	1	
10	ELEC-610-4	METER,VOLT,24V	D02-13001-D02-19999	1	
11	ELEC-133B	SWITCH,ROCKER DPDT		1	
12	WD-112-21-205-50	WD,HBLG LWR CTL	D02-13001-D02-19999	1	
12	WD-SUB A8-001	WD,HBLG LWR CTL	D02-10010-D02-10469	1	
12	WD-SUB A8-002	WD,HBLG LWR CTL	D02-10469-D02-12999	1	
13	HARD-658	PLUG,0.38 DIA,TRANSPARENT		6	
14	ELEC-610	METER,HOUR & VOLT	Superseded; D02-10010-D02-10018 REPLACE WITH ELEC-610-1-KIT	0	ELEC-610-1-KIT
15	ELEC-636	LED, RED		1	
16	ELEC-610-1-KIT	METER,HOUR	D02-10010-D02-19999; MAY REPLACE ANY HOUR METER	1	
17	ELEC-628-KIT	ASM,TILT SENSOR 2.0X2.0	USA ONLY; IN CANADA USE ELEC-629	1	

2.5 | ENABLE SWITCH SUBPARTS

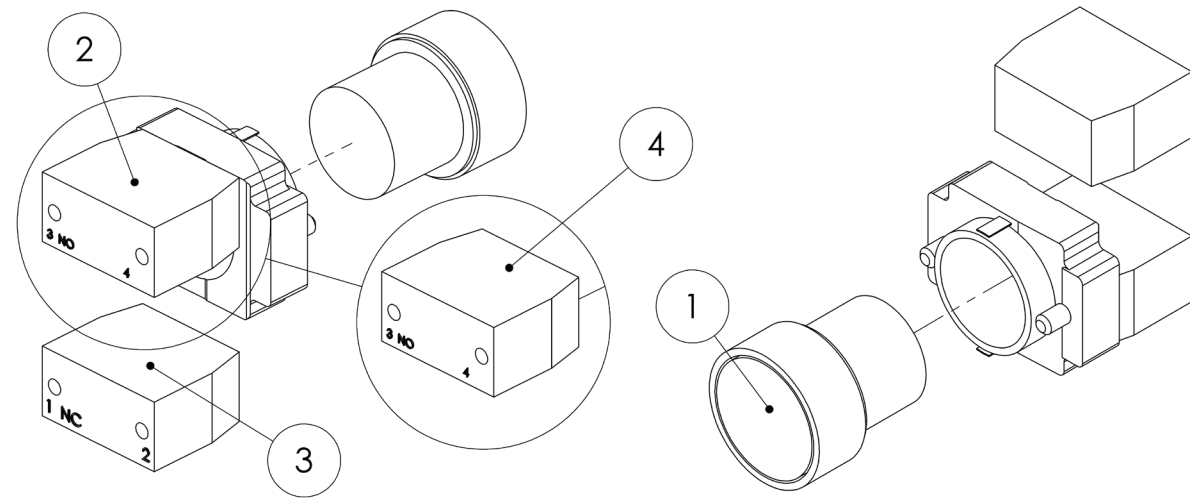


FIGURE 26: HB-1030/1430 Enable Switch Subparts

Item #	Part Number	Part Description	Notes	Qty	Superseded By
1	ELEC-602	BUTTON,PUSH GREEN		1	
2	ELEC-871	CONTACT BLOCK,NO W/ BASE		1	
3	ELEC-072	CONTACT BLOCK,NC		1	
4	ELEC-603	CONTACT BLOCK,NO		1	

2.6 | E-STOP SWITCH SUBPARTS

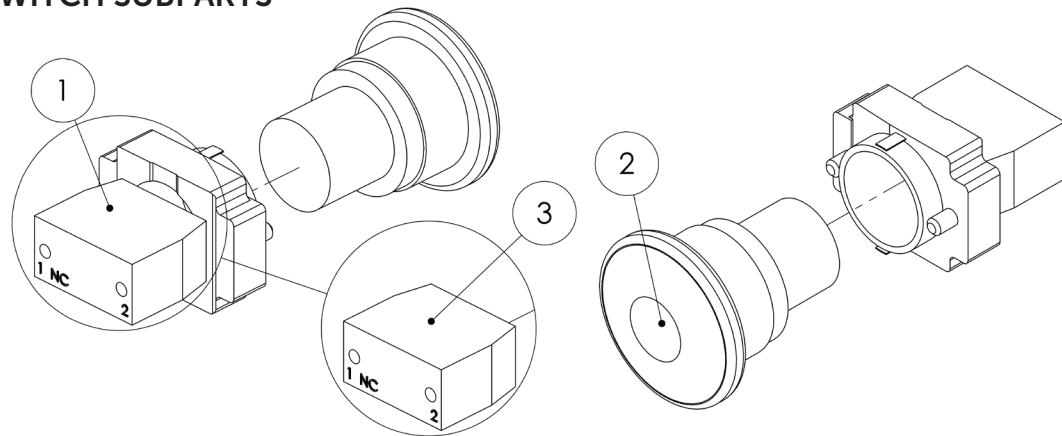


FIGURE 27: HB-1030/1430 E-Stop Switch Subparts

Item #	Part Number	Part Description	Notes	Qty	Superseded By
1	ELEC-872	CONTACT BLOCK,NC W/BASE		1	
2	ELE-071	BUTTON,PUSH/PULL RED E-STOP		1	
3	ELEC-072	CONTACT BLOCK,NC		1	

2.7 | KEY SWITCH SUBPARTS

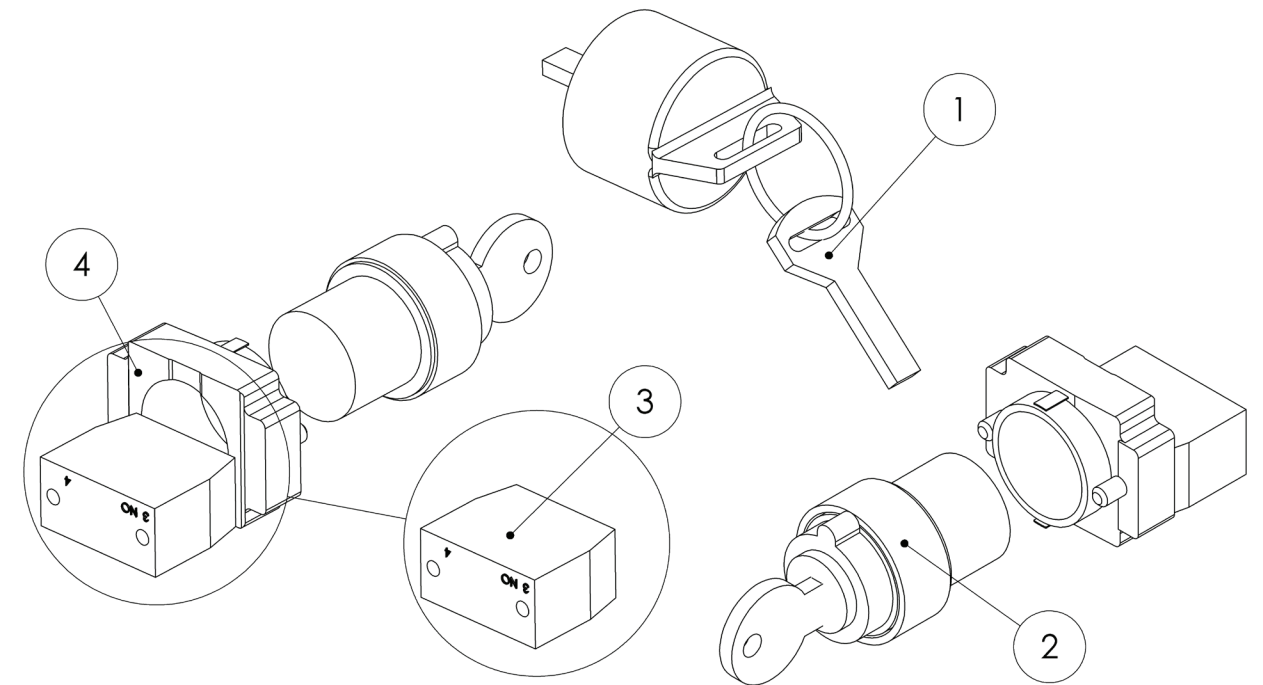


FIGURE 28: HB-1030/1430 Key Switch Subparts

Item #	Part Number	Part Description	Notes	Qty	Superseded By
1	ELEC-073EKEY	KEY,SPARE		1	
2	ELEC-073F	SWITCH,KEY		1	
3	ELEC-603	CONTACT BLOCK,NO		1	
4	ELEC-871	CONTACT BLOCK,NO W/BASE		1	

2.8 | ELEVATE/LOWER SWITCH PARTS

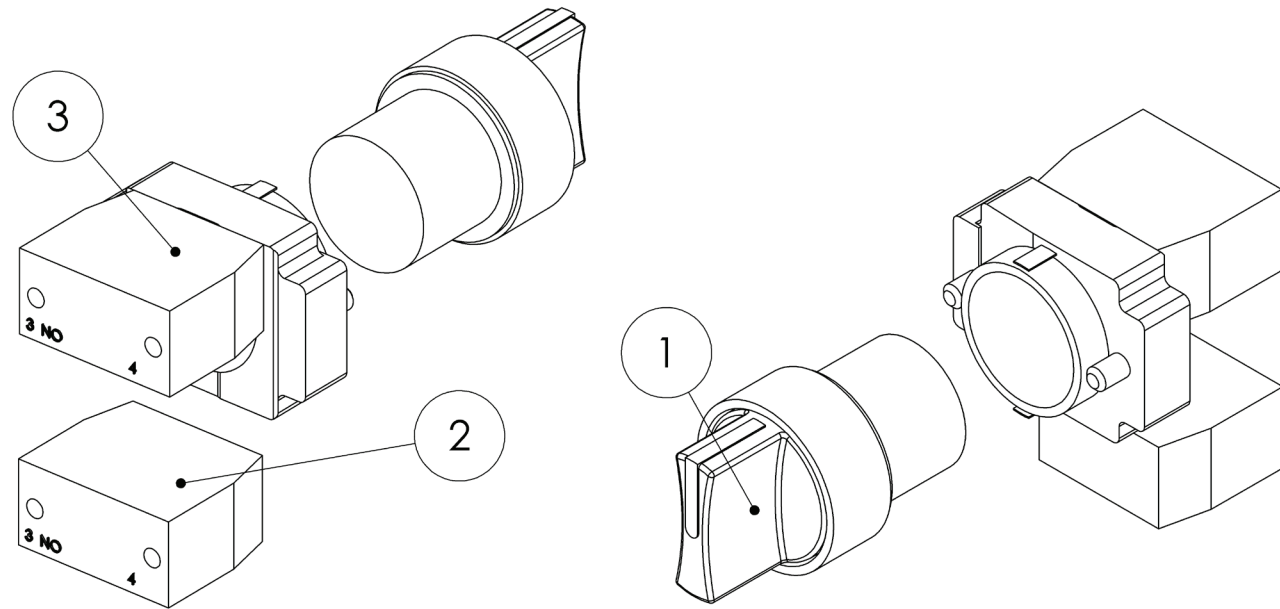


FIGURE 29: Elevate Lower Switch Parts

Item #	Part Number	Part Description	Notes	Qty	Superseded By
1	ELEC-002A	SWITCH,ROTARY MOMENTARY,3-POS		1	
2	ELEC-603	CONTACT BLOCK,NO		1	
3	ELEC-871	CONTACT BLOCK,NO W/BASE		1	

2.9 | MASTER POWER SWITCH PARTS

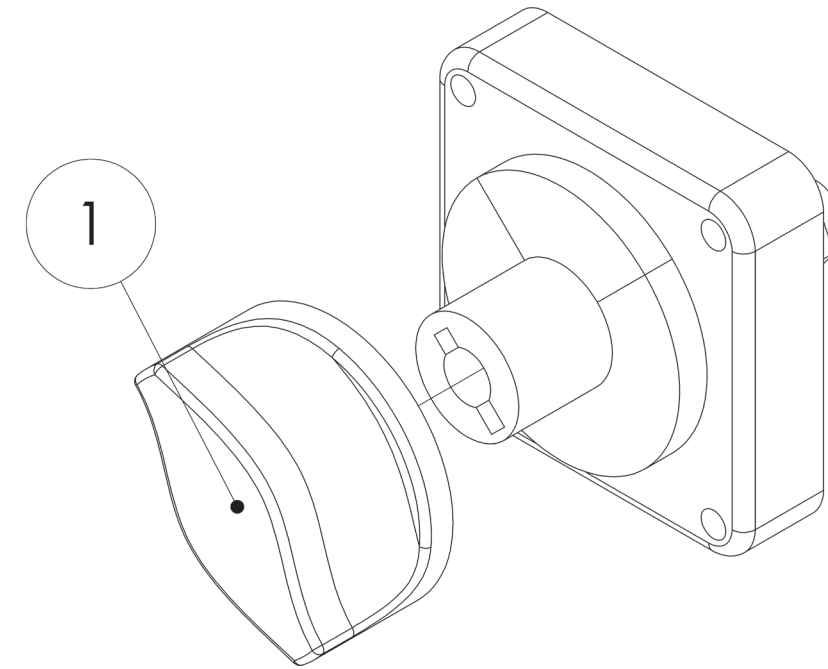


FIGURE 30: Master Power Switch Parts

Item #	Part Number	Part Description	Notes	Qty	Superseded By
1	ELEC-633-5	SWITCH KNOB,MASTER DISCONNECT		1	



## 3.1 | SCISSOR PARTS

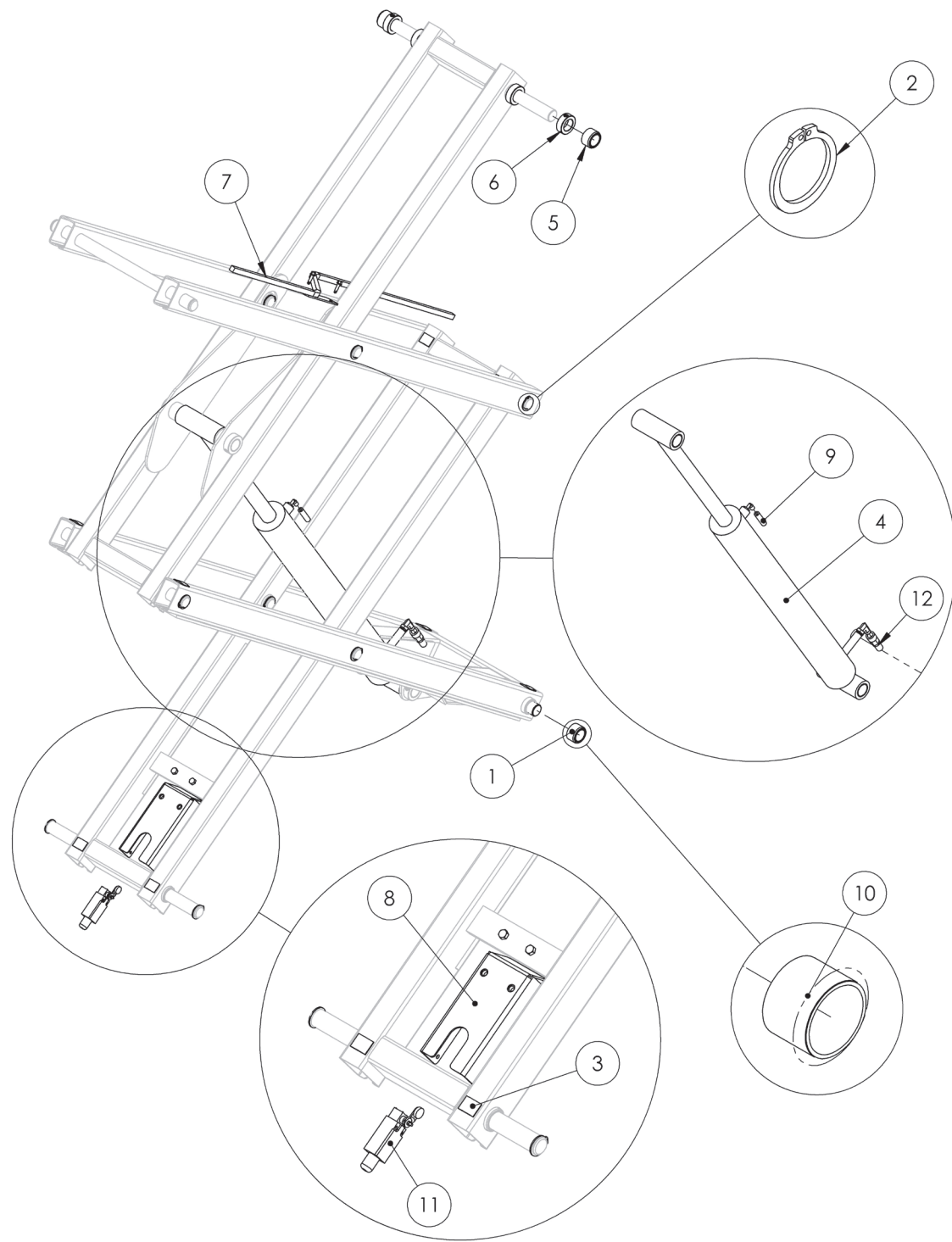


FIGURE 31: HB-1030 Scissor Parts

Item #	Part Number	Part Description	Notes	Qty	Superseded By
1	BM-6006-1-KIT	ASM,ROLLER,1.00 W/DU		1	
2	HARD-022	RET RING 1.25		1	
3	MISC-007-01-KIT	1 3/8 MOLDING BOND		1	
4	SUB A7-KIT	ASM,SCISSOR CYL 2X 10FT		1	
5	BM-6006-1-KIT	ASM,ROLLER,1.00 W/DU		1	
6	1021000102	SET COLLAR,1.25 ID		1	
7	112-03-001-01	SCISSOR,CONDUIT UPR		1	
7	HB-BM-01-EC	SCISSOR,CONDUIT UPR	Superseded; OBSOLETE. REPLACE WITH 112-03-001-01	0	112-03-001-01
8	1000202301	SCISSOR,SWITCH MNT		1	
9	HYDR-022-3	LOW PRESSURE HOSE	Quantity in inches	102	
10	HARD-001	DU BEARING, 1.25 ID, 1 LENGTH		1	
11	ELEC-123-5	SWITCH,LIMIT,ROT LVR,NO/NC PO		1	
12	HYDR-600	HOSE ASM,PRECUT 98.75		1	

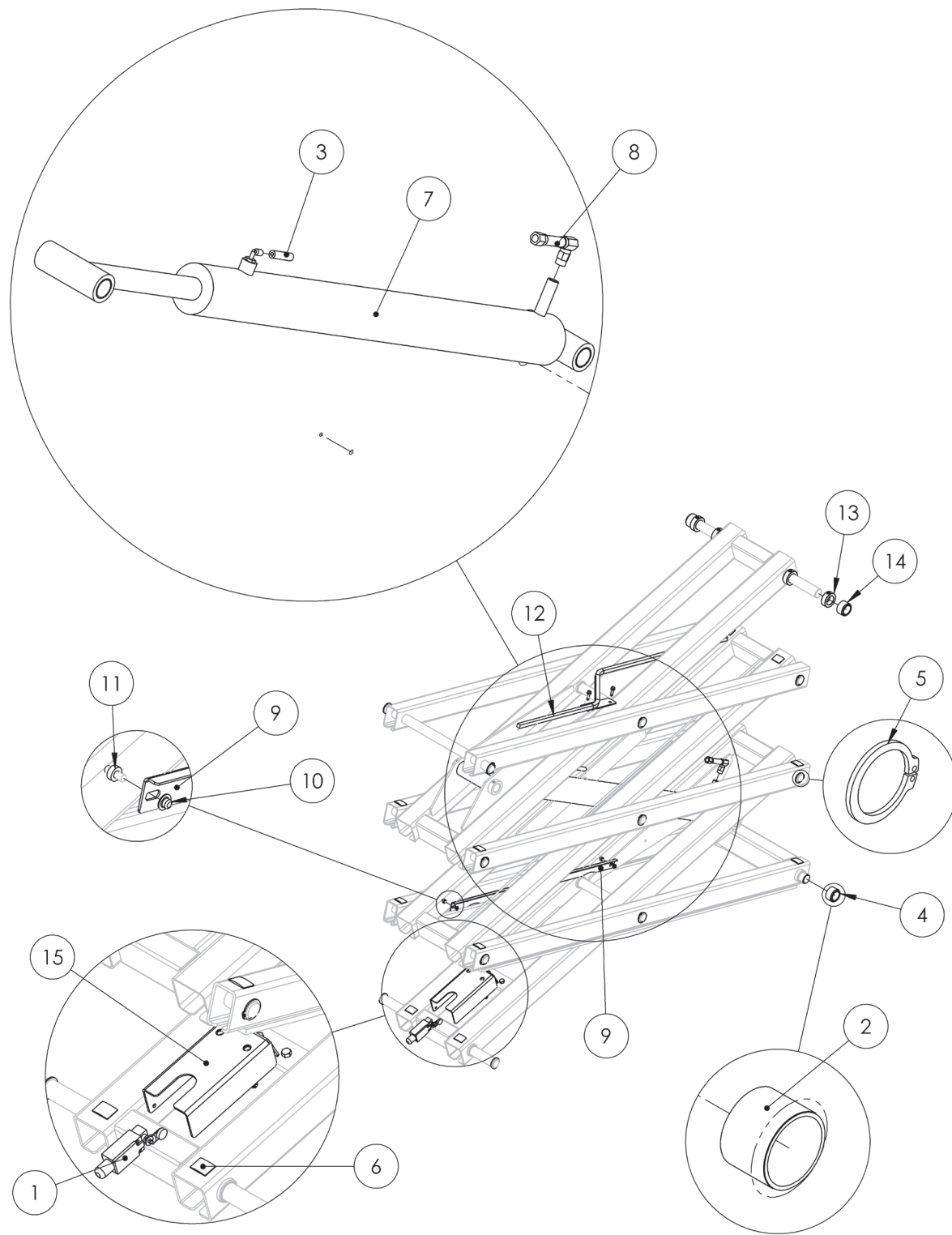


FIGURE 32: HB-1430 Scissor Parts

Item #	Part Number	Part Description	Notes	Qty	Superseded By
1	ELEC-123-5	SWITCH,LIMIT,ROT LVR,NO/NC PO		1	
2	HARD-001	DU BEARING, 1.25 ID, 1 LENGTH		1	
3	HYDR-022-3	LOW PRESSURE HOSE	Quantity in inches	163	
4	BM-6006-1-KIT	ASM,ROLLER,1.00 W/DU		1	
5	HARD-022	RET RING 1.25		1	
6	MISC-007-01-KIT	1 3/8 MOLDING BOND		1	
7	SUB A7-1-KIT	ASM,SCISSOR CYL 3X/4X 14/18		1	
8	HYDR-600-1B	HOSE ASM,PRECUT HB1430 CYL END		1	
9	LAS-L061-EC	SCISSOR,CONDUIT PARALLEL		1	
10	HARD-656	QUICK NUT-1/4 ROD		1	
11	HARD-636	SPACER,0.25ID,0.5 OD,0.19THK		1	
12	112-03-001-01	SCISSOR,CONDUIT UPR		1	
12	HB-BM-01-EC	SCISSOR,CONDUIT UPR	Superseded; OBSOLETE. REPLACE WITH 112-03-001-01	0	112-03-001-01
13	1021000102	SET COLLAR,1.25 ID		1	
14	BM-6006-1-KIT	ASM,ROLLER,1.00 W/DU		1	
15	1000202301	SCISSOR,SWITCH MNT		1	

3.2 | CYLINDER SUBPARTS

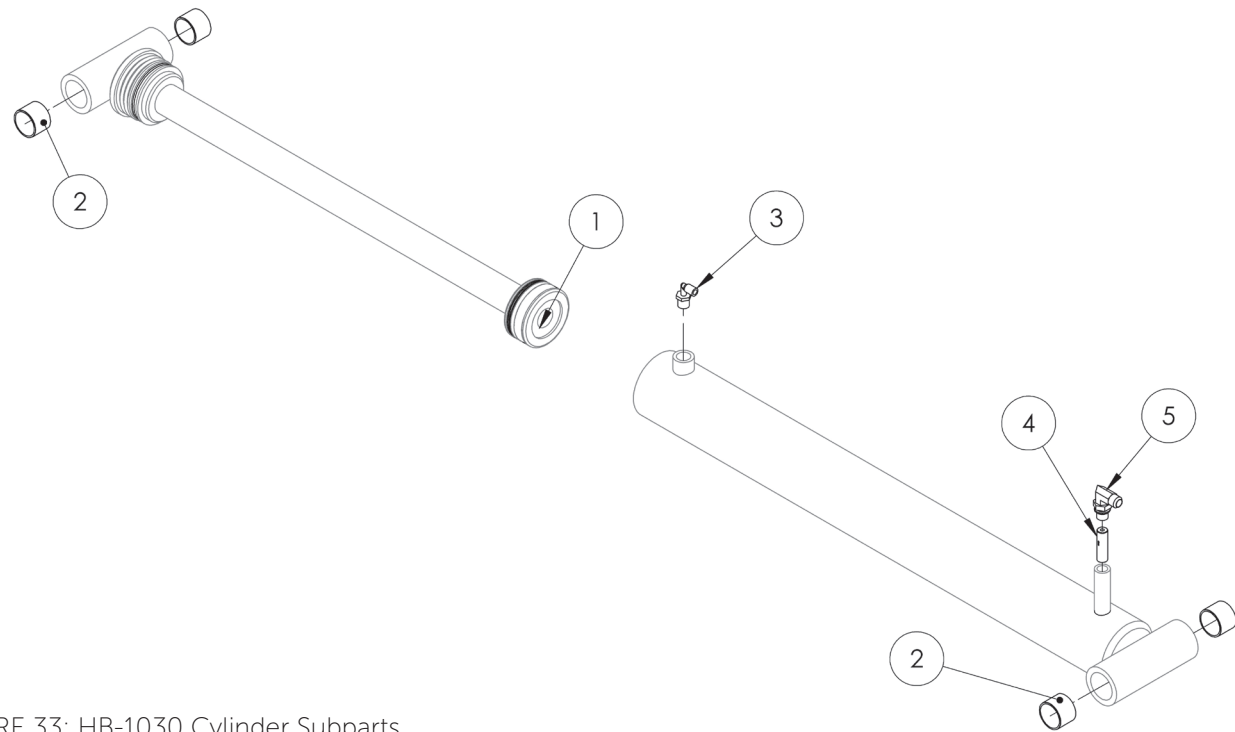


FIGURE 33: HB-1030 Cylinder Subparts

Item #	Part Number	Part Description	Notes	Qty	Superseded By
1	HYDR-007-1K	CYL,SEAL KIT 3.0 B,1.5 R		1	
2	HARD-001	DU BEARING, 1.25 ID, 1 LENGTH		4	
3	HYDR-019	FITTING,ELB,NPTM 3/8-1/4 PUSH		1	
4	HYDR-033	VELOCITY FUSE-7.0 GPM		1	
5	HYDR-035	FITTING,ELB,JICM9/16-SAEORM#6		1	

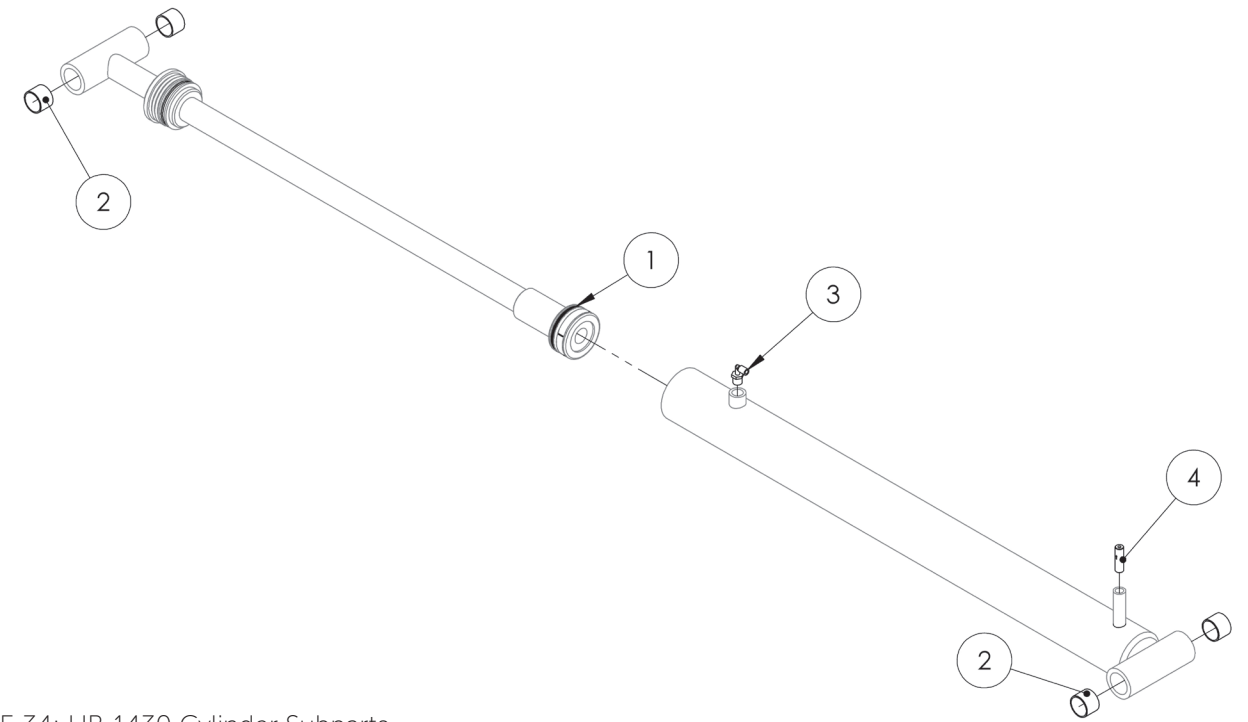


FIGURE 34: HB-1430 Cylinder Subparts

Item #	Part Number	Part Description	Notes	Qty	Superseded By
1	HYDR-041K	CYL,SEAL KIT 3.0 B, 1.5 R		1	
2	HARD-001	DU BEARING, 1.25 ID, 1 LENGTH		4	
3	HYDR-019	FITTING,ELB,NPTM 3/8-1/4 PUSH		1	
4	HYDR-033	VELOCITY FUSE-7.0 GPM		1	

## 4.1 | PLATFORM & RAILS PARTS

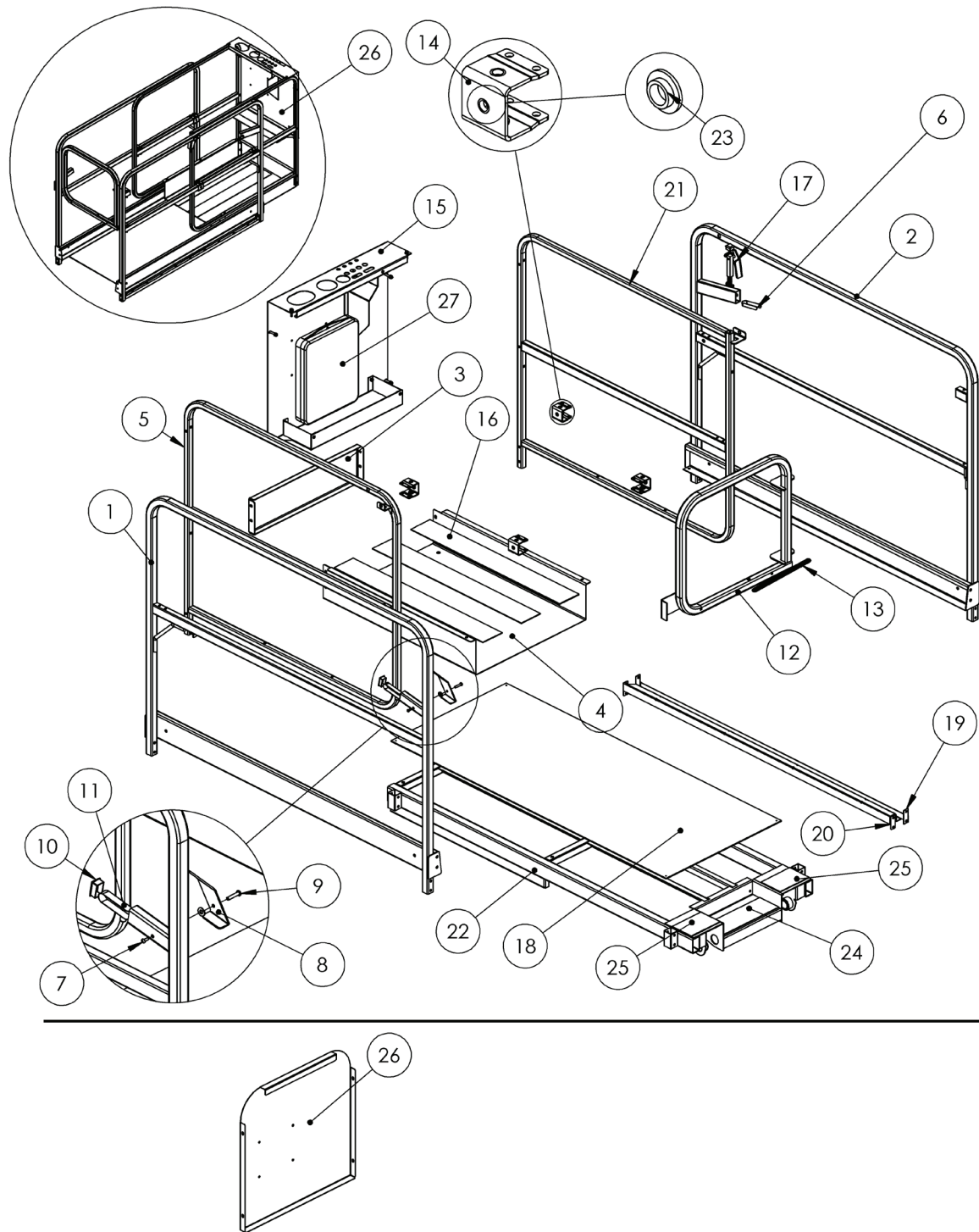


FIGURE 35: HB-1030/1430 Platform & Rail Parts

Item #	Part Number	Part Description	Notes	Qty	Superseded By
1	HB-WC-L-D-01-PC	RAIL,WC L,D (RND)	STANDARD YELLOW	1	
1	HB-WC-L-D-01-PG	RAIL,WC L,D (RND)	GREEN	1	

2	HB-WC-R-D-02-PC	RAIL,WC R,D (RND)	STANDARD YELLOW	1	
2	HB-WC-R-D-02-PG	RAIL,WC R,D (RND)	GREEN	1	
3	LAS-M135-PC	RAIL,SO TOE BOARD,D	STANDARD YELLOW	1	
3	LAS-M135-PCG	RAIL,SO TOE BOARD,D	GREEN	1	
4	LAS-M133-PC	RAIL,SO FLOOR,D	STANDARD YELLOW	1	
4	LAS-M133-PCG	RAIL,SO FLOOR,D	GREEN	1	
5	HB-WC-SO-02L-PC	RAIL,SO L,D (RND)	STANDARD YELLOW	1	
5	HB-WC-SO-02L-PG	RAIL,SO L,D (RND)	GREEN	1	
6	HARD-067	SNAP BUTTON,0.38 SINGLE END		1	
7	SCREW-1100	10-24 X 0.50 PAN HEAD SCRW		1	
8	LAS-M089-PC	RAIL,GATE LATCH	STANDARD YELLOW	1	
8	LAS-M089-PCG	RAIL,GATE LATCH	GREEN	1	
9	HARD-649	0.25 X 1.25 BARREL SCRW,10-24		1	
10	HARD-634	PLUG,1x1.5,BLACK		1	
11	HARD-066	SNAP BUTTON,0.50 SINGLE END		1	
12	HB-WC-G-01-PC	RAIL,GATE	STANDARD YELLOW	1	
12	HB-WC-G-01-PG	RAIL,GATE	GREEN	1	
13	HARD-606-1	ORING,0.19X12.5		1	
14	LAS-M078-1-KIT	ASM,RAIL SLIDE CHNL W/WASHERS	STANDARD YELLOW	4	
14	LAS-M078-1-KITG	ASM,RAIL SLIDE CHNL W/WASHERS	GREEN	4	
15	112-21-211-50-K	ASM,RAIL TOOL TRAY	STANDARD YELLOW	1	
15	112-21-211-52-K	ASM,RAIL TOOL TRAY	GREEN	1	
16	MISC-031-01-KIT	ANTI-SLIP TAPE,4.00,31.00 LENG		3	
17	1002100692-KIT	ASM,RAIL SLIDE LOCK	STANDARD YELLOW	1	
17	1002100692-KITG	ASM,RAIL SLIDE LOCK	GREEN	1	
18	HB-AL	PF,DECK		1	
19	112-04-010-01	PF,CONDUIT CHANNEL LOWER		1	
20	112-04-011-01	PF,CONDUIT CHANNEL UPPER		1	
21	HB-WC-SO-02R-PC	RAIL,SO R,D (RND)	STANDARD YELLOW	1	
21	HB-WC-SO-02R-PG	RAIL,SO R,D (RND)	GREEN	1	
22	1020400101	PF,WLDMNT		1	
23	HARD-626	WASH,0.38ID,0.5D,0.19THK,NYL	Superseded; OBSOLETE	0	HARD-626-3
23	HARD-626-3	WASH,0.38ID,0.5D,0.19THK,NYL		1	
24	MISC-031-02-KIT	ANTI-SLIP TAPE,4.00,12.00 LENG		1	
25	MISC-031-03-KIT	ANTI-SLIP TAPE,4.00,6.00 LENG		2	
26	112-21-203-50-K	ASM,RAIL W/SO,RND	STANDARD YELLOW	1	
26	112-21-203-52-K	ASM,RAIL W/SO,RND	GREEN	1	
26	LAS-M132-PC	RAIL,SO FRONT PANEL	Superseded; STANDARD YELLOW	0	112-21-211-50-K
26	LAS-M132-PCG	RAIL,SO FRONT PANEL	Superseded; GREEN	0	112-21-211-52-K
26	SUB C3-KIT	ASM,RAIL W/SO,RND	Superseded; STANDARD YELLOW	0	112-21-203-50-K
26	SUB C3-KITG	ASM,RAIL W/SO,RND	Superseded; GREEN	0	112-21-203-52-K
27	HARD-603	MANUAL BOX		1	

5.1 | DECALS

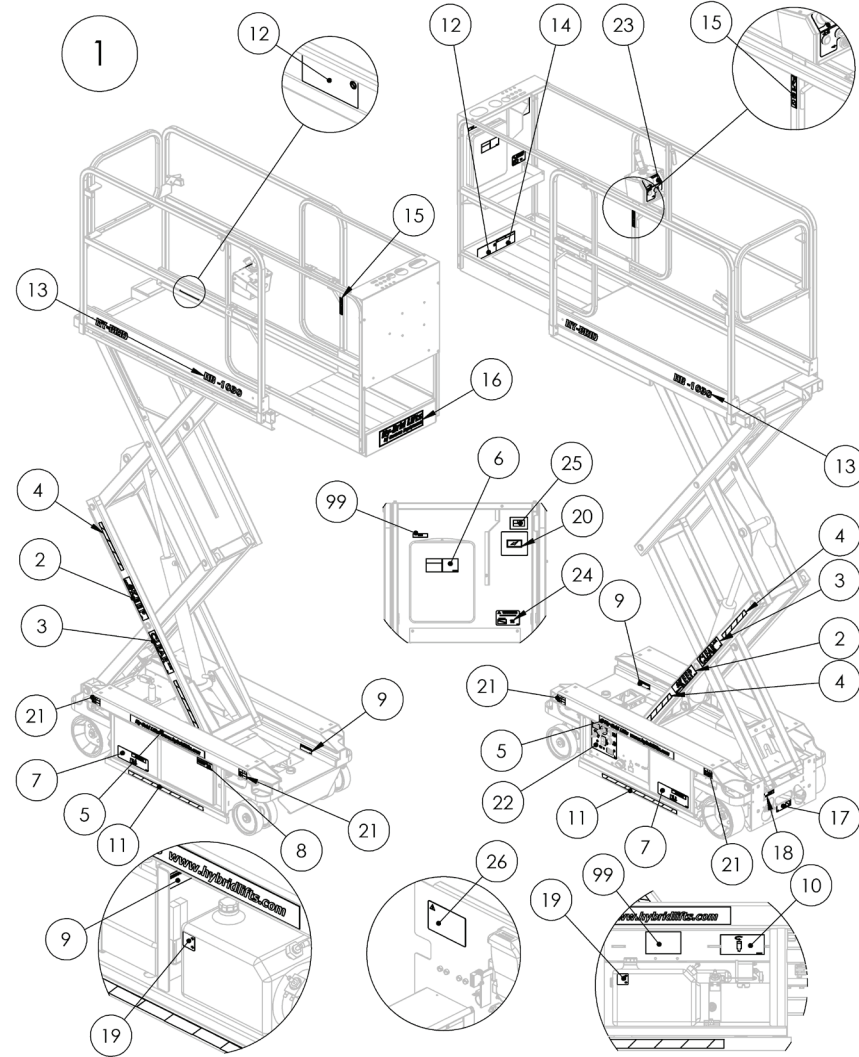


FIGURE 36: HB-1030 Decals

Item #	Part Number	Part Description	Notes	Qty	Superseded By
1	112-21-218-50-K	DECALS,HB-1030	D01-13000-D01-29999; DECAL SET	1	1
2	DE707	DECAL,KEEP		2	1
3	DE708	DECAL,CLEAR		2	1
4	DE717-62	DECAL,SAFETY STRIPE (12.00)		4	1
5	DE822	DECAL,WEBSITE		2	1
6	DE600E-10	DECAL,MANUAL BOX		1	1
7	DE709	DECAL, LWR		2	1
8	DE600-28	DECAL,E-DOWN LOCATION		1	1
9	DE600E-14	DECAL,MAINT LOCK		3	1
10	DE600-29	DECAL,E-DOWN		1	1
11	DE717-61	DECAL,SAFETY STRIPE (24.00)		2	1
12	DE732	DECAL,CAPACITY,750#,2P,I,W/SO		2	1
13	DE603	DECAL,MODEL HB-1030		2	1
14	DE706	DECAL,UPR HB		1	1

15	DE746	DECAL,LANYARD ATTACHMENT		2	1
16	DE821	DECAL,LOGO HY-BRID		1	1
17	DE747	DECAL,BRAKE RELEASE/NO TOW		1	1
18	DE753	DECAL,CHARGER CORD		1	1
19	DE679	DECAL,HYDR FLUID		1	1
20	DE777	DECAL,BATT CHARGE DAILY		1	1
21	DE778	DECAL,WHEEL LOAD HB-1030 S2		4	1
22	DE623A	DECAL,CTL LWR	D11-0002-D110005, D01-10010-D01-12999	1	2
22	DE770	DECAL,CTL LWR HBLG-ANSI	D01-13000-D01-29999	1	1
23	DE624A	DECAL,CTL UPR	D11-0002-D110005, D01-10010-D01-12999	1	2
23	DE772	DECAL,CTL UPR	D01-13000-D01-29999	1	1
24	DE649	DECAL,CAPACITY, TOOL TRAY		1	1
25	DE782	DECAL,MADE IN USA		1	1
26	DE805	DECALS,HB2	DECAL SET,D110002-D110005,D01-10010-D01-1299	0	112-21-008-50-K 2
29	DE600-01	DECAL,WARNINGS	D110002-D110005,D01-10010-D01-1299	0	DE706 2
30	DE600-02	DECAL,DANGERS	D110002-D110005,D01-10010-D01-1300	0	DE600-02-KIT-50 2
31	DE600-03	DECAL,CAPACITY 750#,2P,I, W/ SO	D110002-D110005,D01-10010-D01-1301	0	DE732 2
32	DE600-04	DECAL,PLAT EXT & GATE	D110002-D110005,D01-10010-D01-1302	0	DE706 2
33	DE600-07	DECAL,DO NOT POWERWASH	D110002-D110005,D01-10010-D01-1303	0	N/A 2
34	DE600-08	DECAL,BATT GAS WARNING	D110002-D110005,D01-10010-D01-1304	0	DE709 2
35	DE600-09	DECAL, ELECTROCUTION HAZARD	D110002-D110005,D01-10010-D01-1305	0	DE706 2
36	DE600-16A	DECAL,KEEP	D110002-D110005,D01-10010-D01-1306	0	DE707 2
37	DE600-16B	DECAL,CLEAR	D110002-D110005,D01-10010-D01-1307	0	DE708 2
38	DE600-17	DECAL,SAFETY STRIPE (24.00)	D110002-D110005,D01-10010-D01-1308	0	DE717-61 2
39	DE600-21	DECAL,BRAKE RELEASE/NO TOW	D110002-D110005,D01-10010-D01-1309	0	DE747 2
40	DE600-22	DECAL,BRAKE RELEASE/NO TOW	D110002-D110005,D01-10010-D01-1310	0	DE747 2
41	DE600E-02	DECAL,DANGERS INDOOR ONLY	D110002-D110005,D01-10010-D01-1311	0	DE600-02-KIT 2
42	DE600E-05	DECAL,DANGER TIP	D110002-D110005,D01-10010-D01-1312	0	DE706 2
43	DE600E-06	DECAL,TIRE REPLACEMENT	D110002-D110005,D01-10010-D01-1313	0	DE709 2
44	DE600E-18	DECAL,BATT WEIGHT	D110002-D110005,D01-10010-D01-1314	0	DE709 2
45	DE600E-30	DECAL,MAINT LOCK USE	D110002-D110005,D01-10010-D01-1315	0	DE708 2
46	DE613	DECAL,LANYARD ATTACHMENT	D110002-D110005,D01-10010-D01-1316	0	DE746 2
47	DE619	DECAL,CHARGER CORD	D110002-D110005,D01-10010-D01-1317	0	DE753 2
48	DE626	DECAL,PH WARNING	D110002-D110005,D01-10010-D01-1318	0	DE709 2
49	DE627	DECAL,HOLE COVER	D110002-D110005,D01-10010-D01-1319	0	N/A 2
50	DE600-02-KIT-50	DECAL,DANGERS RETROFIT,1030	KIT, D110002-D110005,D01-10010-D01-1320	1	2
51	DE601	DECAL,LOGO HY-BRID	Superseded;	0	DE821 1
52	DE652	DECAL,WEBSITE	Superseded;	0	DE822 1
53	112-21-008-50-K	DECALS,HB-1030	DECAL SET,D110002-D110005,D01-10010-D01-1299	1	2
99	N/A	SERIAL NUMBER PLATE		0	1

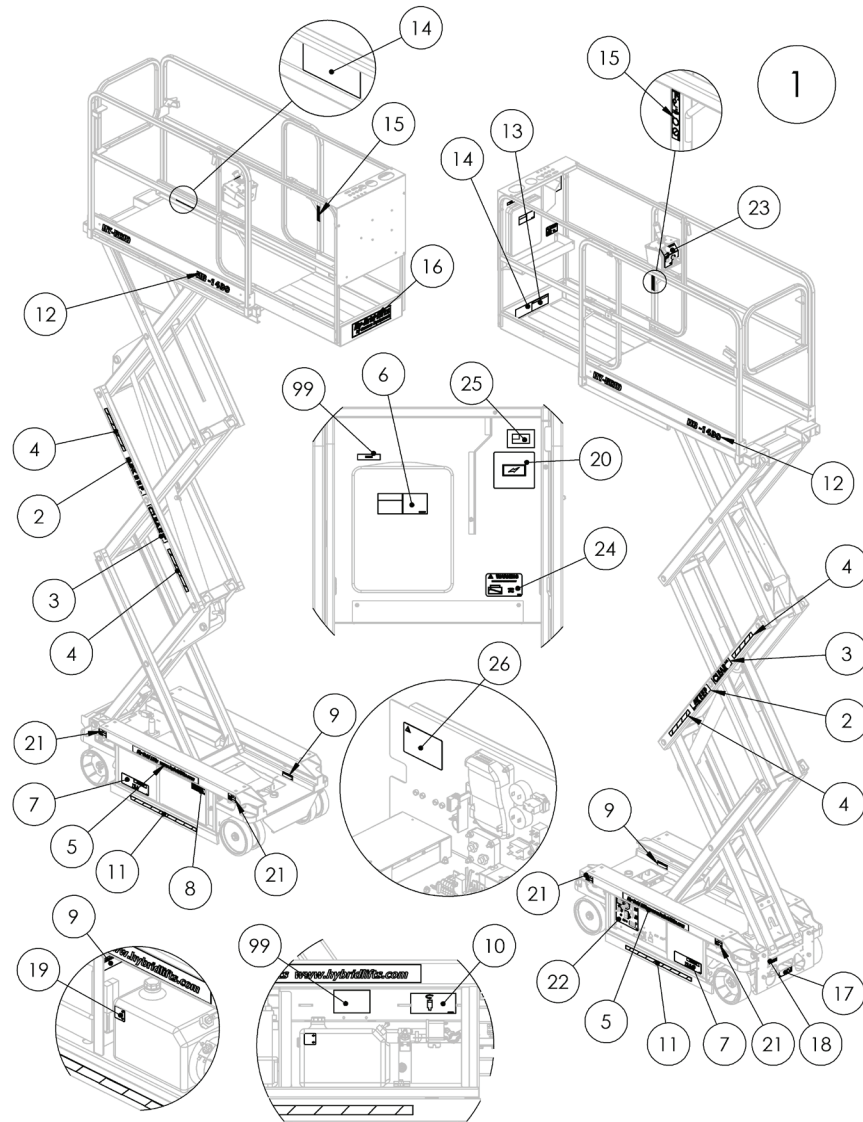
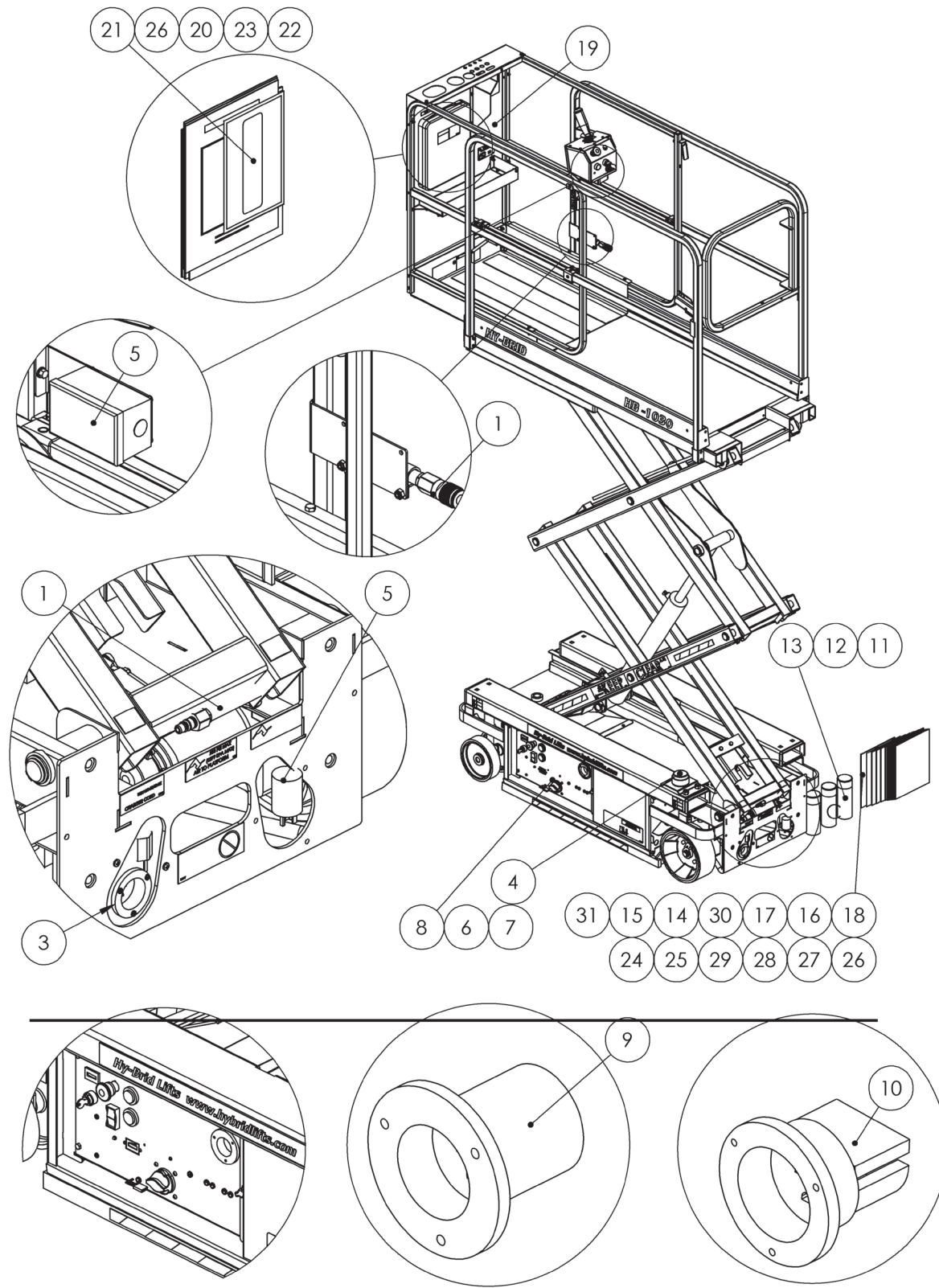


FIGURE 37: HB-1430 Decals

Item #	Part Number	Part Description	Notes	Qty	Superseded By
1	112-21-218-55-K	DECALS,HB-1430	D02-13000-D02-29999; DECAL SET	1	
2	DE707	DECAL,KEEP		2	
3	DE708	DECAL,CLEAR		2	
4	DE717-62	DECAL,SAFETY STRIPE (12.00)		4	
5	DE822	DECAL,WEBSITE		2	
6	DE600E-10	DECAL,MANUAL BOX		1	
7	DE709	DECAL, LWR		2	
8	DE600-28	DECAL,E-DOWN LOCATION		1	
9	DE600E-14	DECAL,MAINT LOCK		3	
10	DE600-29	DECAL,E-DOWN		1	
11	DE717-61	DECAL,SAFETY STRIPE (24.00)		2	
12	DE603-1	DECAL,MODEL HB-1430		2	
13	DE706	DECAL,UPR HB		1	

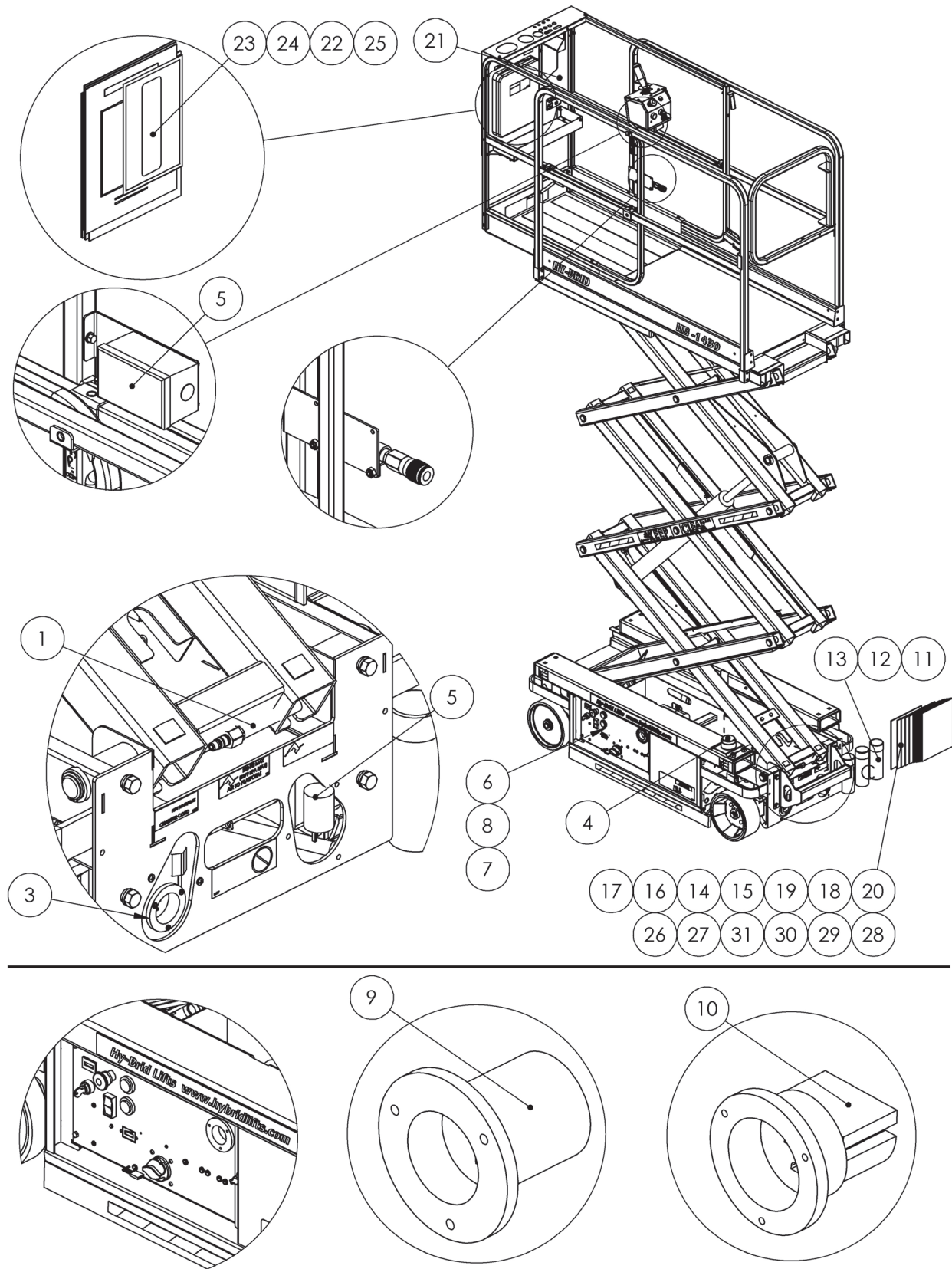
14	DE733	DECAL,CAPACITY,670#,2P,I,W/SO		2	
15	DE746	DECAL,LANYARD ATTACHMENT		2	
16	DE821	DECAL,LOGO HY-BRID		1	
17	DE747	DECAL,BRAKE RELEASE/NO TOW		1	
18	DE753	DECAL,CHARGER CORD		1	
19	DE679	DECAL,HYDR FLUID		1	
20	DE777	DECAL,BATT CHARGE DAILY		1	
21	DE663	DECAL,WHEEL LOAD HB-1430 S2		4	
22	DE623A	DECAL,CTL LWR	D210002-D210009, D02-10010-D02-12999	1	
22	DE770	DECAL,CTL LWR HBLG-ANSI	D02-13000-D02-29999	1	
23	DE624A	DECAL,CTL UPR	D210002-D210009, D02-10010-D02-12999	1	
23	DE772	DECAL,CTL UPR	D02-13000-D02-29999	1	
24	DE649	DECAL,CAPACITY, TOOL TRAY		1	
25	DE782	DECAL,MADE IN USA		1	
26	DE805	DECALS,HB2	D210002-D210009, D02-10010-D02-12999, DECAL SET	0	112-21-008-55-K
29	DE600-01	DECAL,WARNINGS	D210002-D210009, D02-10010-D02-10886	0	DE706
30	DE600-02	DECAL,DANGERS	D210002-D210009, D02-10010-D02-10887	0	DE600-02-KIT-55
31	DE600-03A	DECALCAPACITY,670#,2P,I,W/SO	D210002-D210009, D02-10010-D02-10888	0	DE733
32	DE600-04	DECAL,PLAT EXT & GATE	D210002-D210009, D02-10010-D02-10889	0	DE706
33	DE600-07	DECAL,DO NOT POWERWASH	D210002-D210009, D02-10010-D02-10890	0	N/A
34	DE600-08	DECAL,BATT GAS WARNING	D210002-D210009, D02-10010-D02-10891	0	DE709
35	DE600-09	DECAL, ELECTROCUTION HAZARD	D210002-D210009, D02-10010-D02-10892	0	DE706
36	DE600-16A	DECAL,KEEP	D210002-D210009, D02-10010-D02-10893	0	DE707
37	DE600-16B	DECAL,CLEAR	D210002-D210009, D02-10010-D02-10894	0	DE708
38	DE600-17	DECAL,SAFETY STRIPE (24.00)	D210002-D210009, D02-10010-D02-10895	0	DE717-61
39	DE600-21	DECAL,BRAKE RELEASE/NO TOW	D210002-D210009, D02-10010-D02-10896	0	DE747
40	DE600-22	DECAL,BRAKE RELEASE/NO TOW	D210002-D210009, D02-10010-D02-10897	0	DE747
41	DE600E-02	DECAL,DANGERS INDOOR ONLY	D210002-D210009, D02-10010-D02-10898	0	DE600-02-KIT
42	DE600E-05	DECAL,DANGER TIP	D210002-D210009, D02-10010-D02-10899	0	DE706
43	DE600E-06	DECAL,TIRE REPLACEMENT	D210002-D210009, D02-10010-D02-10900	0	DE709
44	DE600E-18	DECAL,BATT WEIGHT	D210002-D210009, D02-10010-D02-10901	0	DE709
45	DE600E-30	DECAL,MAINT LOCK USE	D210002-D210009, D02-10010-D02-10902	0	DE708
46	DE613	DECAL,LANYARD ATTACHMENT	D210002-D210009, D02-10010-D02-10903	0	DE746
47	DE619	DECAL,CHARGER CORD	D210002-D210009, D02-10010-D02-10904	0	DE753
48	DE626	DECAL,PH WARNING	D210002-D210009, D02-10010-D02-10905	0	DE709
49	DE627	DECAL,HOLE COVER	D210002-D210009, D02-10010-D02-10906	0	N/A
50	DE600-02-KIT-55	DECAL,DANGERS RETROFIT,1430	KIT,D210002-D210009, D02-10010-D02-10907	1	
51	DE601	DECAL,LOGO HY-BRID	Superseded;	0	DE821
52	DE652	DECAL,WEBSITE	Superseded;	0	DE822
53	112-21-008-55-K	DECALS,HB-1430	D210002-D210009, D02-10010-D02-12999, DECAL SET	1	
99	N/A	SERIAL NUMBER PLATE		0	

## 6.1 | OPTIONS & MISCELLANEOUS PARTS



Item #	Part Number	Part Description	Notes	Qty	Superseded By
1	112-21-013-50-K	ASM,AIR TO PF HB-1030S2		1	
2	1002000650-KIT	ASM,TOOL TRAY, HB	Superseded;	0	112-21-211-50-K
3	1022000451-KIT	CORD,NEMA POWER PORT		1	
4	1022000850-KIT	BEACON,FLASHING AMBER HB S2		1	
5	1022100950-KIT	PTP,HB1030		1	
6	1022101350-KIT	ASM,TILT INTERLOCK, HB2		1	
7	1022101750-KIT	ASM,MOTION ALARM ,HB S2		1	
8	1023000650-KIT	CONVERSION KIT: ANSI/CSA HB2		1	
9	ELEC-807	PLUG,POWER PORT	Superseded; D01-10010-D01-10092	0	ELEC-831
10	ELEC-831	PLUG,POWER PORT	D01-10010-D01-10092	1	
11	MISC-624	PAINT,WHITE TOUCH-UP SPRAY		1	
12	MISC-625	PAINT,YELLOW TOUCH-UP SPRAY		1	
13	MISC-627	PAINT,GREEN TOUCH-UP SPRAY		1	
14	SUPO-610FRC	MANUAL,OP, HB S2,FR (CAN)	D01-10010-D01-12999; FRENCH	1	
15	SUPO-611FRC	MANUAL,MAINT,HB S2,FR (CAN)	D01-10010-D01-12999; FRENCH	1	
16	SUPO-627	DOCUMENT,CSA DECL HB-1030S1&S2	CONTACT MANUFACTURER WITH REQUEST	1	
17	SUPO-656	MANUAL ADDENDUM,HB S2 DECALS		1	
18	SUPO-682	MANUAL,PARTS HB-1030/1430 S2		1	
19	112-21-211-50-K	ASM,RAIL TOOL TRAY		1	
20	MISC-601	MANUAL,RESPONSIBILITIES A92.6		1	
21	MISC-600	MANUAL,AERIAL PF		1	
22	SUPO-693	MANUAL OP, HB SERIES 2.6	D01-13001-D01-19999	1	
23	SUPO-694	MANUAL MAINT, HB SERIES 2	D01-13001-D01-19999	1	
24	SUPO-611	MANUAL MAINT, HB SERIES 2	D01-10010-D01-12999	1	
25	SUPO-610	MANUAL OP, HB SERIES 2		1	
26	SUPO-693FRC	MANUAL OP, HB SERIES 2.6	D01-13001-D01-19999; FRENCH	1	
27	SUPO-693SPA	MANUAL OP, HB SERIES 2.6	D01-13001-D01-19999; SPANISH	1	
28	SUPO-694FRC	MANUAL MAINT, HB SERIES 2	D01-13001-D01-19999; FRENCH	1	
29	SUPO-694SPA	MANUAL MAINT, HB SERIES 2	D01-13001-D01-19999; SPANISH	1	
30	SUPO-610SPA	MANUAL,OP, HB S2,SP (AME)	D01-10010-D01-12999; SPANISH	1	
31	SUPO-611SPA	MANUA, MAINT,HB S2,SP (AME)	D01-10010-D01-12999; SPANISH	1	

FIGURE 38: HB-1030 Options & Miscellaneous Parts



Item #	Part Number	Part Description	Notes	Qty	Superseded By
1	112-21-013-55-K	ASM,AIR TO PF HB-1430S2	Superseded;	0	112-21-211-50-K
2	1002000650-KIT	ASM,TOOL TRAY, HB	Superseded;	0	112-21-211-50-K
3	1022000451-KIT	CORD,NEMA POWER PORT		1	
4	1022000850-KIT	BEACON,FLASHING AMBER HB S2		1	
5	1022100951-KIT	PTP,HB1430		1	
6	1022101350-KIT	ASM,TILT INTERLOCK, HB2		1	
7	1022101750-KIT	ASM,MOTION ALARM ,HB S2		1	
8	1023000650-KIT	CONVERSION KIT: ANSI/CSA HB2		1	
9	ELEC-807	PLUG,POWER PORT	Superseded; D02-10010-D02-10118	0	ELEC-831
10	ELEC-831	PLUG,POWER PORT	D02-10010-D02-10118	1	
11	MISC-624	PAINT,WHITE TOUCH-UP SPRAY		1	
12	MISC-625	PAINT,YELLOW TOUCH-UP SPRAY		1	
13	MISC-627	PAINT,GREEN TOUCH-UP SPRAY		1	
14	SUPO-610FRC	MANUAL,OP, HB S2,FR (CAN)	D02-10010-D02-12999; FRENCH	1	
15	SUPO-610SPA	MANUAL,OP, HB S2,SP (AME)	D02-10010-D02-12999; SPANISH	1	
16	SUPO-611FRC	MANUAL,MAINT,HB S2,FR (CAN)	D02-10010-D02-12999; FRENCH	1	
17	SUPO-611SPA	MANUA, MAINT,HB S2,SP (AME)	D02-10010-D02-12999; SPANISH	1	
18	SUPO-628	DOCUMENT,CSA DECL HB-1430S1&S2	CONTACT MANUFACTURER WITH REQUEST	1	
19	SUPO-656	MANUAL ADDENDUM,HB S2 DECALS	D02-10010-D02-10887	1	
20	SUPO-682	MANUAL,PARTS HB-1030/1430 S2		1	
21	112-21-211-50-K	ASM,RAIL TOOL TRAY		1	
22	MISC-601	MANUAL,RESPONSIBILITIES A92.6		1	
23	MISC-600	MANUAL,AERIAL PF		1	
24	SUPO-693	MANUAL OP, HB SERIES 2.6	D02-13001-D02-19999	1	
25	SUPO-694	MANUAL MAINT, HB SERIES 2	D02-13001-D02-19999	1	
26	SUPO-611	MANUAL MAINT, HB SERIES 2	D02-10010-D02-12999	1	
27	SUPO-610	MANUAL OP, HB SERIES 2	D02-10010-D02-12999	1	
28	SUPO-693FRC	MANUAL OP, HB SERIES 2.6	D02-13001-D02-19999; FRENCH	1	
29	SUPO-693SPA	MANUAL OP, HB SERIES 2.6	D02-13001-D02-19999; SPANISH	1	
30	SUPO-694FRC	MANUAL MAINT, HB SERIES 2	D02-13001-D02-19999; FRENCH	1	
31	SUPO-694SPA	MANUAL MAINT, HB SERIES 2	D02-13001-D02-19999; SPANISH	1	

FIGURE 39: HB-1430 Options & Miscellaneous Parts



# **HY-BRID LIFTS™**

BY CUSTOM EQUIPMENT LLC

---

Self-Propelled Aerial Work Platform  
Parts Manual  
HB-1030/HB-1430

---

© 2019 Custom Equipment, LLC  
2647 Highway 175  
Richfield, WI 53076  
Tel. 262-644-1300  
Fax: 262-644-1320  
[www.hybridlifts.com](http://www.hybridlifts.com)  
[service@customequipmentlifts.com](mailto:service@customequipmentlifts.com)

“Hy-Brid Lifts” is a trademark of Custom Equipment, LLC  
These machines comply with ANSI/SIA A92.6

Revision Date: September 2019

Printed in the U.S.A.