

HY-BRID LIFTS™

BY CUSTOM EQUIPMENT LLC

PARTS MANUAL

SELF-PROPELLED AERIAL WORK PLATFORM

SUPO-683

REV B



HB-1230

SERIES I

Model HB-1230 Serial # Ranges
D08-1000 - D08-19999

TABLE OF CONTENTS

NOTES.....	2
SERIAL NUMBER REFERENCE	3
TABLE OF CONTENTS.....	4
INDEX OF FIGURES.....	5
SECTION 1 BASE	6
1.1 POTHOLE GUARD PARTS	6
1.2 POTHOLE ACTUATOR SUBPARTS	7
1.3 CASTER PARTS	8
1.4 CASTER SUBPARTS.....	9
1.5 REAR WHEEL SUBPARTS	10
1.6 DRIVE PARTS.....	11
1.7 DRIVE SUBPARTS	12
1.8 BRAKE SUBPARTS.....	13
1.9 PUMP PARTS.....	14
1.10 PUMP SUBPARTS	15
1.11 MISCELLANEOUS PARTS	16
SECTION 2 CONTROLS	18
2.1 ELECTRICAL PARTS.....	18
2.2 UPPER CONTROL PARTS.....	19
2.3 LOWER CONTROL PARTS	20
2.4 MAIN CABLE SUBPARTS	21
2.5 SELECTOR SWITCH SUBPARTS.....	22
2.6 E-STOP SWITCH SUBPARTS.....	22
2.7 MASTER POWER SWITCH SUBPARTS.....	23
2.8 KEY SWITCH SUBPARTS	23
SECTION 3 SCISSORS	24
3.1 SCISSORS PARTS.....	24
3.2 CYLINDER SUBPARTS	26
SECTION 4 PLATFORM & RAILS.....	28
SECTION 5 DECALS.....	30
SECTION 6 OPTIONS & MISCELLANEOUS	32

INDEX OF FIGURES

FIGURE 1: Pothole Guard Parts.....	6
FIGURE 2: Pothole Actuator Subparts	7
FIGURE 3: Caster Parts.....	8
FIGURE 4: Caster Subparts	9
FIGURE 5: Rear Wheel Subparts	10
FIGURE 6: Drive Parts.....	11
FIGURE 7: Drive Subparts	12
FIGURE 8: Brake Subparts.....	13
FIGURE 9: Pump Parts	14
FIGURE 10: Pump Subparts	15
FIGURE 11: Miscellaneous Parts.....	16
FIGURE 12: Electrical Parts.....	18
FIGURE 13: Upper Control Parts.....	19
FIGURE 14: Lower Control Parts	20
FIGURE 15: Main Cable Subparts	21
FIGURE 16: Selector Switch Subparts	22
FIGURE 17: E-Stop Switch Subparts.....	22
FIGURE 18: Master Power Switch Subparts.....	23
FIGURE 19: Key Switch Subparts	23
FIGURE 20: Scissors Parts	24
FIGURE 21: Cylinder Subparts	26
FIGURE 22: Platform & Rails	28
FIGURE 23: Decals	30
FIGURE 24: Options & Miscellaneous.....	32

1.1 | POTHOLE GUARD PARTS

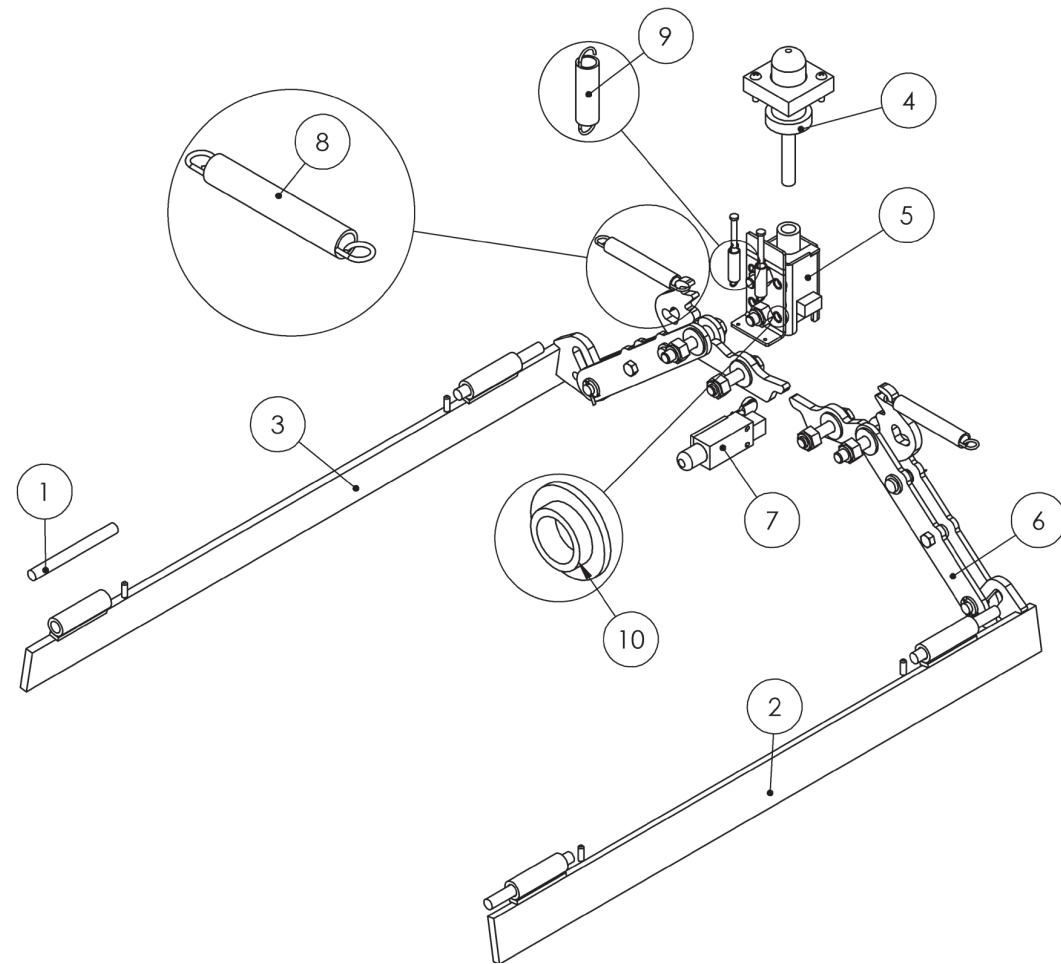


FIGURE 1: Pothole Guard Parts

Item #	Part Number	Part Description	Notes	Qty	Superseded By
1	RND-HB-002-P	PIN,HINGE,0.50,5.0		1	
2	129-01-035-01	BASE,PH BAR L (HBMD)		1	
3	129-01-037-01	BASE,PH BAR R (HBMD)		1	
4	129-21-001-83-K	ASM,BASE PH ACT		1	
5	129-21-001-84-K	ASM,BASE PH LOCK		1	
6	129-21-001-92-K	ASM,BASE PH ARMS		1	
7	ELEC-123-5	SWITCH,LIMIT,ROT LVR,NO/NC PO		1	
8	HARD-701	SPRING,EXT 5.5X.69,OD		2	
9	HARD-703	SPRING,EXT 2.25X.50,OD		2	
10	HARD-626	0.38X0.50X0.19 SLD WASH,NYL W	Superseded;	1	HARD-626-3
10	HARD-626-3	0.38X0.50C.0.19 SHLD WASH,NYL B		1	

1.2 | POTHOLE ACTUATOR SUBPARTS

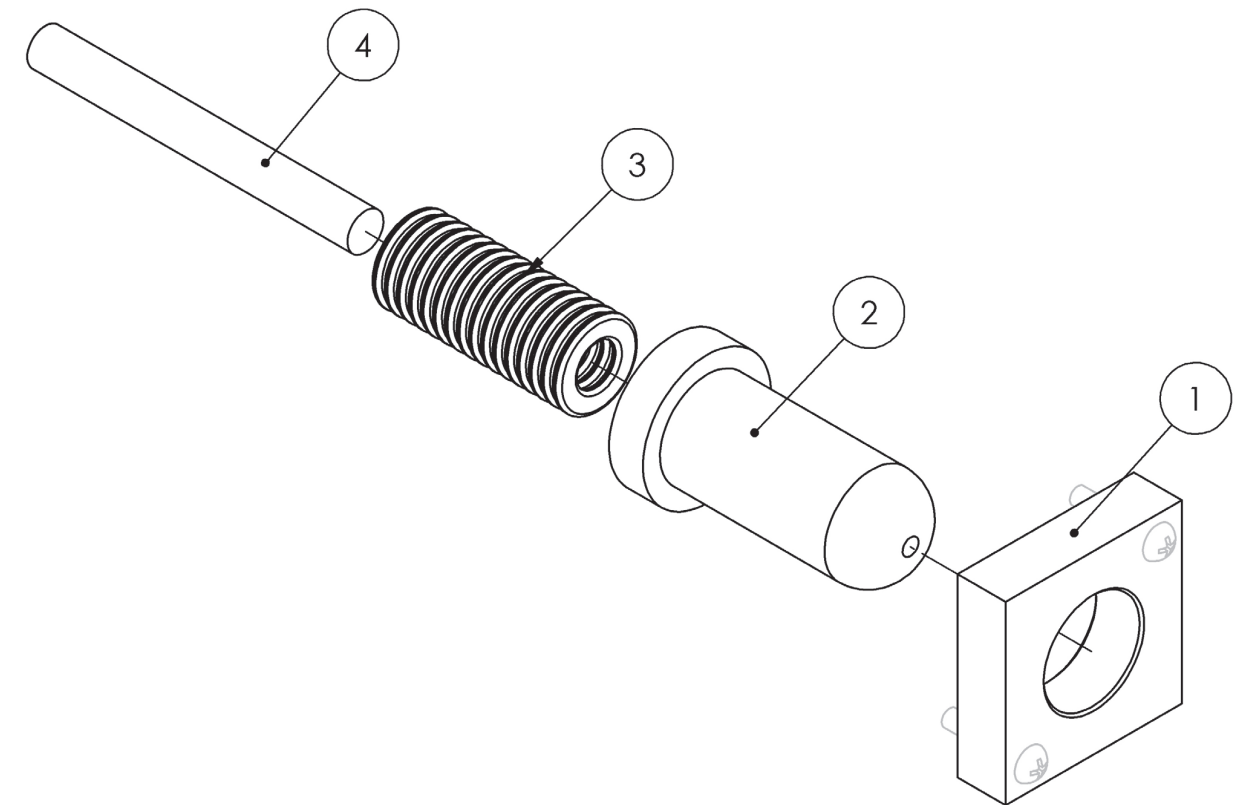


FIGURE 2: Pothole Actuator Subparts

Item #	Part Number	Part Description	Notes	Qty	Superseded By
1	HB-PH-13	BASE,PH GUIDE BLOCK-1.5 ID		1	
2	129-01-040-04	BASE,PH RET SLEEVE		1	
3	HARD-654	SPRING,COMP,3 X 1.25,OD		1	
4	HB-M220-P	PH PLUNGER ROD		1	

1.3 | CASTER PARTS

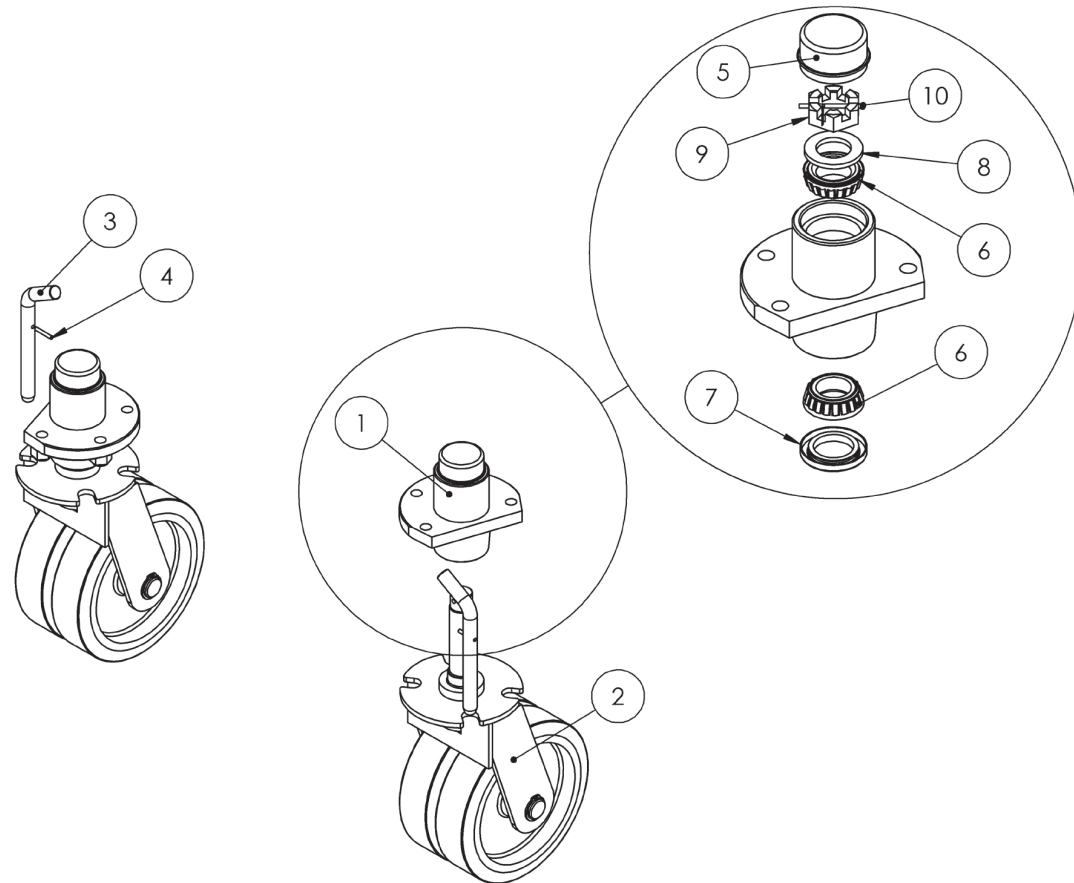


FIGURE 3: Caster Parts

Item #	Part Number	Part Description	Notes	Qty	Superseded By
1	WHEE-714-05	HUB, W/1-1/8 BEARING, 4.5 BC		1	
2	129-21-001-91-K	ASM,CASTER		1	
3	129-01-101-05	HITCH PIN,5/8 X 5		2	
4	129-01-102-03	COILED SPRING PIN, 5/32,1 L		2	
5	WHEE-714-100	1.75 HUB,COVER		1	
6	WHEE-718	1.06X0.58 TAPER ROLL BEARING		2	
7	WHEE-717	SEAL		1	
8	WHEE-716	1.06X1.75X0.16 WASH		1	
9	WHEE-719	1-14 HEX SLOTTED AXLE NUT		1	
10	HARD-725	COTTER PIN, 3/16 X 2		1	

1.4 | CASTER SUBPARTS

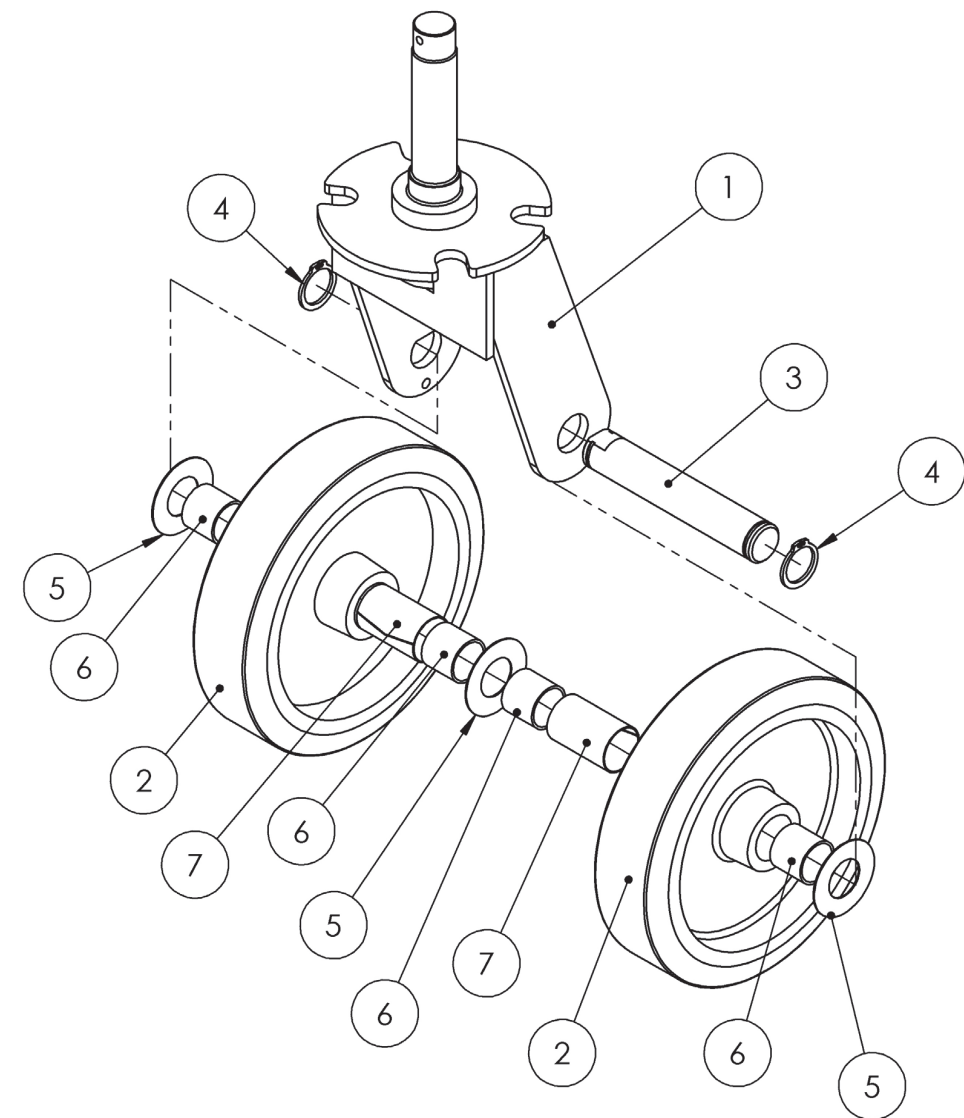


FIGURE 4: Caster Subparts

Item #	Part Number	Part Description	Notes	Qty	Superseded By
1	129-01-071-01	BASE,CASTER WLDMNT		1	
2	WHEE-706-KIT	WHL,8X2,GREY NM BORE 1.25		2	
3	129-06-023-02	BASE,CASTER PIN		1	
4	HARD-021	1.00 RETAINING RING,EXT		2	
5	WHEE-609-SS	1.02X2.00X0.03 WASH,S		3	
6	HARD-001-2	1.00X1.00 SLEEVE BEARING,PTFE		4	
7	WHEE-708	2.00 WHL, RACEWAY SPLIT		2	

1.5 | REAR WHEEL SUBPARTS

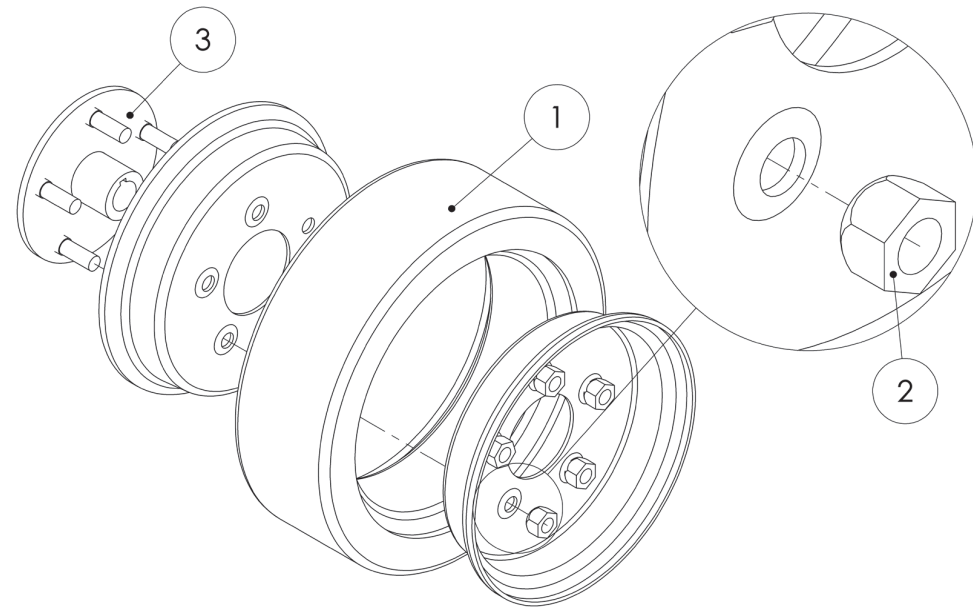


FIGURE 5: Rear Wheel Subparts

Item #	Part Number	Part Description	Notes	Qty	Superseded By
1	WHEE-617	WHL,12X4,NM RUBBER		1	
2	WHEE-721	WHL,LUG NUT 1/2-20		5	
3	WHEE-730-02-KIT	HUB,KEYWAY 1.0,2.0		1	

1.6 | DRIVE PARTS

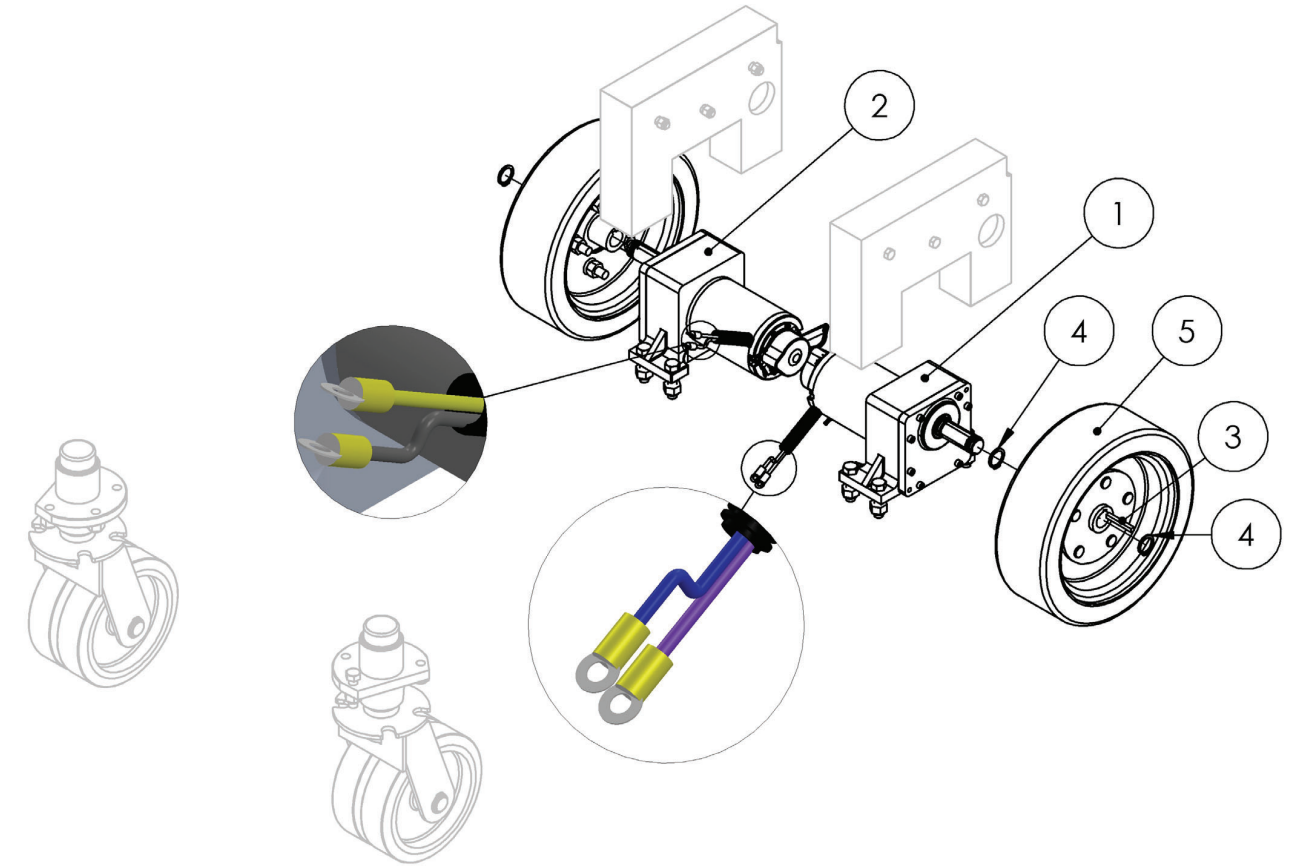


FIGURE 6: Drive Parts

Item #	Part Number	Part Description	Notes	Qty	Superseded By
1	ELEC-626-5B-KIT	DRIVE MOTOR,24VELE,HB DUM,L	BLUE/VIOLET LEADS	1	
1	ELEC-626-5R-KIT	DRIVE MOTOR,24VELE,HB DUM,L	Superseded: BLUE/VIOLET LEADS	1	ELEC-626-5B-KIT
2	ELEC-626-5A-KIT	DRIVE MOTOR,24VELE,HB DUM,R	GREY/YEL LEADS	1	
2	ELEC-626-5L-KIT	DRIVE MOTOR,24VELE,HB DUM,R	Superseded: GREY/YEL LEADS	1	ELEC-626-5A-KIT
3	HARD-157	0.25X0.25x2.00 KEY		2	
4	HARD-021	1.00 RETAINING RING,EXT		4	
5	WHEE-618-KIT	WHL,12X4 NM RUBBER W/HUB		2	

1.7 | DRIVE SUBPARTS

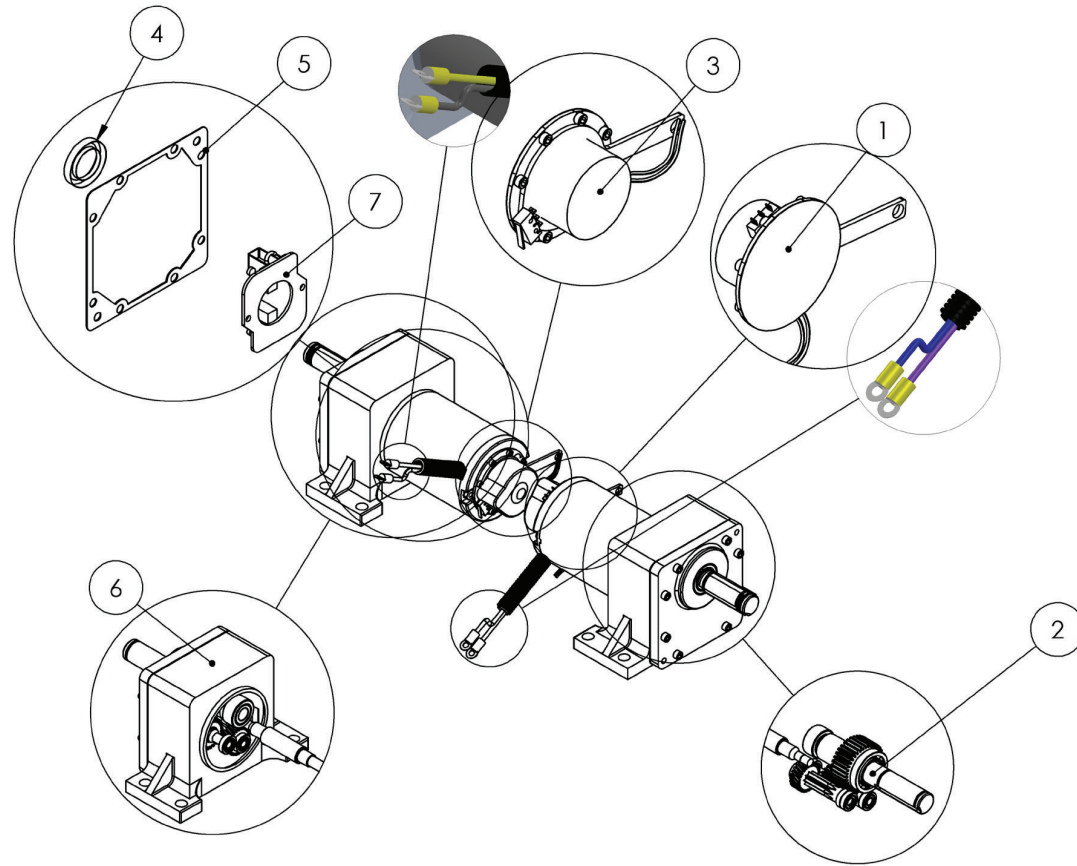


FIGURE 7: Drive Subparts

Item #	Part Number	Part Description	Notes	Qty	Superseded By
1	ELEC-627-5R	DRIVE MOTOR,BRAKE	DUMORE: HOUSING ALL SILVER, LEFT BRAKE ON HB-1230	1	
2	ELEC-626-4G	DRIVE MOTOR GEARS,HB,DUM		1	
3	ELEC-627-5L	DRIVE MOTOR,BRAKE	DUMORE: HOUSING ALL SILVER, RIGHT BRAKE ON HB-1230	1	
4	ELEC-626-4A	DRIVE MOTOR SHAFT SEAL,DUM		1	
5	ELEC-626-4B	DRIVE MOTOR HOUSING GASKET,DUM		1	
6	ELEC-626-4C	DRIVE MOTOR GEARBOX,DUM		1	
7	ELEC-626-4BRUSH	BRUSH KIT,DUMORE		1	

1.8 | BRAKE SUBPARTS

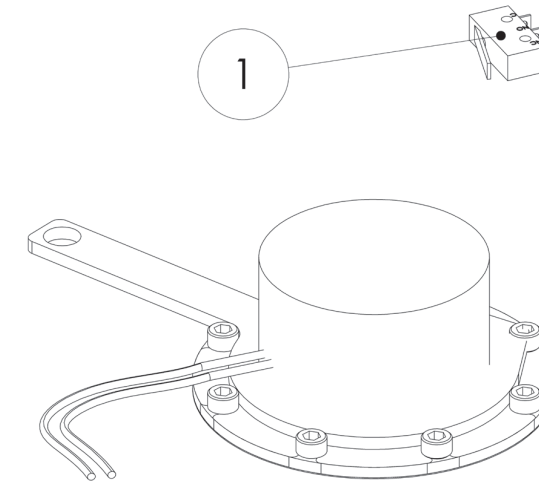


FIGURE 8: Brake Subparts

Item #	Part Number	Part Description	Notes	Qty	Superseded By
1	ELEC-126-7-KIT	SWITCH,LIMIT,STRAIGHT LVR MICR	DUMORE: HOUSING ALL SILVER	1	

1.9 | PUMP PARTS

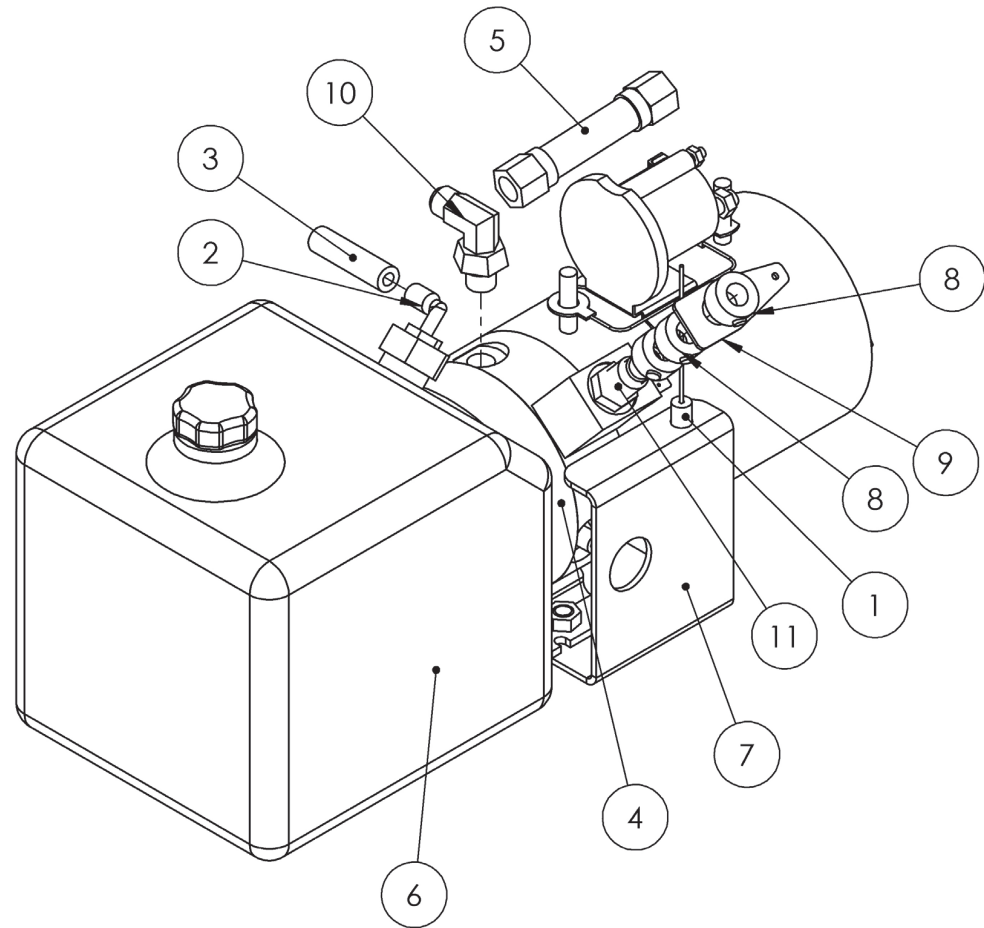


FIGURE 9: Pump Parts

Item #	Part Number	Part Description	Notes	Qty	Superseded By
1	HARD-644-04	LOW FRICTION CABLE, 43/52		1	
2	HYDR-019	FITTING,ELB,NPTM 3/8-1/4 PUSH		1	
3	HYDR-022-3	LOW PRESSURE HOSE	Quantity in inches	132	
4	HYDR-050-9	PUMP,24VDC,0.125,0.88,1.75	Entire pump	1	
5	HYDR-600-12	HOSE ASM,PRECUT HB1230		1	
6	HYDR-032	HYDRAULIC OIL	Not available as a replacement part. Replace with Flomite #150, Dexron II, Mobil-DTE 2 or equivalent 32 weight implement oil.	1	
7	129-01-104-01	BASE,E-DOWN BRKT		1	
8	HARD-650	0.44X0.88X0.44 SHAFT COLLAR		3	
9	LAS-M115	SCISSOR,PLATE E-DOWN ACT		1	
10	HYDR-677	FITNG,ELB,JICM 9/16-SAEORM #6		1	
11	HARD-621	BUSHING,.44,.63,.750	May replace 2 pcs. HARD-650 at cable mnt	1	

1.10 | PUMP SUBPARTS

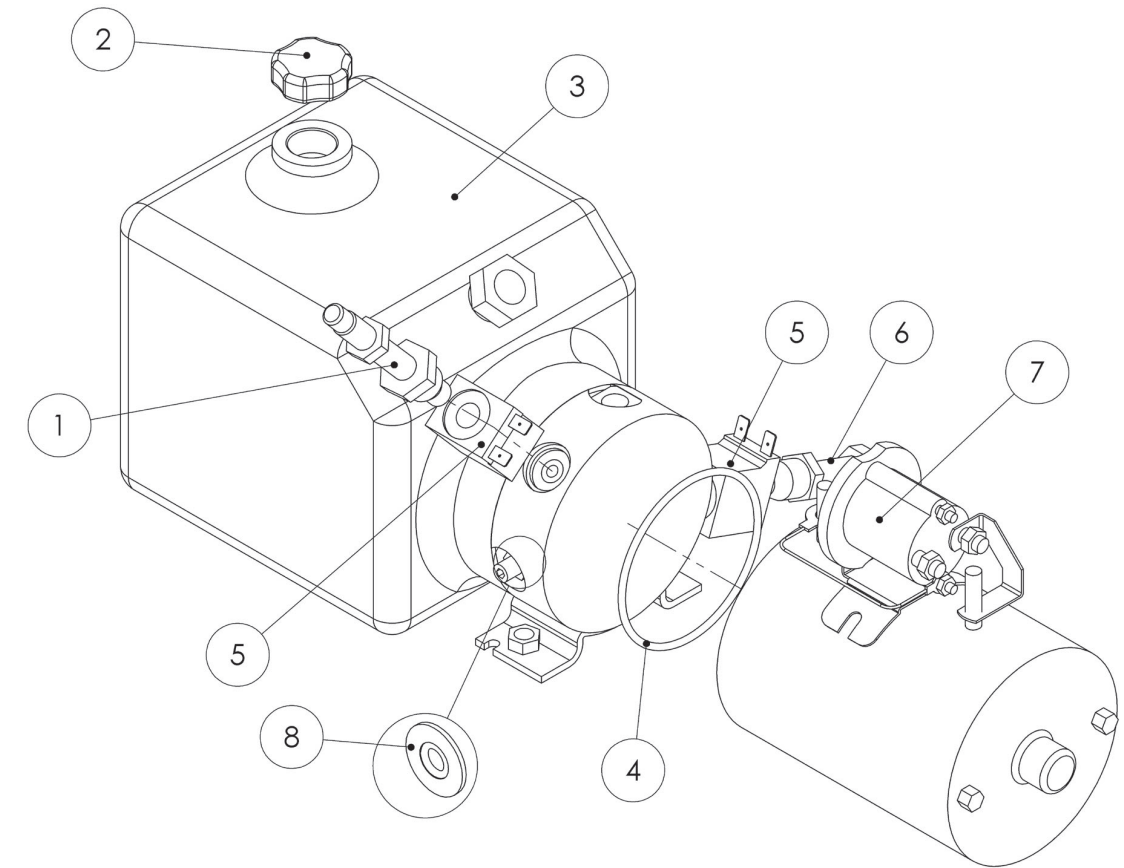
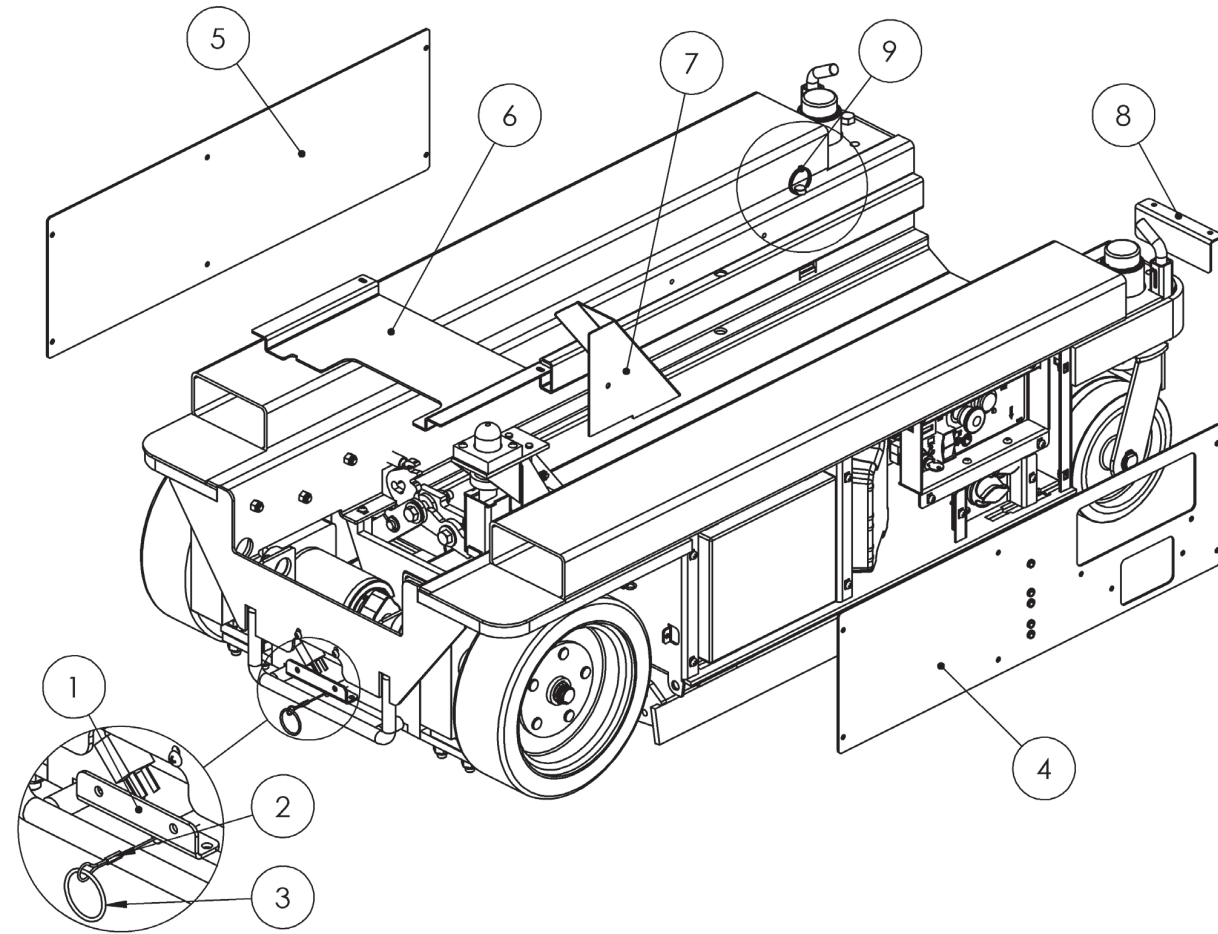


FIGURE 10: Pump Subparts

Item #	Part Number	Part Description	Notes	Qty	Superseded By
1	HYDR-007-2E-5	VALVE,NC,2W/2P,#8,DWN,PULL,DEL		1	
2	HYDR-042	PUMP RESERVOIR CAP		1	
3	HYDR-067-3	PUMP RESERVOIR,0.88 GAL		1	
4	HYDR-068	PUMP RESERVOIR O-RING		1	
5	HYDR-664	COIL,18V		2	
6	HYDR-665	VALVE,NO,2W/2P,#8,UP		1	
7	HYDR-666-1	SOLENOID,24V,ISOLATED,SPST		1	
8	HYDR-667	WASH,0.38 ID,0.75 OD,PRES SEAL		1	

1.11 | MISCELLANEOUS BASE PARTS



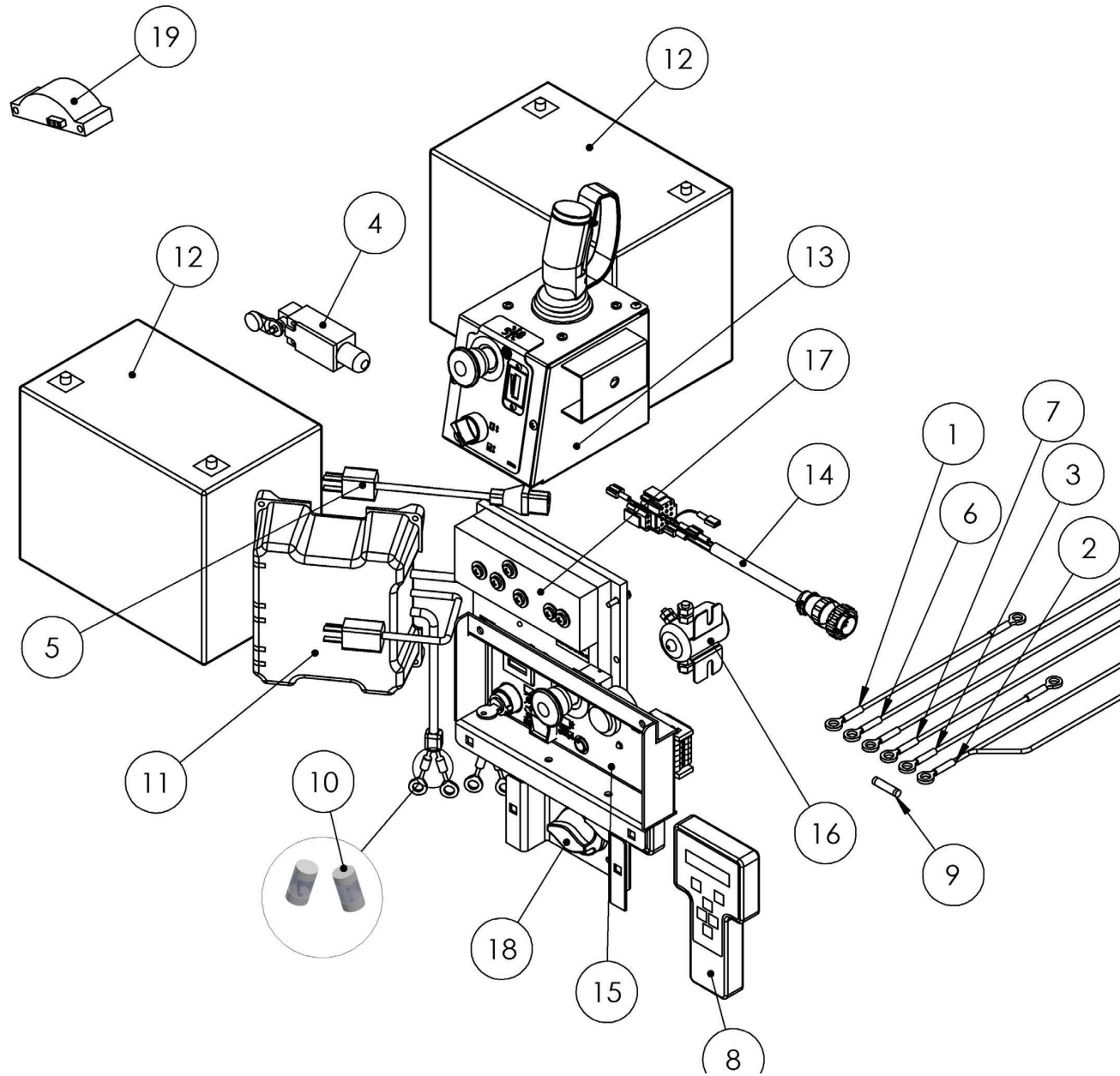
THIS PAGE WAS INTENTIONALLY LEFT BLANK

FIGURE 11: Miscellaneous Base Parts

Item #	Part Number	Part Description	Notes	Qty	Superseded By
1	129-01-105-01	BASE,E-DOWN BRKT REAR		1	
2	HARD-644-04	LOW FRICTION CABLE, 43/52		1	
3	HARD-651	1.40 ID,RING		1	
4	129-21-001-80-K	ASM,BASE COVER R		1	
5	129-21-001-81-K	ASM,BASE COVER L		1	
6	129-01-075-01	BASE,MOTOR COVER PLATE		1	
7	129-01-083-01	BASE,COVER LIMIT SWITCH		1	
8	129-05-009-01	COVER,TUBE CAP		1	
9	HARD-691	0.63 PIN,QUICK RELEASE		2	

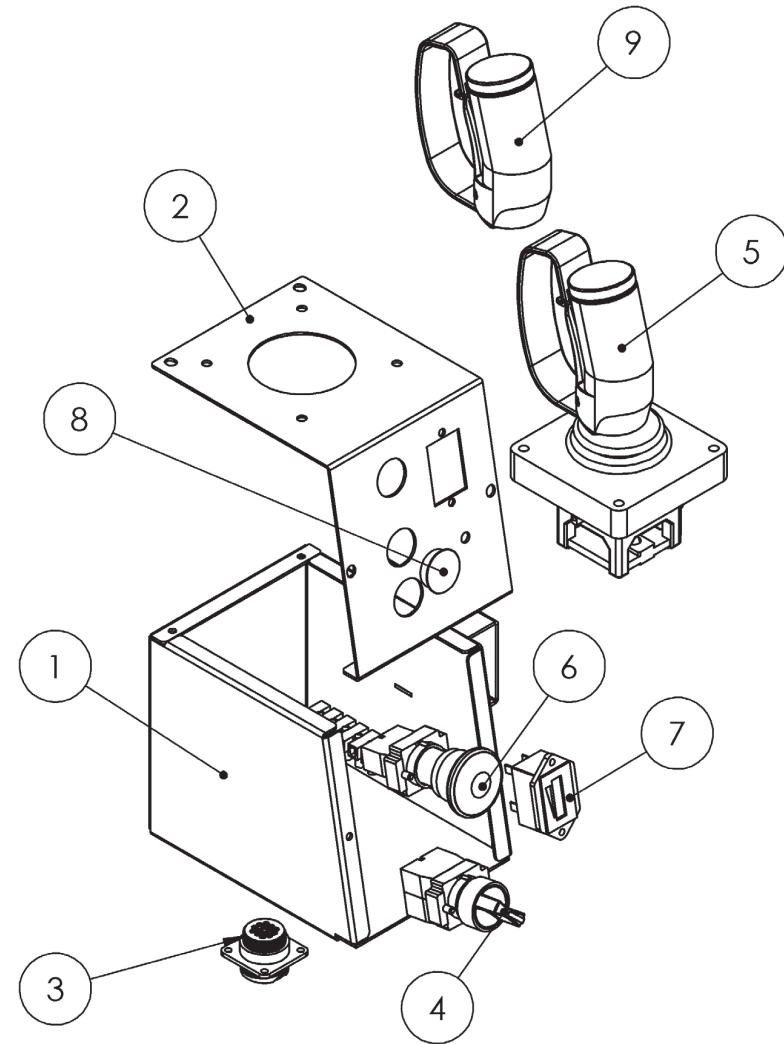
SECTION 2 | CONTROLS

2.1 | ELECTRICAL PARTS



Item #	Part Number	Part Description	Notes	Qty	Superseded By
1	129-01-090-50	CABLE,6GA,RED,10,R/R,,38 EYES		1	
2	129-01-090-51	CBL,6GA,RED,42&50,R/R,,38 EYES		1	
3	ELEC-080	CABLE,6GA,BLACK,8.0,B/B		1	
4	ELEC-123-5	SWITCH,LIMIT,ROT LVR,NO/NC PO		1	
5	ELEC-639-3	CORD,NEMA 515/IEC C13,36		1	
6	ELEC-641A	CABLE,6GA,BLACK,63,B/B		2	
7	ELEC-641C	CABLE,6GA,RED,50,B/R		1	
8	ELEC-646-2	TOOL,PGT PROGRAMMER,EZ-CAL		1	
9	ELEC-670-2	FUSE 20 AMP AGC		1	
10	ELEC-670-6	FUSE 30 AMP,PCS		2	
11	ELEC-747	CHARGER,24V	PCS	1	
12	ELEC-047-6	BATTERY,12V,GR24 AGM		2	
14	129-21-007-50	CTL,WIRE HARNESS MAIN HB-1230		1	
13	129-21-006-50	ASM,CTL UPR		1	
13	129-21-249-50	ASM,CTL UPR	MAY BE SUBSTITUTED FOR 129-21-006-50 BUT LED WOULD NOT BE FUNCTIONAL	1	
15	129-21-004-50	ASM,CTL LWR (HBMD S1)		1	
16	HYDR-666	SOLENOID,24V,ISOLATED,SPST		1	
17	129-21-010-50	BOARD,DRIVE/LIFT CTL HBMD ZTR		1	
18	ELEC-633-4	SWITCH,MASTER DISCONNECT		1	
19	ELEC-647	SENSOR,ANGLE		1	
20	WD-129-20-001-50	WD,HB-1230 S1	WIRING DIAGRAM	1	
21	WS-129-20-001-50	ELEC SCH,HB-1230 S1	ELECTRICAL SCHEMATIC	1	

2.2 | UPPER CONTROL PARTS



THIS PAGE WAS INTENTIONALLY LEFT BLANK

FIGURE 13: Upper Control Parts

Item #	Part Number	Part Description	Notes	Qty	Superseded By
1	129-03-202-01	RAIL,CTL BOX		1	
2	129-03-201-01	RAIL,CTL UPR PANEL		1	
3	129-21-006-90	CTL,WIRE HARNESS,UPR CTL		1	
4	ELEC-002C-KIT	SWITCH,ROTARY MAINTAINED		1	
5	ELEC-606	JOYSTICK,MULTI-AXIS	Superseded;	1	ELEC-609
5	ELEC-609	JOYSTICK,MULTI-AXIS W/GUARD		1	
6	ELEC-071-KIT	BUTTON,PUSH/PULL RED E-STOP		1	
7	ELEC-610-4	METER,VOLT,24V		1	
8	HARD-706	PLUG,0.88 DIA,BLACK		1	
9	ELEC-609-KIT	JOYSTICK,MULTI-AXIS GUARD KIT		1	
10	WD-129-21-006-50	WD,UPR CTL HB-1230 S1	WIRING DIAGRAM	1	

2.3 | LOWER CONTROL PARTS

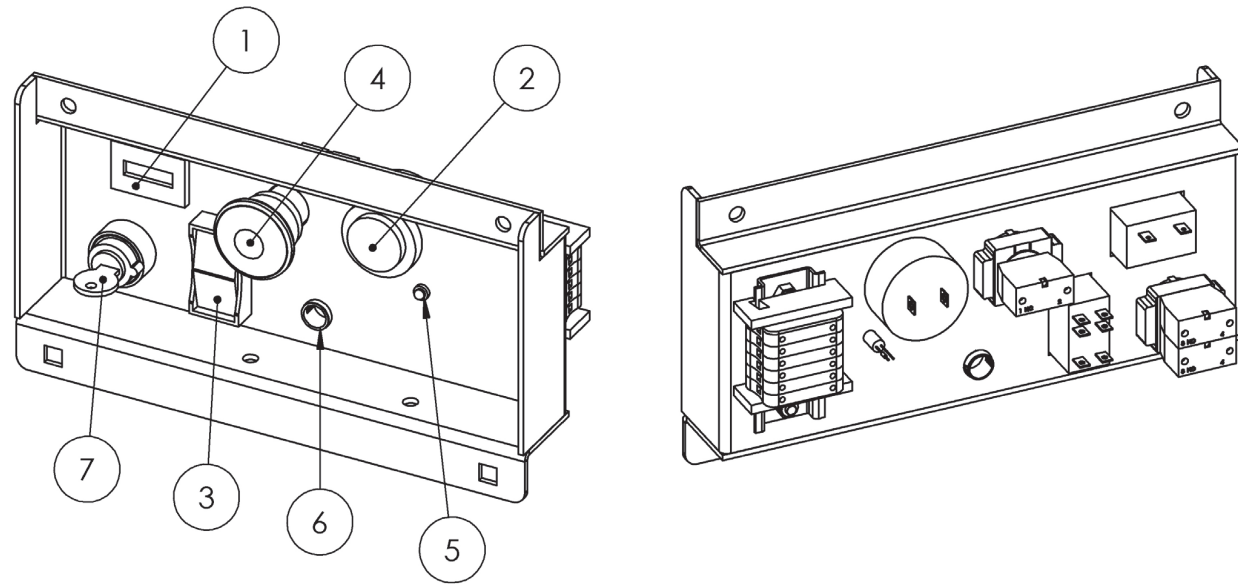


FIGURE 14: Lower Control Parts

Item #	Part Number	Part Description	Notes	Qty	Superseded By
1	ELEC-610-2	METER,HOUR		1	
2	ELEC-635-4	ALARM, CONTINUOUS		1	
3	ELEC-133B	SWITCH,ROCKER DPDT		1	
4	ELEC-071-KIT	BUTTON,PUSH/PULL RED E-STOP		1	
5	ELEC-636	LED, RED		1	
6	HARD-692	PLUG,0.50 DIA,TRANSPARENT		1	
7	ELEC-073D-KIT	SWITCH,KEY,3-POS MAINTAINED		1	
8	WD-129-21-004-50	WD,LWR CTL HB-1230 S1	WIRING DIAGRAM	1	

2.4 | MAIN CABLE SUBPARTS

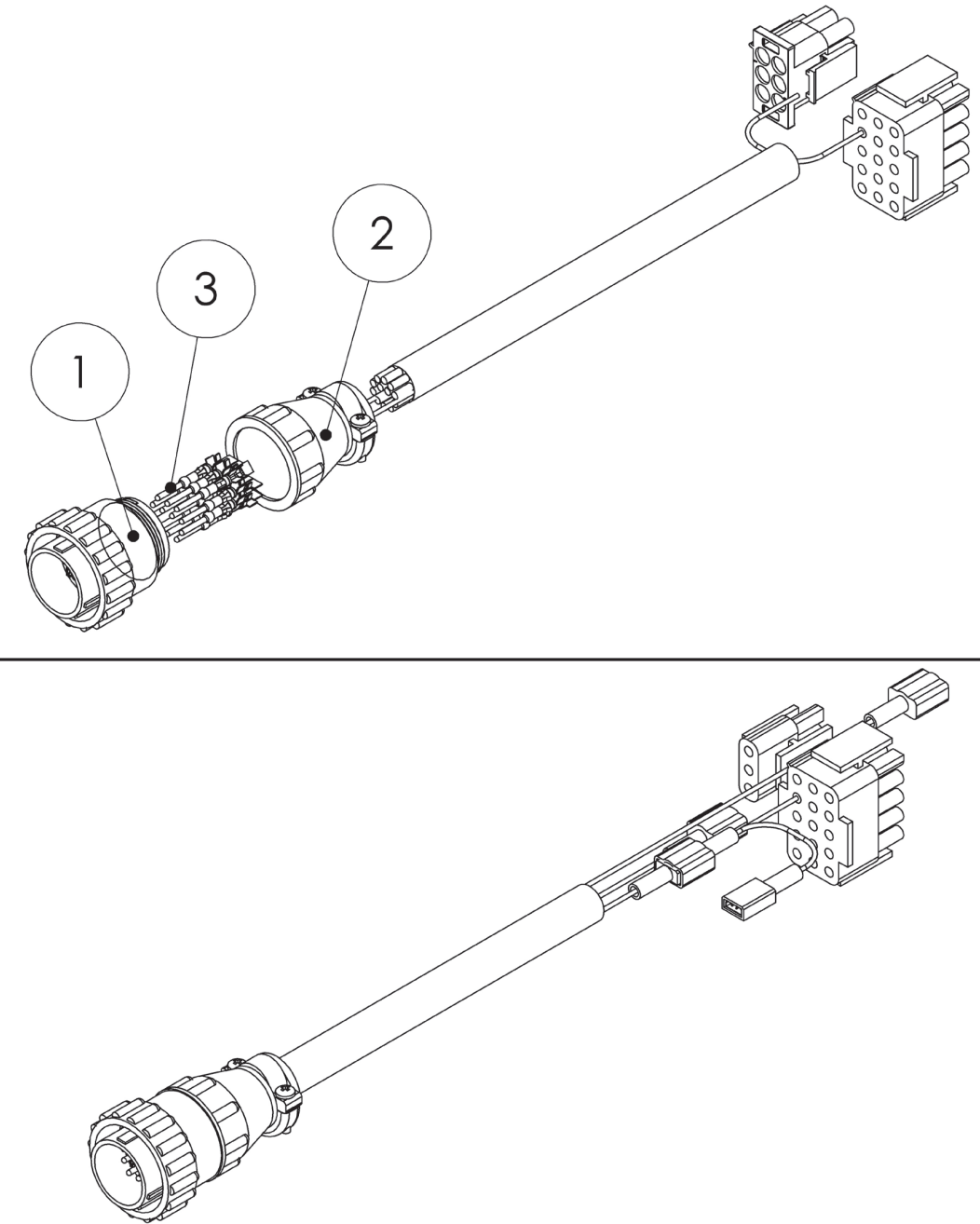


FIGURE 15: Main Cable Subparts

Item #	Part Number	Part Description	Notes	Qty	Superseded By
1	ELEC-749	CONN,CPC,PLUG,14 POS		1	
2	ELEC-750	CABLE CLAMP,CPC,BACK SHELL		1	
3	ELEC-752	CONTACT PIN,CPC,14-18GA TIN		12	

2.5 | SELECTOR SWITCH SUBPARTS

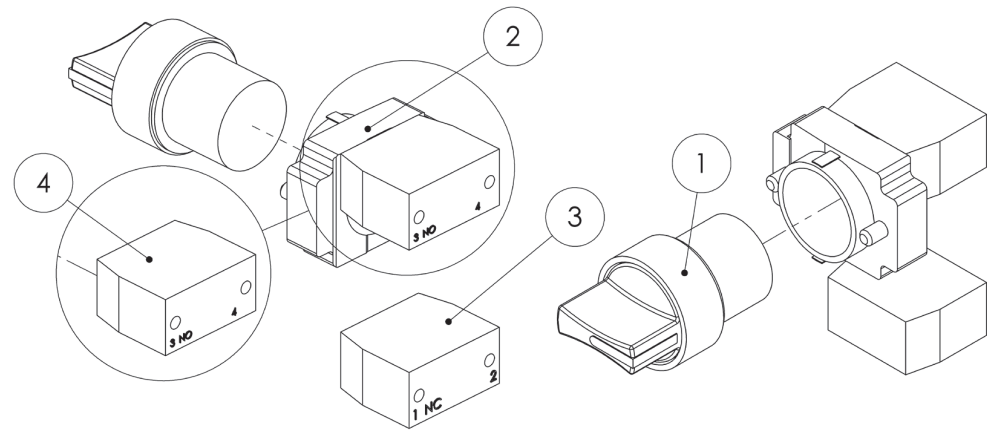


FIGURE 16: Selector Switch Subparts

Item #	Part Number	Part Description	Notes	Qty	Superseded By
1	ELEC-002C	SWITCH,ROTARY,MAINTAINED		1	
2	ELEC-871-KIT	CONTACT BLOCK,NO W/BASE		1	
3	ELEC-072	CONTACT BLOCK,NC		1	
4	ELEC-603	CONTACT BLOCK,NO		1	

2.6 | E-STOP SWITCH SUBPARTS

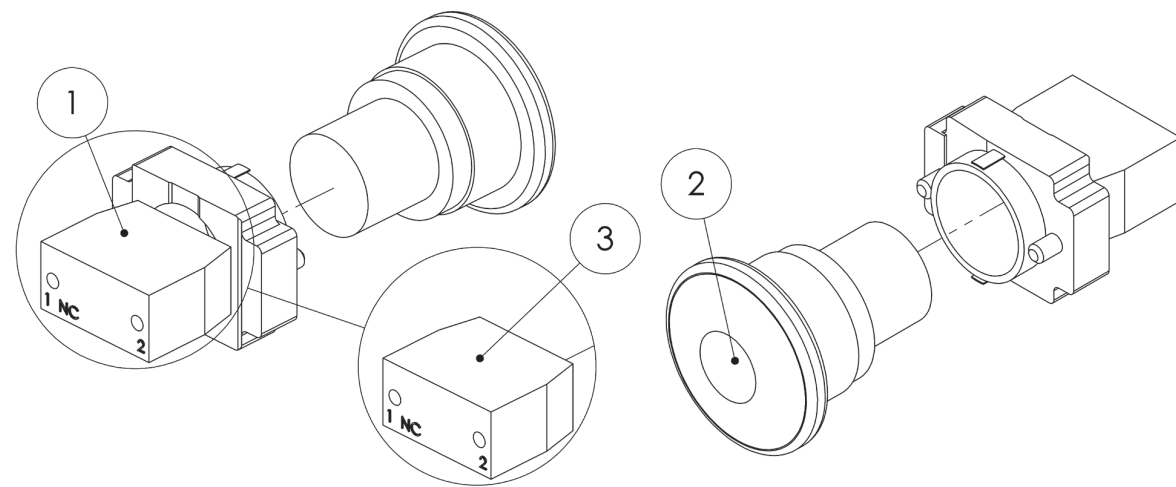


FIGURE 17: E-Stop Switch Subparts

Item #	Part Number	Part Description	Notes	Qty	Superseded By
1	ELEC-872-KIT	CONTACT BLOCK,NC W/BASE		1	
2	ELEC-071	BUTTON,PUSH/PULL RED E-STOP		1	
3	ELEC-072	CONTACT BLOCK,NC		1	

2.7 | MASTER POWER SWITCH SUBPARTS

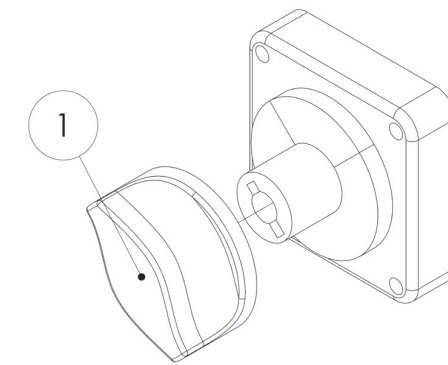


FIGURE 18: Master Power Switch Subparts

Item #	Part Number	Part Description	Notes	Qty	Superseded By
1	ELEC-633-5	SWITCH KNOB,MASTER DISCONNECT		1	

2.8 | KEY SWITCH SUBPARTS

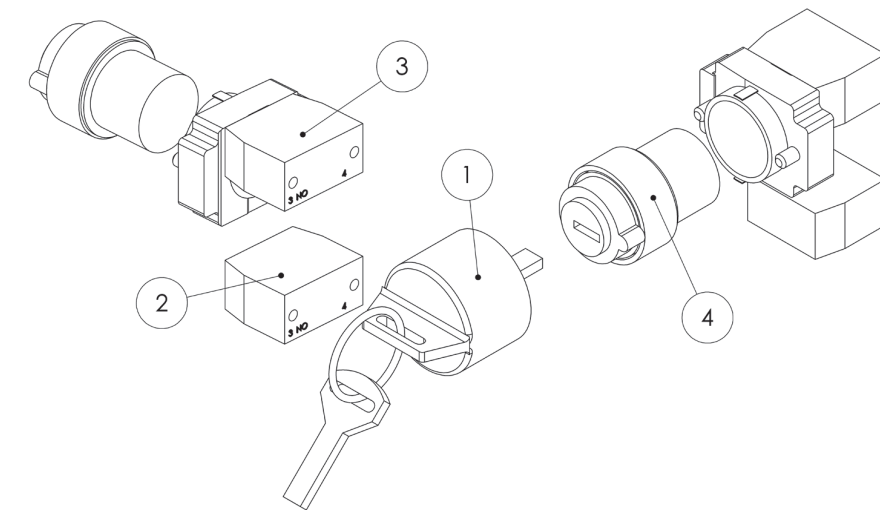


FIGURE 19: Key Switch Subparts

Item #	Part Number	Part Description	Notes	Qty	Superseded By
1	ELEC-073EKEY	KEY,SPARE		1	
2	ELEC-603	CONTACT BLOCK,NO		1	
3	ELEC-871-KIT	CONTACT BLOCK,NO W/BASE		1	
4	ELEC-073D	SWITCH,KEY,3-POS MAINTAINED		1	

3.1 | SCISSORS PARTS

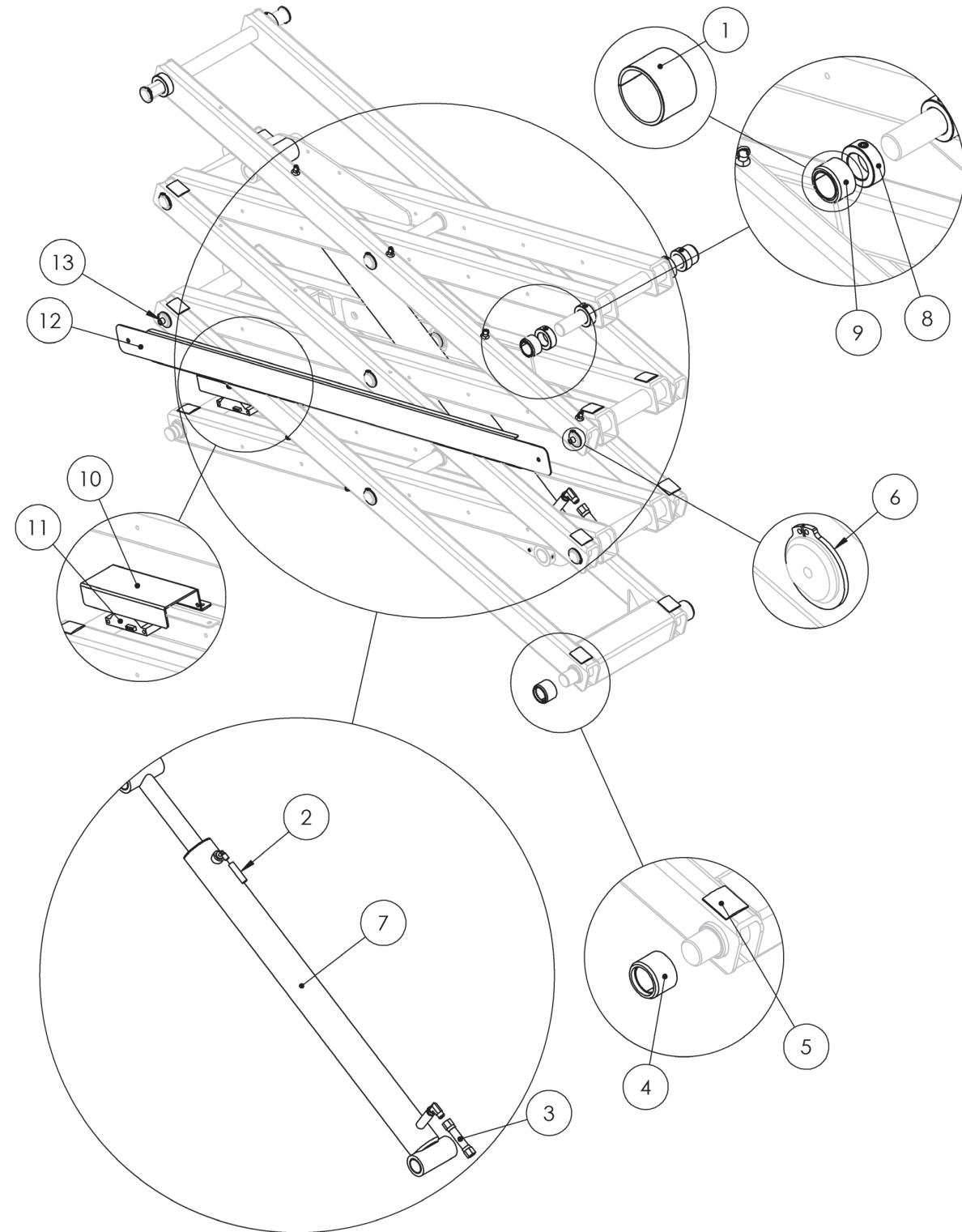
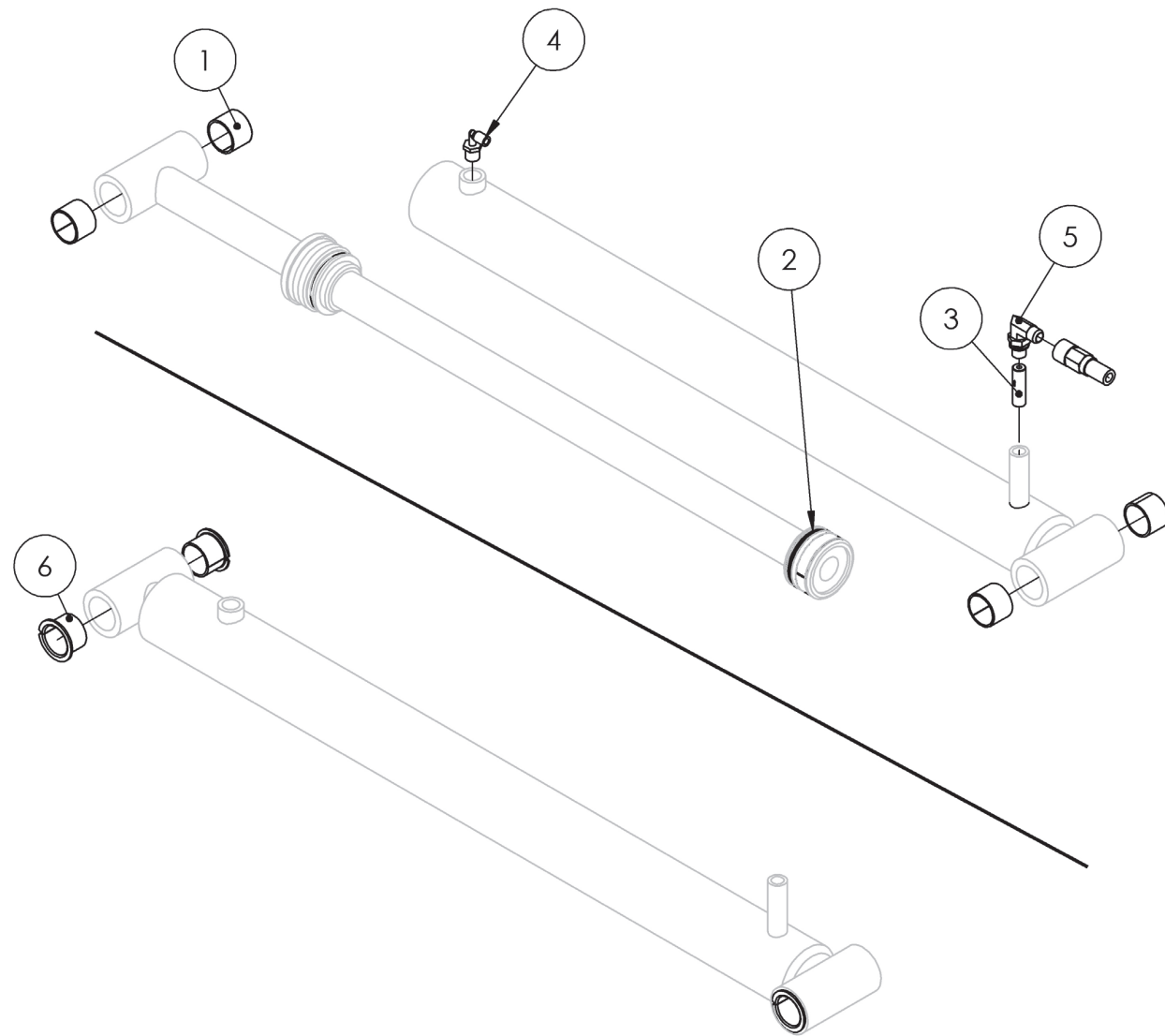


FIGURE 20: Scissors Parts

Item #	Part Number	Part Description	Notes	Qty	Superseded By
1	HARD-001	1.25X1.00 SLEEVE BEARING,PTFE		1	
2	HYDR-022-3	LOW PRESSURE HOSE	Quantity in inches	132	
3	HYDR-600-12	HOSE ASM,PRECUT HB1230		1	
4	129-21-009-50-K	ASM,ROLLER,1.25 W/DU		2	
5	MISC-007-001-KIT	1 3/8 MOLDING BOND		12	
6	HARD-022	1.25 RETAINING RING,EXT		18	
7	129-21-002-90-K	ASM,SCISSOR CYL HB12-ANSI		1	
8	1021000102	SET COLLAR,1.25 ID		6	
9	BM-6006-1-KIT	ASM,ROLLER,1.00 W/DU		2	
10	129-02-023-01	SCISSOR, ANG SENSOR MNT		1	
11	ELEC-647	SENSOR,ANGLE		1	
12	129-02-027-01	SCISSOR,CONDUIT		1	
13	HARD-663	0.25X0.50X0.38 SPACER,NYL		2	

3.2 | CYLINDER SUBPARTS



THIS PAGE WAS INTENTIONALLY LEFT BLANK

FIGURE 21: Cylinder Subparts

Item #	Part Number	Part Description	Notes	Qty	Superseded By
1	HARD-001	1.25X1.00 SLEEVE BEARING,PTFE		4	
2	HYDR-012-SK	CYL,SEAL KIT 2.5 B,1.5 R		1	
3	HYDR-033	VELOCITY FUSE-7.0 GPM		1	
4	HYDR-019	FITTING,ELB,NPTM 3/8-1/4 PUSH		1	
5	HYDR-035	FITTING,ELB,JICM9/16-SAEORM#6		1	
6	HARD-003	1.25X1.00 FLNGE BEARING,PTFE		4	

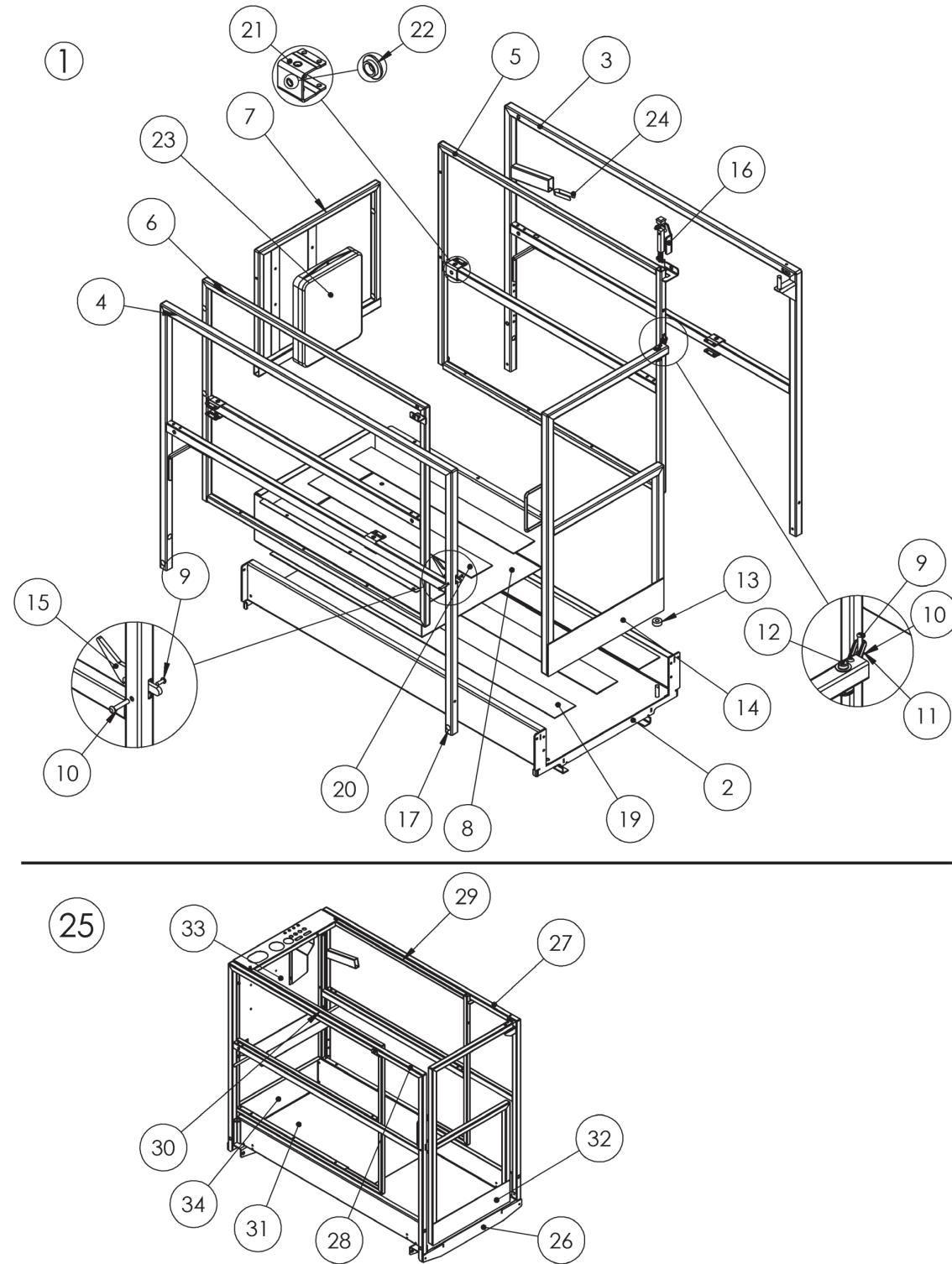


FIGURE 22: Platform & Rails

Item #	Part Number	Part Description	Notes	Qty	Superseded By
1	129-21-003-50-K	ASM,RAIL HB-MID	Superseded; Top rail 43.3 in. above platform floor.	1	129-21-320-50-K
2	129-04-001-01	PF,WLDMNT	Top rail 43.3 in. above platform floor.	1	
3	129-03-050-01	RAIL,WC R	Top rail 43.3 in. above platform floor.	1	
4	129-03-051-01	RAIL,WC L	Top rail 43.3 in. above platform floor.	1	
5	129-03-052-01	RAIL,SO R	Top rail 43.3 in. above platform floor.	1	
6	129-03-053-01	RAIL,SO L	Top rail 43.3 in. above platform floor.	1	
7	129-03-055-01	RAIL,SO END	Superseded;	0	129-21-320-50-K
8	129-03-024-01	RAIL, SO FLOOR BOLT-ON	Top rail 43.3 in. above platform floor.	1	
9	SCREW-1100	10-24 X 0.50 PAN HEAD SCRW		3	
10	HARD-649	0.25 X 1.25 BARREL SCRW,10-24		3	
11	HARD-606-2	ORING,0.25 X 5		1	
12	HARD-656-1	QUICK NUT-1/2 ROD		1	
13	143-04-007-04	SPACER,.5ID,1.25OD, 0.5 THK		1	
14	129-03-054-01	RAIL,GATE		1	
15	1000307601	RAIL,GATE LATCH		1	
16	1002100692-KIT	ASM,RAIL SLIDE LOCK		1	
17	HARD-645	PLUG,0.69 DIA,BLACK		22	
18	HARD-626	0.38X0.50X0.19 SLD WASH,NYL W	Superseded;	0	HARD-626-3
19	MISC-031-11-KIT	ANTI-SLIP TAPE,4.00,54.00 LENG		3	
20	MISC-031-01-KIT	ANTI-SLIP TAPE,4.00,31.00 LENG		3	
21	LAS-M078-1-KIT	RAIL,SO CHANNEL		1	
22	HARD-626-3	0.38X0.50C.0.19 SHLD WASH,NYL B		26	
23	HARD-603	MANUAL BOX		1	
24	HARD-067	0.38 SNAP BUTTON,SINGLE END		1	
25	129-21-320-50-K	ASM,RAIL HB-MID	Entire assembly, Top rail 43.9 in. above platform floor.	1	
26	129-04-201-01	PF,WLDMNT	Applicable if rail set has been replaced. Top rail 43.9 in. above platform floor.	1	
27	129-03-209-01	RAIL,WC R	Applicable if rail set has been replaced. Top rail 43.9 in. above platform floor.	1	
28	129-03-203-01	RAIL,WC L	Applicable if rail set has been replaced. Top rail 43.9 in. above platform floor.	1	
29	129-03-212-01	RAIL,SO R	Applicable if rail set has been replaced. Top rail 43.9 in. above platform floor.	1	
30	129-03-214-01	RAIL,SO L	Applicable if rail set has been replaced. Top rail 43.9 in. above platform floor.	1	
31	129-03-208-01	RAIL, SO FLOOR BOLT-ON	Applicable if rail set has been replaced. Top rail 43.9 in. above platform floor.	1	
32	129-03-222-01	RAIL,GATE	Applicable if rail set has been replaced. Top rail 43.9 in. above platform floor.	1	
33	129-21-321-50-K	ASM,RAIL TOOL TRAY		1	
34	129-03-211-01	RAIL, SO TOE BOARD	Applicable if rail set has been replaced. Top rail 43.9 in. above platform floor.	1	

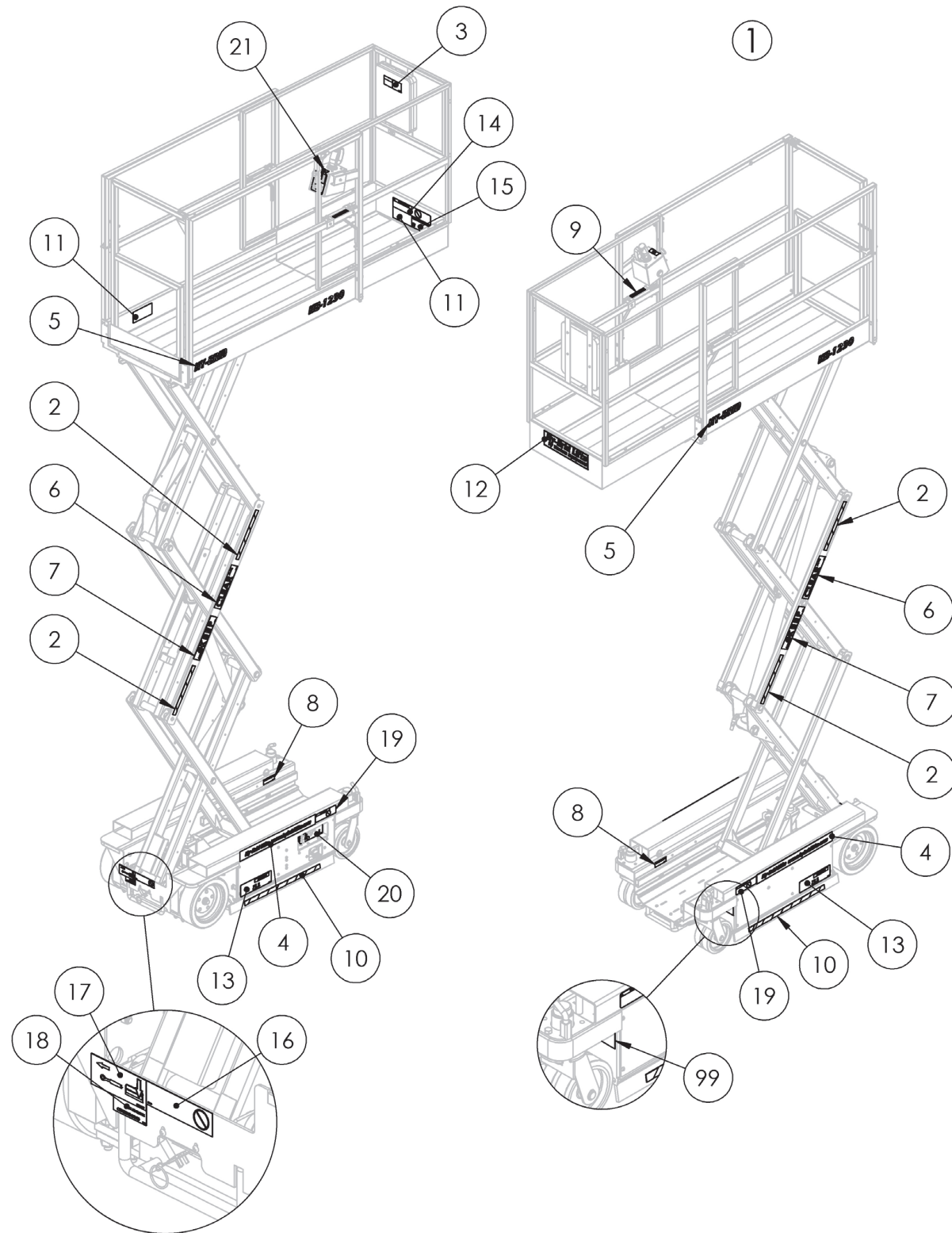
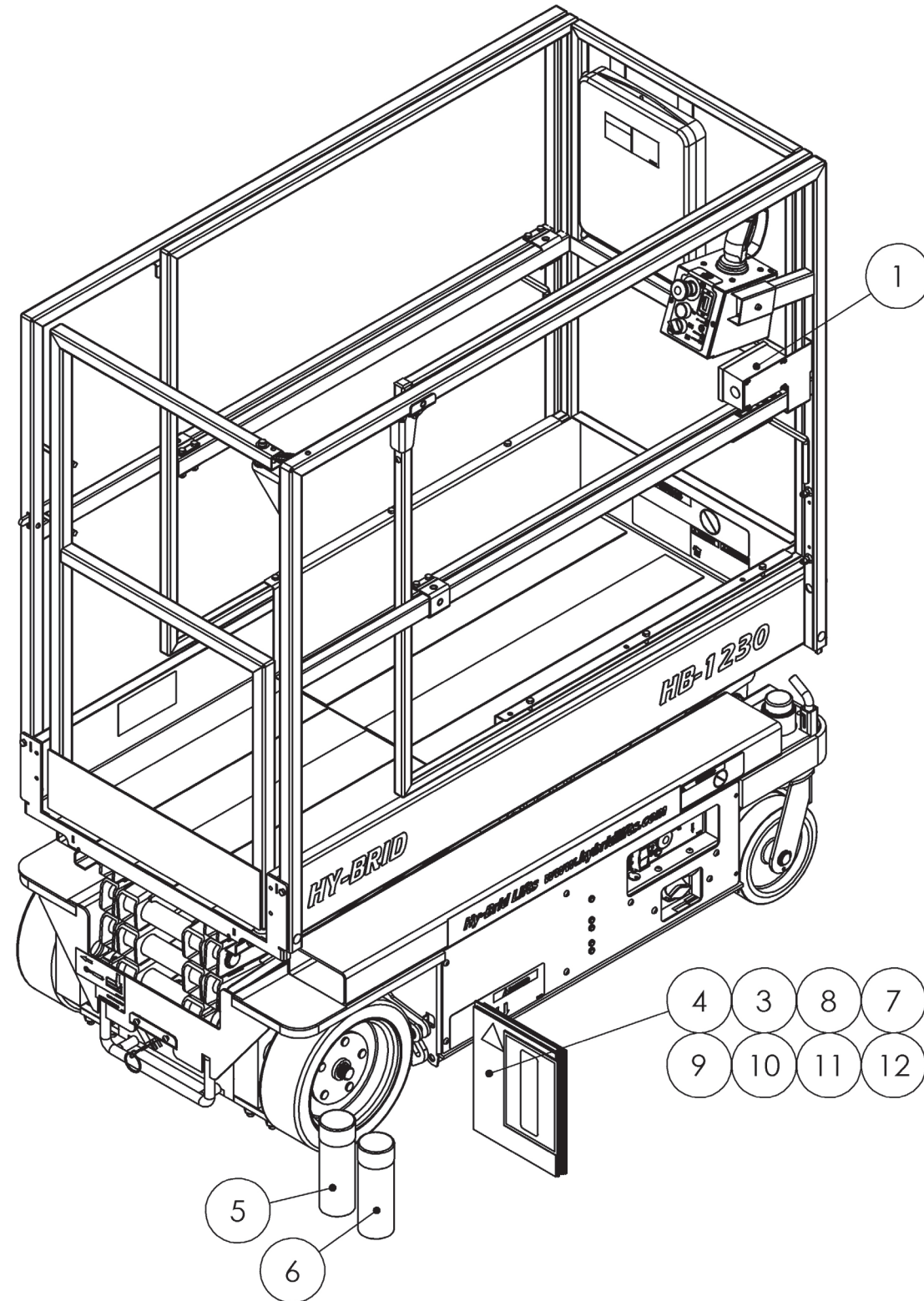


FIGURE 23: Decals

Item #	Part Number	Part Description	Notes	Qty	Superseded By
1	129-21-008-50-K	DECALS,HB-1230 ANSI	KIT	1	
2	DE717-62	DECAL,SAFETY STRIPE (12.00)		4	
3	DE600E-10	DECAL,MANUAL BOX		1	
4	DE652	DECAL,WEBSITE	SEUPERSEDED BY DE822	2	
4	DE822	DECAL,WEBSITE		2	
5	DE603-6	MODEL# DECAL-HB-1230		2	
6	DE708	DECAL,CLEAR		2	
7	DE707	DECAL,KEEP		2	
8	DE600E-14	DECAL,MAINT LOCK		2	
9	DE746	DECAL,LANYARD ATTACHMENT		1	
10	DE717-61	DECAL,SAFETY STRIPE (24.00)		2	
11	DE725	DECAL,CAPACITY,500#,2P,I,W/SO		2	
12	DE821	DECAL,LOGO HY-BRID		1	
13	DE709	DECAL, LWR		2	
14	DE719	DECAL,CASTERLOCK		1	
15	DE706	DECAL,UPR HB		1	
16	DE710	DECAL,BRAKE RELEASE/NO TOW	SUPERSEDED BY DE747	1	
16	DE747	DECAL,BRAKE RELEASE/NO TOW		1	
17	DE600E-29	DECAL,E-DOWN	SUPERSEDED BYDE751	1	
17	DE751	DECAL,E-DOWN		1	
18	DE753	DECAL,CHARGER CORD		1	
19	DE721	DECAL,CASTERLOCK		2	
20	DE704	DECAL,CTL LWR ANSI ZTR-MID		1	
21	DE702	DECAL,CTL UPR ANSI		1	
22	DE619	DECAL,CHARGER CORD	Superseded;	0	DE753
23	DE613	DECAL,LANYARD ATTACHMENT	Superseded;	0	DE746
24	DE601	DECAL,LOGO HY-BRID	Superseded;	0	DE821
99	N/A	SERIAL NUMBER		0	



Item #	Part Number	Part Description	Notes	Qty	Superseded By
1	129-21-319-50-K	ASM,PTP HB1230 S3.1		1	
2	HS-129-20-001-50	HYDR SCH,HB-1230 S1	HYDRAULIC SCHEMATIC	1	
3	MISC-600	MANUAL,AERIAL PF		1	
4	MISC-601	MANUAL,RESPONSIBILITIES A92.6		1	
5	MISC-624	PAINT,WHITE TOUCH-UP SPRAY		1	
6	MISC-625	PAINT,YELLOW TOUCH-UP SPRAY		1	
7	SUPO-645	MANUAL,OP,HB-1230S1		1	
8	SUPO-646	MANUAL,MAINT,HB-1230S1		1	
9	SUPO-674	DOC,HB-1230 UNIQUE FEATURES		1	
10	SUPO-674FRC	DOC,HB-1230 UNIQUE FEATURES,FR	FRENCH (CANADIAN) LANGUAGE	1	
11	SUPO-674SPA	DOC,HB-1230 UNIQUE FEATURES,SP	SPANISH (AMERICAN) LANGUAGE	1	
12	SUPO-683	MANUAL,PARTS HB-1230S1		1	

FIGURE 24: Options & Miscellaneous

HY-BRID LIFTS™

BY CUSTOM EQUIPMENT LLC

Self-Propelled Aerial Work Platform
Parts Manual
HB-1230
Series I

© 2018 Custom Equipment, LLC
2647 Highway 175
Richfield, WI 53076
U.S.A.
Tel.: +1-262-644-1300
Fax: +1-262-644-1320
www.hybridlifts.com
Service@Customequipmentlifts.com

"Hy-Brid Lifts" is a trademark of Custom Equipment, LLC
These machines comply with specified ANSI & CSA requirements

Revision Date: April 2018

Printed In The USA